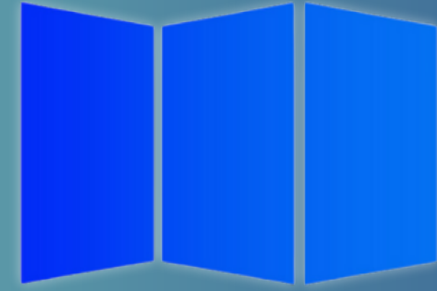


Contact Number: +1 512-522-2284
Email: info@avoradoors.com
Website: www.AvoraDoors.com
Address: Texas Facility
1309 Ave H Grand Prairie, TX 75050

WINDOWS



AVORA DOORS



INFO@AVORADOORS.COM

 ENGLISH

BUILDING SOLUTION RIGHT HERE FOR YOU



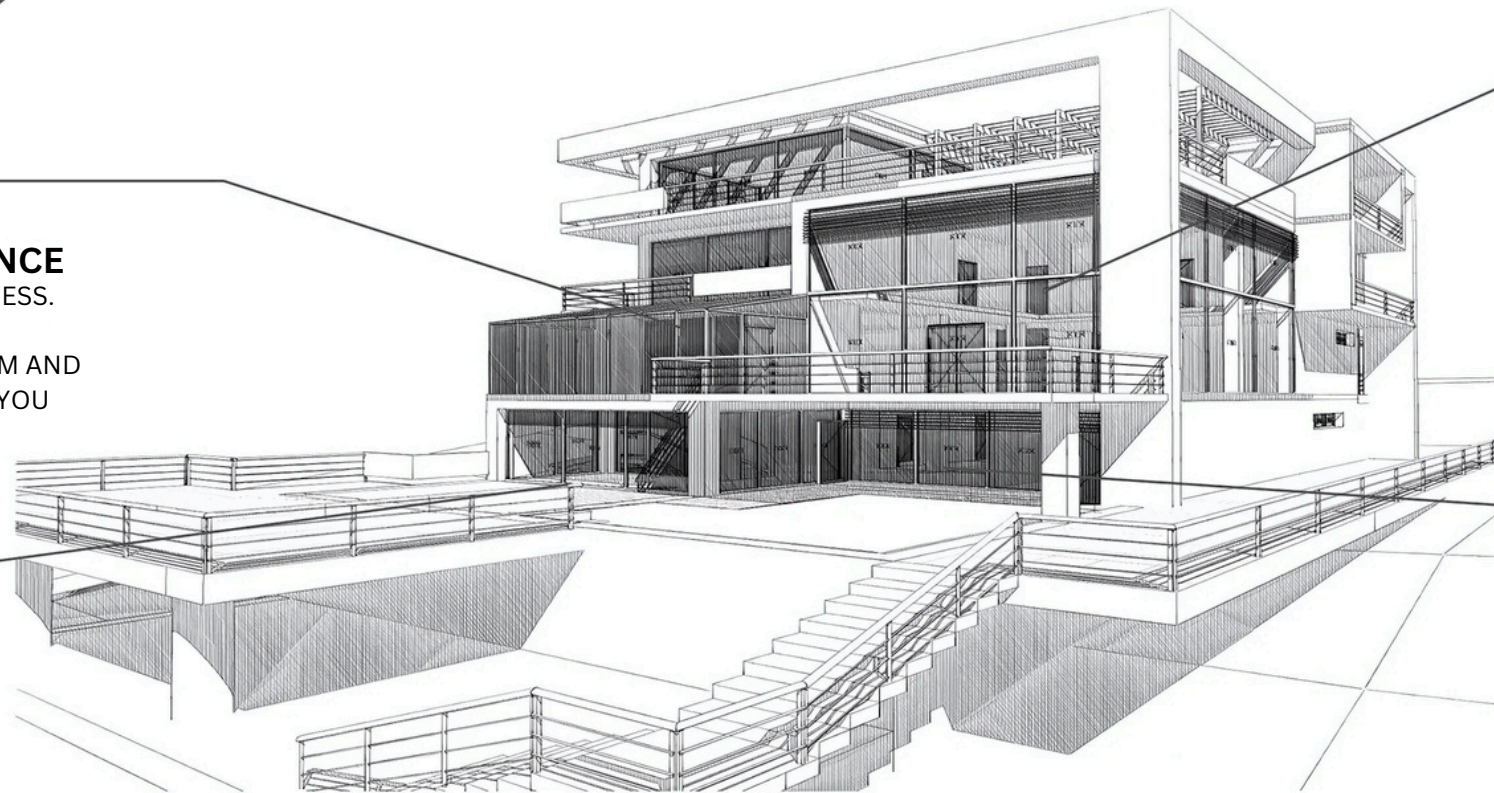
WATERPROOF PERFORMANCE

WATER TIGHTNESS AND AIR TIGHTNESS.
RESIST THE STORM, RAIN,
SAND AND DUST, AND CREATE A WARM AND
COMFORTABLE LIVING SPACE FOR YOU



THERMAL INSULATION PERFORMANCE

MULTI-CAVITY STRUCTURE OF
HEAT-CONDUCTING MATERIAL, WITH GOOD
THERMAL INSULATION PERFORMANCE,
SAVING UP TO 70% OR MORE ENERGY



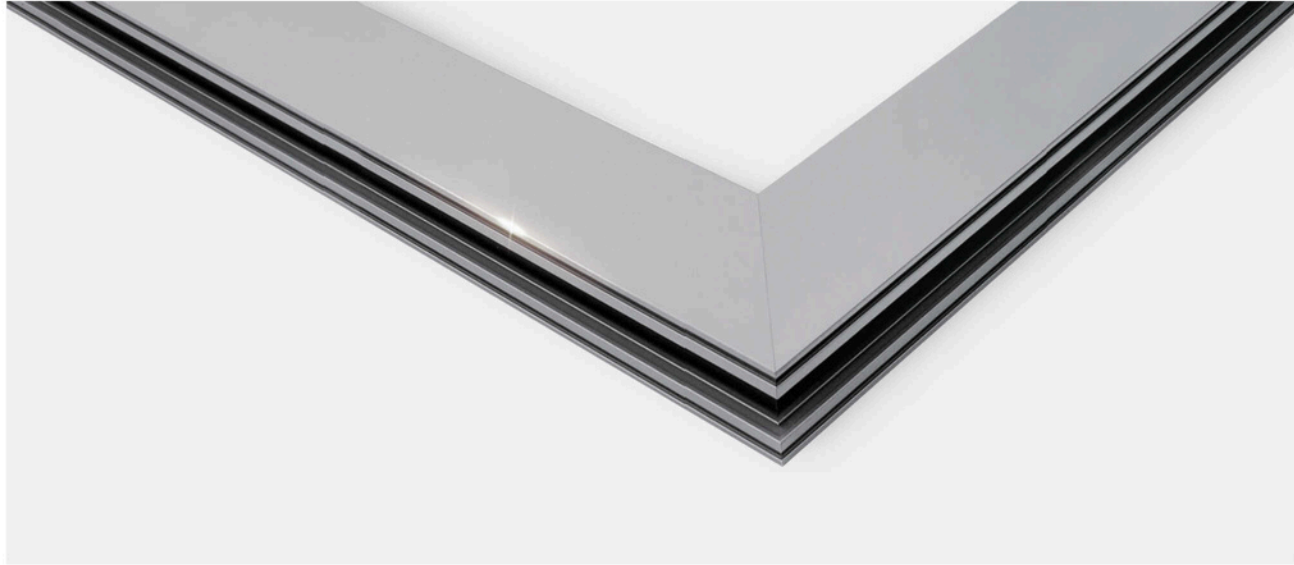
WIND PRESSURE RESISTANCE

WIND PRESSURE RESISTANCE
PERFORMANCE CAN REACH 9 LEVELS,
HIGH-STRENGTH WIND PRESSURE
RESISTANCE PERFORMANCE, CAN EASILY
FACE VARIOUS SEVERE NATURAL
DISASTERS



SOUND INSULATION PERFORMANCE

MULTI-CAVITY STRUCTURE.
MANY COMPRESSION RUBBER SEALS.
THE SOUND INSULATION CAPACITY REACH 36DB.
EVEN IF YOU ARE IN A BUSY CITY,
YOU CAN STILL ENJOY TRANQUILITY AND COMFORT



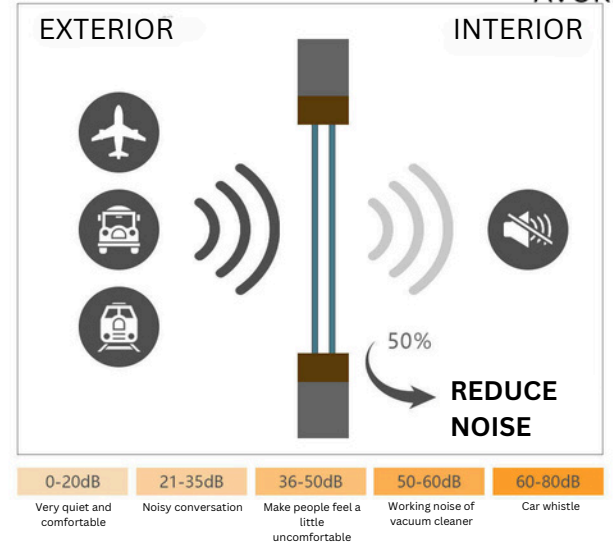
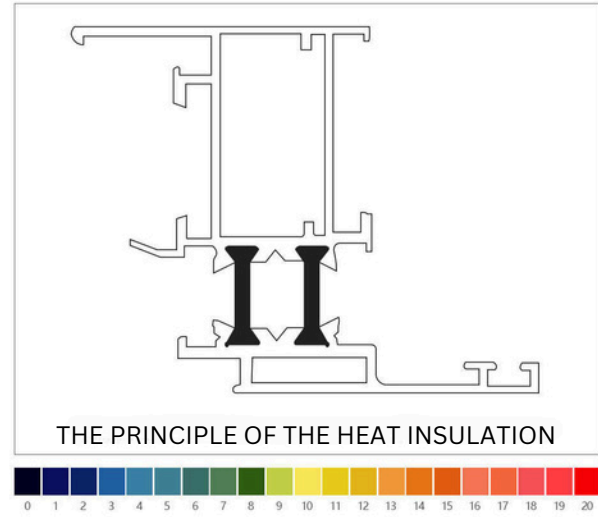
WIND RESISTANCE

WHEN CLOSED, THE FRAME PAN IS ON THE SAME PLANE
IT IS NOT ONLY BEAUTIFUL AND GENEROUS,
BUT ALSO GREATLY ENHANCED AIR TIGHTNESS AND EXCELLENT WINDPROOF PERFORMANCE



THERMAL BREAK SYSTEM

THE ENERGY-SAVING SYSTEM ADOPTS EUROPEAN STANDARD DESIGN, PROFILE
AND HARDWARE, PROFILE AND ACCESSORIES ARE PERFECTLY COMPATIBLE WITH SELF-CONTAINED SYSTEM



TECHNICAL ANALYSIS

Inspection of the dimensional accuracy of the heat insulation strip, follow up with the national standard GB/T236152009.

Detect and analyze the internal structure of the heat insulation strip, according to the national standard GB/T23615.1-2009.and Density test according to GB/T23615.1-2009.Use accurate electronic weighing to detect its density.

The value of the transverse tensile strength of the insulation strip, the impact strength without notch, Applying the national standard GB/T2361512-2009

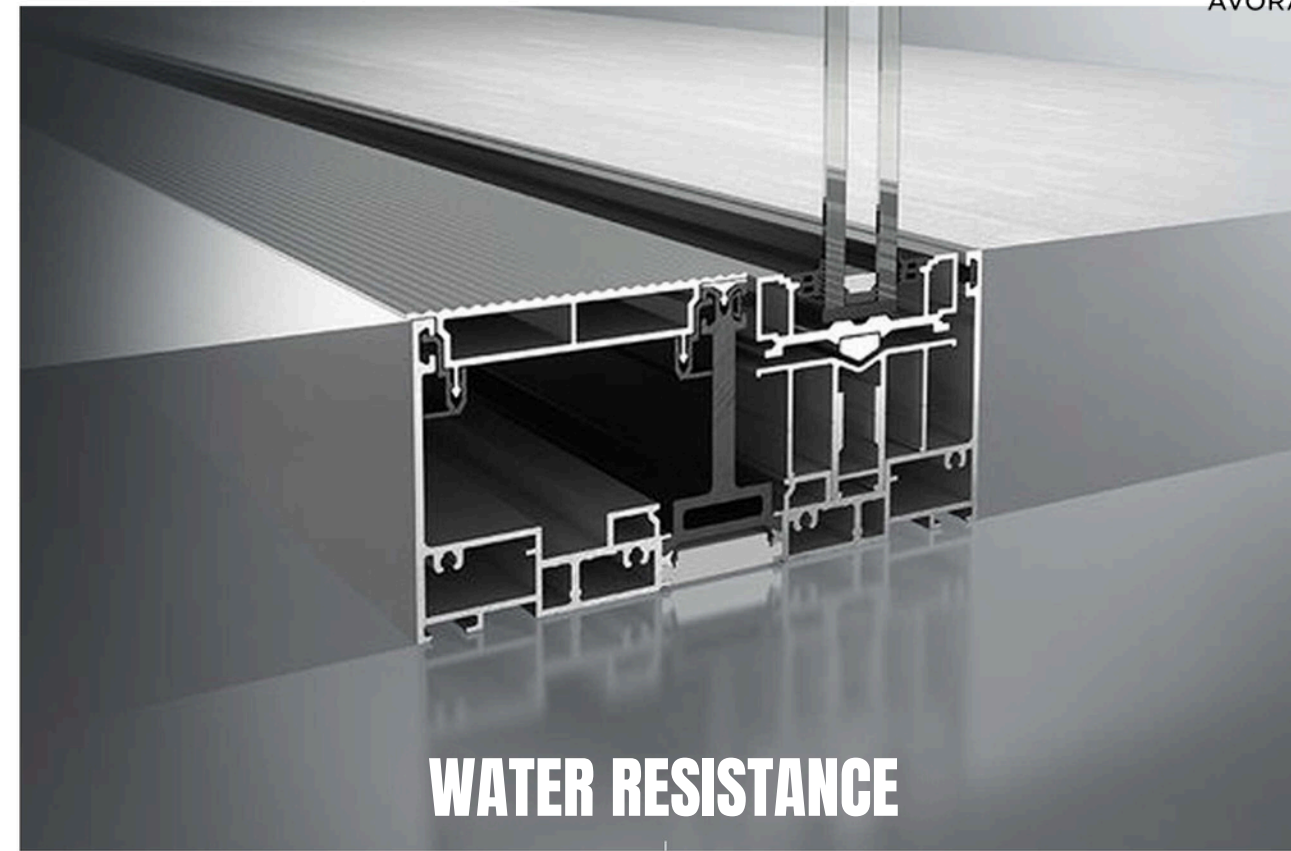


AVORA DOORS

INSULATION STRIP

LEADING DOOR AND WINDOW INSULATION STRIPS EFFECTIVELY BLOCK HEAT CONDUCTION, SO AS TO ACHIEVE THE EFFECT OF HEAT PRESERVATION AND HEAT INSULATION THE RUBBER STRIP HAS GOOD WEATHER RESISTANCE AND CORROSION RESISTANCE, AND THE SEALING RUBBER STRIP EFFECTIVELY BLOCKS THE AIRFLOW OF INDOOR AND OUTDOOR WATER.

PLAYED THE ROLE OF SOUND INSULATION AND WATER BLOCKING
USE THE PRINCIPLE OF PRESSURE BALANCE TO DRAIN WATER THROUGH THE DRAIN HOLE



WATER RESISTANCE

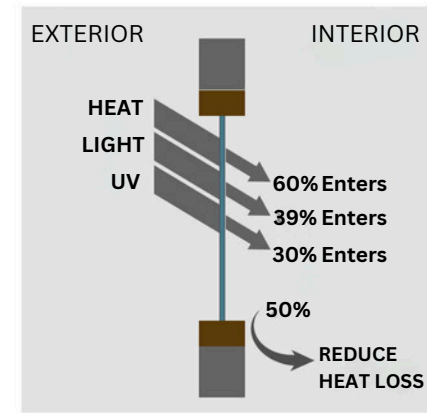
ADOPTING A NEW WINDOW PLATE STRUCTURE, ADDING A DOUBLE DRAINAGE DESIGN FOR THE AUXILIARY FRAME, AND A DRAINAGE PORT ON THE OUTER FRAME SURFACE EFFECTIVELY SOLVE THE PROBLEM OF WIND AND RAIN INVERSION AND AVOID MILDEW ON THE WALL



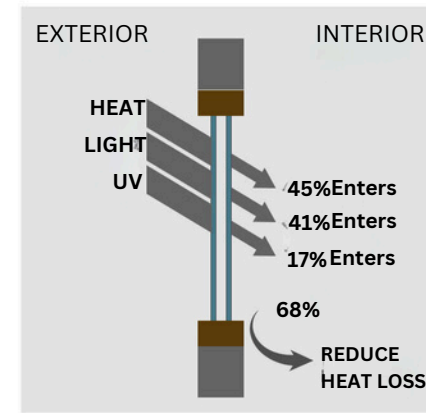
TEMPERED GLASS

ENERGY-SAVING SEALED STRUCTURE TEMPERED HOLLOW GLASS,
WHICH CAN EFFECTIVELY BLOCK
THE CONDUCTION OF HEAT INSULATION, HAS THE EFFECTS OF ENERGY SAVING,
SOUND INSULATION, UV PROTECTION, AND ANTI-CONDENSATION

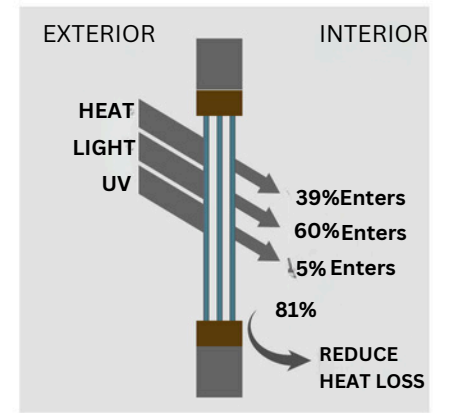
SINGLE GLASS



DOUBLE LAYERED GLASS



TRIPLE GLASS



● **Energy Saving & Environmental Friendly**

Avora Doors system with strong nylon thermal break design, which carps the interior energy saving an environment protecting is superior. its integrated performance of the insulation, temperature control, waterproof etc. is in the leading position in the industry of win and doors system

● **Super Durability**

With unique hardware, the system is perfectly compatible with the profile, with a high degree of eration, The opening times of the windows are 30,000 times, and the doorsare 100, 000 times, The system can ensure that there is no trouble and flexible use for more than 10 years

● **Exclusive Surface Treatment**

The weather resistance is very excellent by using exclusive surface treatment technology The surface finishing has anodizing, powder coating, electrophoresis etc, and rich color and grain to choose, which can meet all kinds of building design needs

● **High Intensity Extrusion Profile**

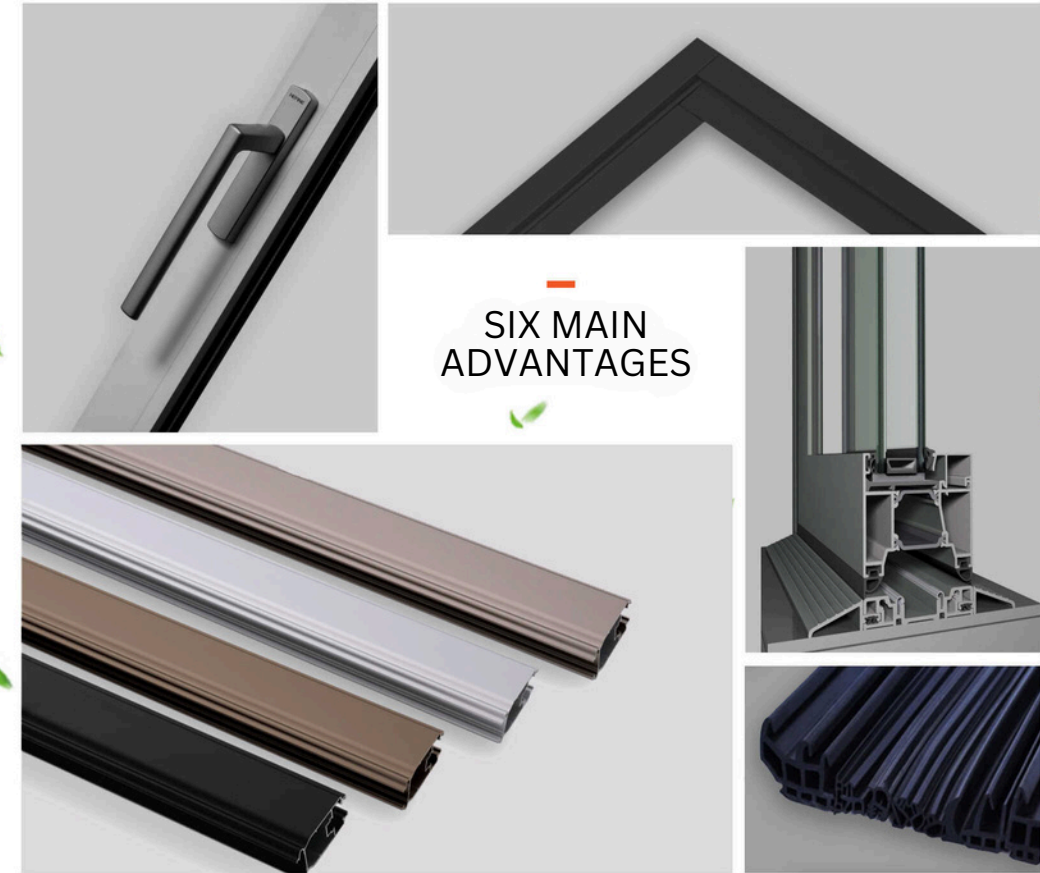
All window frames and sash are cavity structure, and the aluminum thickness is thicker than national standard; All aluminum alloy profiles are aging treatment, and intensity is far stronger than ordinary aluminum window and door

● **Excellent Sealing Performance**

Adopting European standard ternary propylene sealant, automobile grade sealant, anti-aging for more than 10 years; For uniform composition and stable sealing performance, to ensure door and window air tightness, water tightness and sound insulation energy work efficiently

● **Flexible Application Selections**

The same door and window profile section is used to apply different series of changes by changing the width of the middle insulation bar, so as to reduce the inventory pressure, It possess good ventilation, screen window, shading configure





**MAIN
PRODUCTS**



GLASS PARTITION

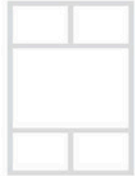
FRAME DESIGNS



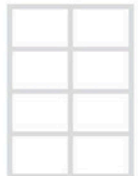
SOLO



TRIO



DUO-T



CONTINENTAL



PENTAGON



QUATTRO

- Visible frame size area available: 16mm, 18mm, 25mm, 32mm.
- Lightweight and requires only 3 pounds of pressure to slide open or close.
- Standard sizes include 610mm, 762mm, 914mm, 1016mm, wide and 2032mm, 2134mm, 2438mm high. Custom sizes available.
- Dust prevention strips come standard.
- Optional divider strips add style and flexibility.
- Sound reduction strips are optional with various solutions.



AVORA DOORS



AVORA DOORS



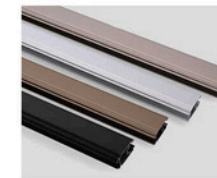
SINGLE/DOUBLE HUNG WINDOW

Performance

Single/Double Hung window system	Heat preservation performance(m ² K)	Sound insulation performance(dB)	Watertight performance(Pa)	Airtight performance	Wind resistance (KPA)
UXC128	2.5 1P×5	30 1P×3	290	0.55 L/s-m ²	2880 Pa

Parameters

Single/Double Hung window system	Visible surface(mm)	Section profile width (mm)	Build in glass thickness(mm)
UXC128	Frame 63 Sash 45	Frame 55 Sash 40.8	16-27



- Be suitable for both residential and commercial project
- Tilt-wash design makes it easy to clean
- Widely using in renovation project in the US and the UK. Can keep the original architectural style



CASEMENT OUTSIDE WINDOW

Performance

Casement outside Window	Heat preservation performance(m ² K)	Sound insulation performance(dB)	Watertight performance(Pa)	Airtight performance	Wind resistance (KPA)
60 Series	2.7 1P×5	30 1P×3	700 1P×6	1P×7	4.3 1×7
70 Series	2.5 1P×5	35 1P×4	700 1P×6	1P×7	4.8 1×8

Parameters

Casement outside Window	Visible surface(mm)	Section profile width (mm)	Build in glass thickness(mm)
60 Series	Frame 36 Sash 85	Frame 60 Sash 69	24-28
70 Series	Frame 36 Sash 85	Frame 69 Sash 78	24-28



- Adopting the European standard design, effectively improving the sound insulation effect and the overall insulation performance, and preventing indoor and outdoor thermal energy transmission, energy saving, environmental protection, and comfort.
- Adopting a complex three frames design, strong rigidity, with the independent drainage system, which makes the window drainage smooth, and it does not have the rain water pouring.
- Choosing high quality aluminum alloy and advanced surface treatment, the whole window structure is stronger, more durable, beautiful and fashionable.
- By fitting different accessories can be applied to single tilt inside, single turn inside, or tilt and turn in a variety of open ways.
- The rich configuration can install perfect ventilation, screen, and shading.



AVORA DOORS



AVORA DOORS



SLIDING WINDOW

Performance

Sliding Window system	Heat preservation performance(m ² K)	Sound insulation performance(dB)	Watertight performance(Pa)	Airtight performance	Wind resistance (KPA)
60 Series	3.3 1P×4	27 1P×2	650 1P×5	1P×5	3.0 1×5

Parameters

Sliding Window system	Visible surface(mm)	Section profile width (mm)	Build in glass thickness(mm)
60 Series	Frame 52 Sash 69	70 Hook 34 Frame 128 Sash 69	21-22



- Adopting European standards, Our system has a great performance in sound insulation and heat insulation, which means energy-saving, environmental protection and comfort.
- Triple-cavity, strong rigidity, is a special drainage process to make the drainage smooth, with no rain backflow.
- All rubber seals are indoor, matching the multi-point lock which are firm and good security.
- High quality aluminum alloy profiles and advanced finishing make it solid, durable, modern and fashionable.
- Stainless steel track with screens could compose the series 60/70 casement windows.



TILT AND TURN WINDOW

Performance

Tilt and Turn window	Heat preservation performance(m ² K)	Sound insulation performance(dB)	Watertight performance(Pa)	Airtight performance	Wind resistance (KPA)
128 Series	2.3 1P×6	32 1P×3	700 1P×6	1P×8	4.3 1×7
138 Series	2.3 1P×6	35 1P×4	700 1P×6	1P×8	4.7 1×7

Parameters

Tilt and Turn window	Visible surface(mm)	Section profile width (mm)	Build in glass thickness(mm)
128 Series	Frame 42 Sash 70	Frame 128 Sash 69	24-28
138 Series	Frame 42 Sash 70	Frame 136 Sash 78	24-35



- Adopting the European standard design, effectively improving the sound insulation effect and the overall insulation performance, and preventing indoor and outdoor thermal energy transmission, energy saving, environmental protection, and comfort.
- Adopting a complex three frames design, strong rigidity, with the independent drainage system, which makes the window drainage smooth, and it does not have the rain water pouring.
- Choosing high quality aluminum alloy and advanced surface treatment, the whole window structure is stronger, more durable, beautiful and fashionable.
- By fitting different accessories can be applied to single tilt inside, single turn inside, or tilt and turn in a variety of open ways.



AVORA DOORS





BI-FOLD WINDOW

Performance

Folding window system	Heat preservation performance(m*K)	Sound insulation performance(dB)	Watertight performance(Pa)	Airtight performance	Wind resistance (KPA)
50 Series	1.5 1P×8	30 1P×3	350 1P×6	1P×7	3.0 1×5

Parameters

Folding window system	Visible surface(mm)	Section profile width (mm)	Build in glass thickness(mm)
50 Series	Upper rail 40 Frame 194 Bottom rail 36 Sash 52	Frame 34 Sash 94	19-24



- Bi-fold windows mainly applied to shopping centers, office buildings, exhibit halls, and houses.
- Bi-fold window is elegant in appearance, novel in style, various in colors and easy to use.
- Bi-folds are a popular and versatile window. They have wide openings to maximize views and airflow, and these stylish windows show an expansive feeling to the house.





BI-FOLD WINDOW

Performance

Folding window system	Heat preservation performance(m ² K)	Sound insulation performance(dB)	Watertight performance(Pa)	Airtight performance	Wind resistance (KPA)
50 Series	1.5 1P×8	30 1P×3	350 1P×6	1P×7	3.0 1×5

Parameters

Folding window system	Visible surface(mm)	Section profile width (mm)	Build in glass thickness(mm)
50 Series	Upper rail 40 Frame 194 Bottom rail 36 Sash 52	Frame 34 Sash 94	19-24



- Bi-fold windows mainly applied to shopping centers, office buildings, exhibit halls, and houses.
- Bi-fold window is elegant in appearance, novel in style, various in colors and easy to use.
- Bi-folds are a popular and versatile window. They have wide openings to maximize views and airflow, and these stylish windows show an expansive feeling to the house.



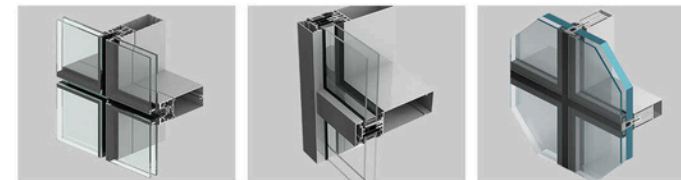
AVORA DOORS



CURTAIN WALL

Parameters

Curtain wall System	Spec	Color	Thickness	Installation
Glass curtain wall	Double glass Triple glass Single glass Laminated glass	Clear Tinted Reflective	5mm-42mm	Embedded Hang out



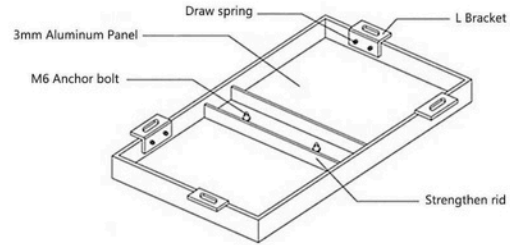
- With Avora Doors facade solutions you can create that unique signature design for your façade and add an enhanced sense of character to any building.
- Are available in different energy levels, from non-insulated to super high insulating or suitable for passive construction.
- Avora Doors has an expert team ready to provide tailored, on-demand product solutions to help realize any project, no matter its size, scope or complexity.
- Provide one-step service, from designing, supplying to installing



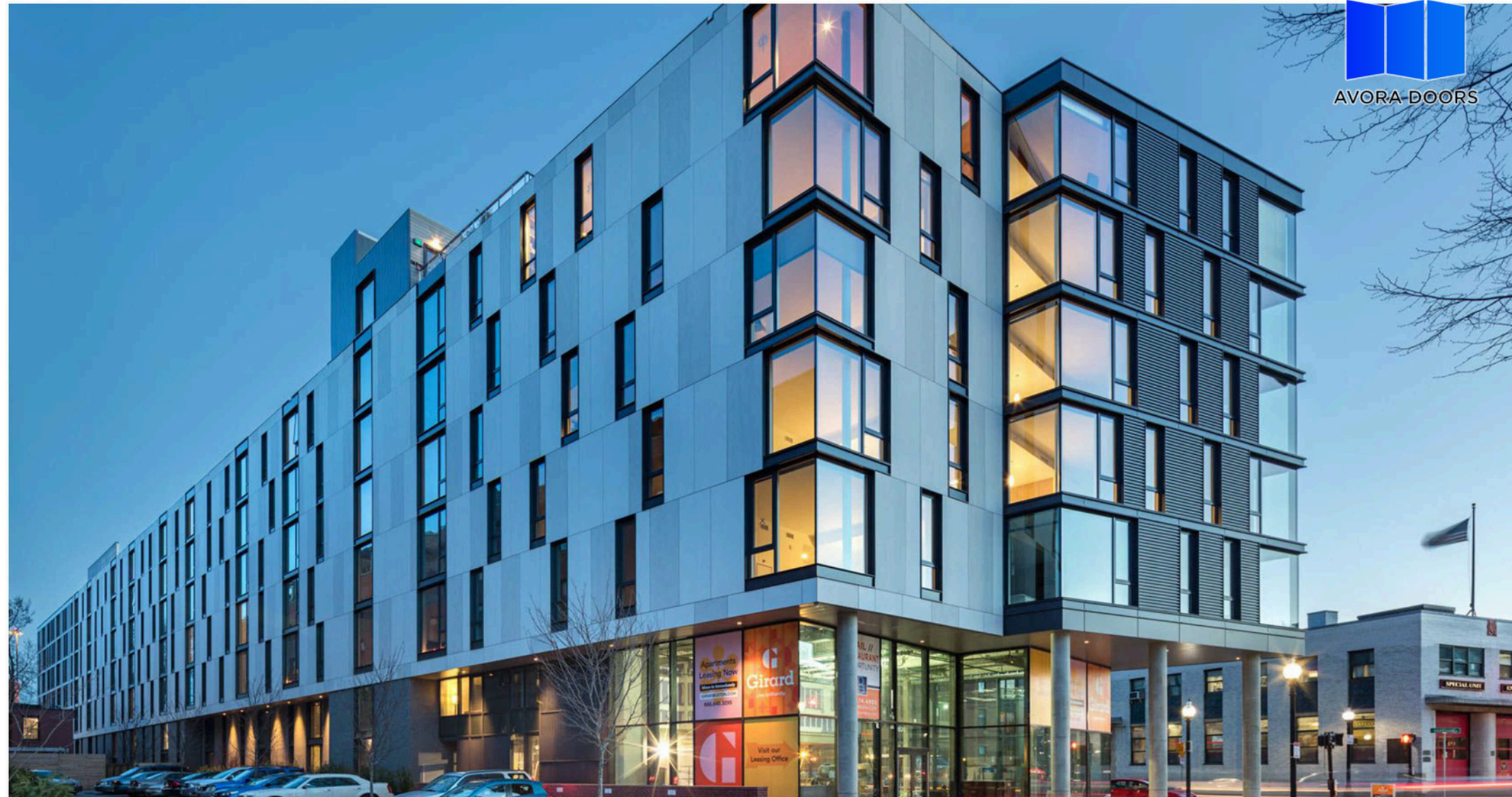
ALUMINUM CURTAIN WALL

Parameters

Aluminum Panel System	Surface Finishing	Thickness (mm)	Aluminum panel
Aluminum Panel	Powder Coating PVDF Anodized	1.0-3.0	Aluminum Panel or Aluminum Composite Panel



- Aluminum panels are a durable and excellent material for innovative solutions.
- They require very little maintenance and do not rust.
- They are available in a wide variety of colors, shapes, and sizes.
- They are versatile enough to create the most striking and creative designs.





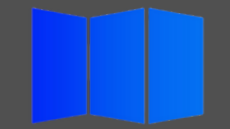
AVORA DOORS

- LARGE PROJECT
- SMALL PROJECT

CASE DISTRIBUTION

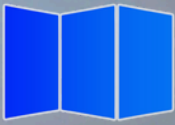


-ENGINEERING CASE-



AVORA DOORS

-COMMERCIAL-



AVORA DOORS



PRODUCT PARAMETER

Product Name: Sliding Window
Product Color: Black
Glass Specification: Tempered Glass



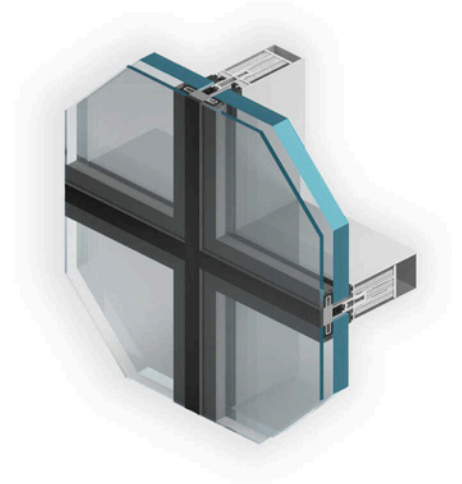
- Year: 2018
- Quantity: 1300 sqm
- Product: Window&Door
- Project: Football Club
- Location: Angola
- Client: Architect



YEAR	QUANTITY'	PRODUCT	LOCATION	CLIENT	PROJECT
2018	350 SQM	WINDOW&DOOR	TRINIDAD AND TOBAGO	CONTRACTOR	SCHOOL PROJECT



- **Year:** 2017
- **Quantity:** 700 sqm
- **Product:** Curtain Wall
- **Project:** Hospital Project
- **Location:** Kansas, US
- **Client:** Owner



PRODUCT PARAMETER	Product Name: Curtain Wall Product Color: Double Silver Low-e Glass Specification: Silicone Sealant
-------------------	---



YEAR	QUANTITY	PRODUCT	LOCATION	CLIENT	PROJECT
2020	837 SQM	CURTAIN WALL	KINSTON, JAMAICA	TRADING COMPANY	GOVERNMENT BUILDING



AVORA DOORS



AVORA DOORS



Year: 2019

Quantity: 950sqm

Product: Window&Door

Project: Resort Project

Location: Panama

Client: Developer



YEAR	QUANTITY	PRODUCT	LOCATION	CLIENT	PROJECT
2020	7000 SQM	WINDOW&DOOR	URUGUAY	CONTRACTOR	PPP2 PROJECT



AVORA DOORS



AVORA DOORS



YEAR	QUANTITY	PRODUCT	LOCATION	CLIENT	PROJECT
2020	7000 SQM	WINDOW&DOOR	URUGUAY	CONTRACTOR	RESORT PROJECT



AVORA DOORS



YEAR	QUANTITY	PRODUCT	LOCATION	CLIENT	PROJECT
2017	1200 SQM	CURTAIN WALL	CAMEROON	OWNER	COMMERCIAL BUILDING

-RESIDENTIAL-



AVORA DOORS

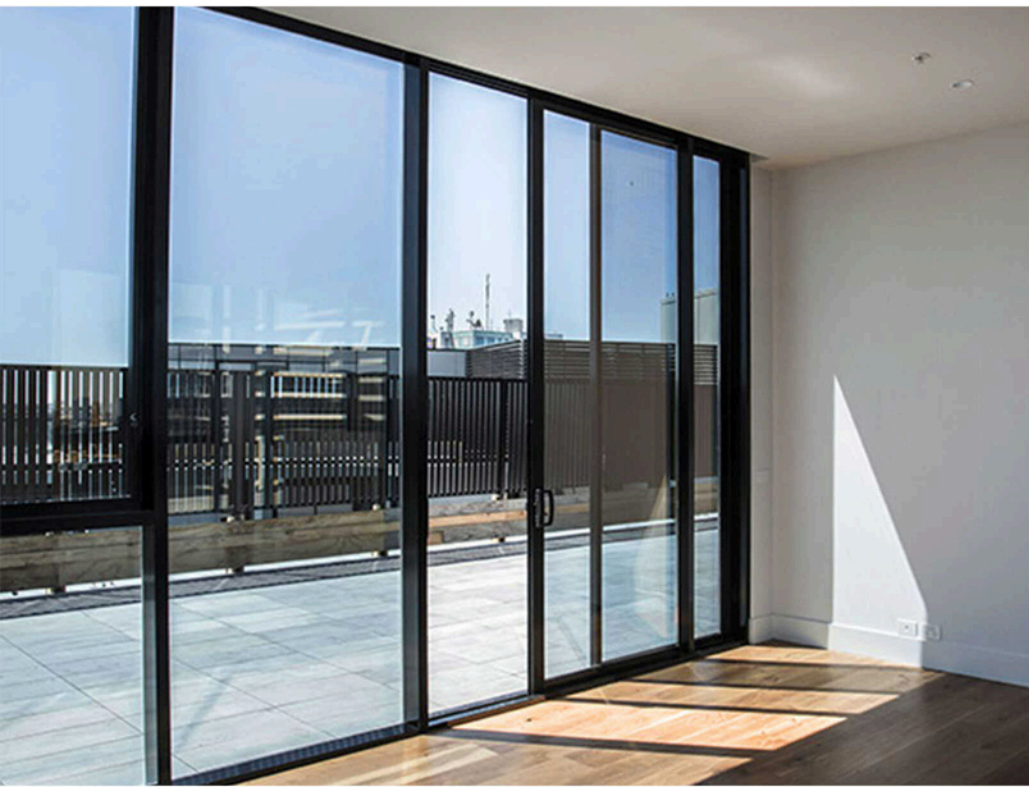




AVORA DOORS



YEAR	QUANTITY	PRODUCT	LOCATION	CLIENT
2020	83 SQM	WINDOW&DOOR	THE US	OWNER



YEAR	QUANTITY	PRODUCT	LOCATION	CLIENT
2019	750 SQM	WINDOW&DOOR	MELBOURNE	DEVELOPER





AVORA DOORS

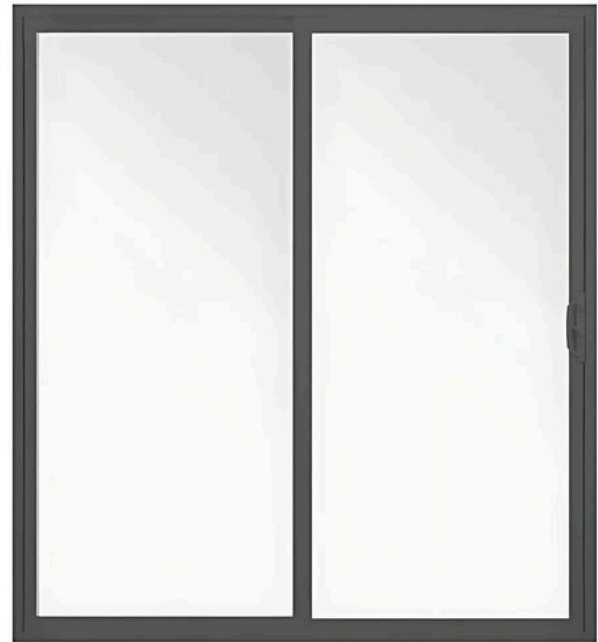


YEAR	QUANTITY	PRODUCT	LOCATION	CLIENT
2019	120 SQM	WINDOW&DOOR	AUSTRALIA	OWNER



AVORA DOORS

- Year: 2017
- Quantity: 850 sqm
- Product: Window&Door
- Location: Peru
- Client: Contractor



PRODUCT PARAMETER

Product Name: Sliding Door
Product Color: Black
Glass Specification: Double Layer





AVORA DOORS



YEAR	QUANTITY	PRODUCT	LOCATION	CLIENT
2018	260 SQM	WINDOW&DOOR	NIGERIA	ARCHITECT



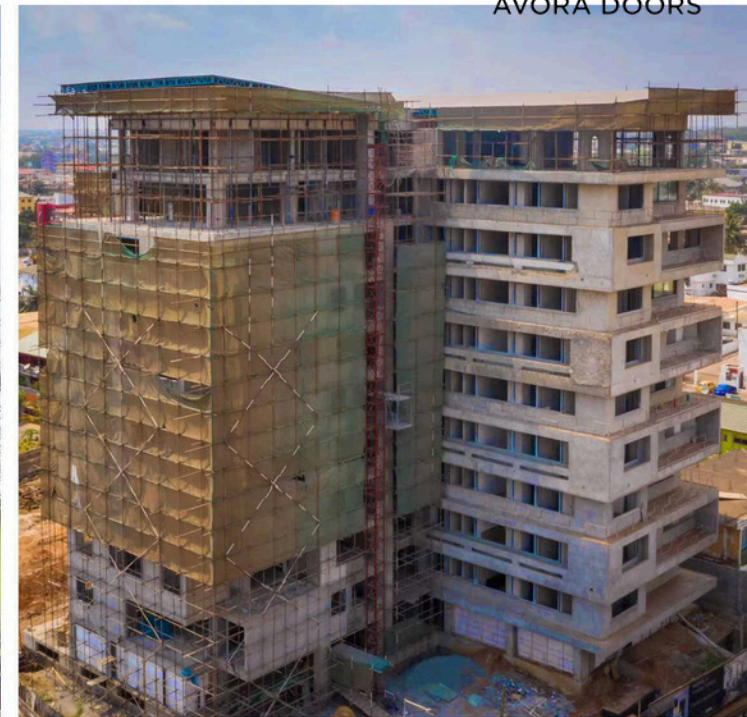
YEAR	QUANTITY	PRODUCT	LOCATION	CLIENT
2016	600 SQM	WINDOW&DOOR, HANDRAIL	SYDNEY	DEVELOPER



AVORA DOORS

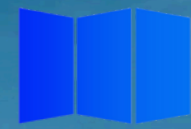


AVORA DOORS



YEAR	QUANTITY	PRODUCT	LOCATION	CLIENT
2018	1000 SQM	WINDOW&DOOR	GHANA	CONTRACTOR

- Year: 2017
- Quantity: 460 sqm
- Product: Window&Door
- Location: Ghana
- Client: Owner



AVORA DOORS



PROFESSIONAL SERVICE

EXPERIENCE EXCEPTIONAL SERVICE AT EVERY STAGE: PRE-SALE, DURING THE SALE, AND POST-SALE. HERE, YOU CAN ENJOY YOUR RIGHTS AND RECEIVE COMPREHENSIVE SUPPORT. WE'RE HERE TO GUIDE YOU, ANSWER YOUR QUESTIONS, AND EMPOWER YOU WITH THE KNOWLEDGE NEEDED TO MAKE INFORMED CHOICES. FEEL FREE TO REACH OUT - WE LOOK FORWARD TO HELPING YOU FIND THE PERFECT PRODUCT!



AVORA DOORS



PRE-SALE



UNDERSTAND BUYER NEEDS



PROVIDE PROFESSIONAL KNOWLEDGE ANSWERS



DESIGN SOLUTION



VISIT THE FACTORY



VISIT THE EXHIBITION HALL



GUIDE TO CHOOSE PRODUCTS



ON SALE



AFTER-SALE



CUSTOMER CONFIRMS THE ORDER



INSTALLATION GUIDE



GET THE WARRANTY



AVORA DOORS



“ TAKE EVERY CUSTOMER SERIOUSLY ”

