

AVORA DOORS

# IMPACT WINDOW AND DOOR SYSTEM

ALUMINUM SLIDING DOOR



**Contact Number:** +1 512-522-2284

**Email:** [info@avoradoors.com](mailto:info@avoradoors.com)

**Website:** [www.AvaraDoors.com](http://www.AvaraDoors.com)

**Address:** Texas Facility 1309 Ave H Grand  
Prairie, TX 75050

# ALUMINUM SLIDING DOORS



With the ever increasing demand for modern, bright, open plan spaces within new and existing homes, the ability to allow natural light to flood in has never been more crucial. Aluminum sliding doors are the ultimate solution to fill your space with natural light, due to their ability to support very large panes of glass and offer comparatively slim frame profiles, maximising the area in which light can enter.

## WHY ALUMINUM?

Aluminum is far superior to UPVC and timber in terms of strength, which allows it to support larger openings both horizontally and vertically, larger panes of glass, and offer a slimmer profile maximising the light. With all of the advantages of this technology, you can create the ultimate uninterrupted view of your surroundings to achieve the wow factor within your home.

## HURRICANE RATED DOOR

Hurricane season brings challenges that put your home or business to the test. Nowhere is this more evident than when it comes to windows and doors. If you can't trust your glass walls to stand up to intense winds and howling rains, there's no point in installing them. Choosing the right sliding glass door system can mean the difference between the elements entering your building and its contents being protected from Mother Nature.

# IMPACT RESISTANCE

Florida's building codes are among the most thorough and rigorous in the nation for a reason. Strict standards like TAS 201, TAS 202, and TAS 203 were developed from real-world experiences, reflecting the immense damage caused by decades of storms. A compromised sliding glass wall system or hurricane window at the start of a storm can lead to devastation far beyond the immediate area. These codes and guidelines are designed to safeguard your property and ensure you're prepared for the inevitable arrival of a hurricane.

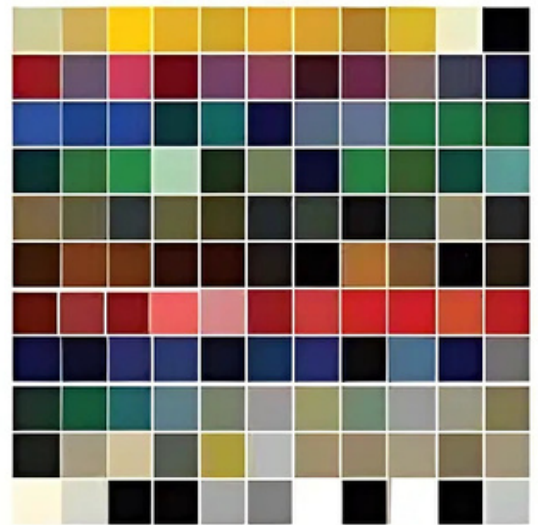
Ensuring your impact-resistant sliding glass door meets Florida and U.S. building codes is critical, particularly for wind-borne debris areas outside high-velocity hurricane zones. With regulations updated every three years to reflect evolving weather patterns and field research, non-compliant glass wall systems and hurricane windows could expose you, your family, and your home to unnecessary risks.



# RAL COLOURS

Our aluminum windows and doors are finished with a durable, polyester powder-coated surface. All sliding doors in our range are available in a variety of standard colors, with custom colors offered for an additional cost.

We use the RAL color system, a widely recognized standard developed in Germany, to ensure precise color matching. This system allows us to provide a wide range of products from different suppliers while maintaining consistent color accuracy. With over 200 color options available, you'll have maximum flexibility to achieve a cohesive look throughout your project.



# IMPACT SLIDE



To effectively protect your home or business from everything a hurricane can bring—large debris, tropical storms, high winds, Category 5 hurricanes, and driving rain—your sliding glass doors must be engineered for maximum durability. Ideally, these doors should feature oversized panels that lock into thicker aluminum components, with optional wood cladding for added strength and aesthetic appeal. This design provides the stability needed to withstand extreme hurricane conditions.

Glass wall systems that don't align perfectly are more prone to wear and tear over time, increasing the risk of failure when you need them most. That's why hurricane windows and doors made with impact-resistant glass must be precisely built and expertly assembled. If you're searching for top-tier hurricane impact windows, Avora Doors is here to help safeguard your investment.

## KEY FEATURES

- 2, 3, and 4 door panels available. - Max door panel: 1235mm (48 5/8 inch)  
Max frame height: 2743mm (108 inch)
- Weight Limit 240Kg
- Profile width: Head, sill and jamb 50mm,

- Mullion 45mm
- FL Code: FL30906, FL41360  
NOA: 230119-02

- Depth of Frame: Two track 100mm  
Three track 150mm
- Glazing options: 9/16 inch impact glass  
1 1/16 inch impact glass
- Design load: Option 1 - +65psf / -65 psf  
Option 2 - +90psf / -110psf
- Complies with FPA, NOA, NFRC



Dual track, dual panel



Dual track, triple panel



Dual track, four panel



Triple track, triple panel



## CONFIGURATIONS

Our Impact Slide sliding door is available in a wide range of designs including double and triple track configurations for ultimate flexibility.

## DOOR HANDLES

Choose from a variety of handle options to customize your Avora Doors sliding door to match your style.

- Flush Pull Bar Handle: Sleek and minimalistic.
- D Handle: A popular standard option included with the door.
- Big Handle: Available as an optional upgrade for added style and functionality.



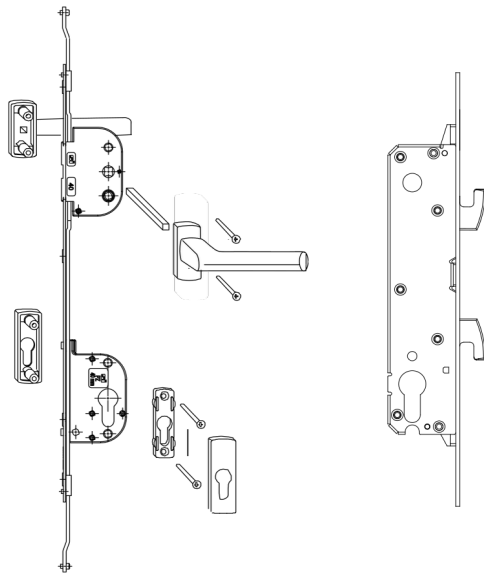
D handle



Flush pull handle



Big handle



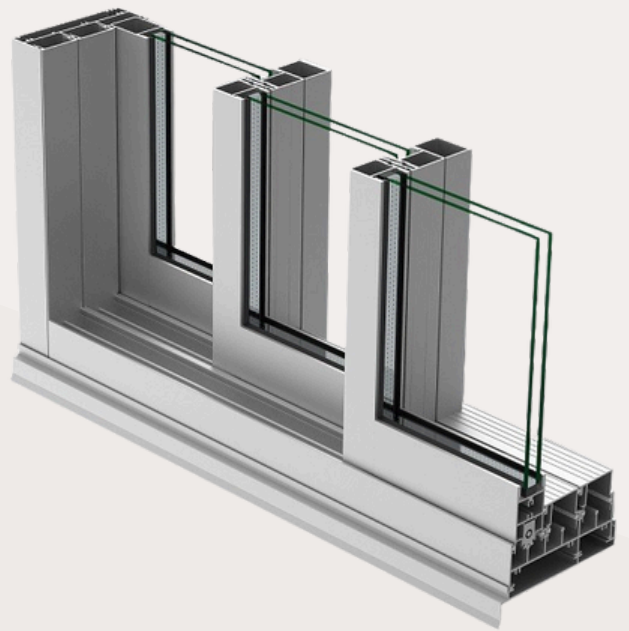
Three or four point lock

Dual point lock

## MULTI-POINT LOCK

Different from the average manufacturers who only use single point locks, Avora Doors impact sliding door only have the enhanced security multi-point lock system.

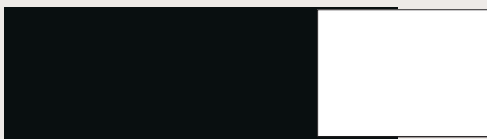
The additional points of contact greatly improve security and safety for your home and your family



## SPECIFICATION

- Wind Resistance : ASTM330 5280pa
- Water Tightness : ASTM331 648pa -
- Air Permability : ASTM283 300pa -
- Reinforce Mullion Frame
- Depth:112mm
- Regular Door Frame Depth 40mm

### Standard colours



Black

White

### RAL Colours



## COLOUR & FINISHES

Our Supe Slide door has a standard range of 2 most popular colours.

On top of our standard colour range we also have a huge range of over 200 custom RAL colours enabling you to match these doors with products from our other range seamlessly.



# AVORA DOORS

**Contact Number: +1 512-522-2284**

**[www.AvoraDoors.com](http://www.AvoraDoors.com)**

**[info@avoradoors.com](mailto:info@avoradoors.com)**

**Address: Texas Facility 1309 Ave H Grand Prairie, TX 75050**