

AVORA DOORS

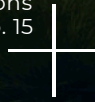


**THERMO STEEL  
EXTERIOR  
DOORS**

**SMART LOCK**  
ACCESS CONTROL SAFE  
HOME



**ILLUMINATING** check options  
/ p. 15



exterior view

Model M.2 / Anthracite / OPTIMUM ENERGY package, square door pull + SOLO SOLID handle 400 mm sidelight

LOOKING FOR THE DOOR OF YOUR DREAMS FOR YOUR HOME?

## **SEE WHY CHOOSING A THERMO DOOR IS THE BEST OPTION**

### **QUALITY**

confirmed by the market leader, backed by 30 years of experience in door manufacturing

### **SECURITY**

manufacturer's care for up to 5 years with the THERMO authorized installation.

### **ENERGY EFFICIENCY**

innovative **Solid Therm** technology ensuring durable construction and highest thermal insulation

each model available in 4 energy-saving sets, choose the one that meet your needs

### **RECOMMENDED BY INSTALLERS**

the THERMO door installation system was developed in cooperation with installers from the Academy of Good Assembly. ask your dealer for a quotation for door installation.

THE COLLECTION  
**MODERN**

**BASIC PRICE FOR THE MODEL INCLUDES: THE DOOR** (leaf width '90' / '100' + frame with threshold) equipped with a multipoint lock with hooks, adjustable strike plates, dog bolts and adjustable 3D hinges with caps  
**ACCESSORIES IN SILVER (Inox)** (handle with upper escutcheon, set of class B cylinders)

AVAILABLE OPENING METHODS



handle + handle



handle + door pull



handle + knob



access control, SMART lock in OPTIMUM ENERGY and PREMIUM ENERGY sets



**MODEL M.1**

Anthracite

**PREMIUM ENERGY**

**OPTIMUM ENERGY**

**OPTIMUM**

**STANDARD**

See page 10-11



**MODEL M.2** Anthracite, one-sided panel

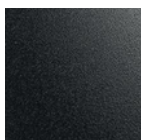


**MODEL M.3** Anthracite, one-sided panel

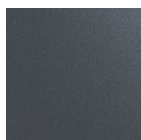


**MODEL M.4** Anthracite, double-sided panel

**ALL MODELS AVAILABLE IN COLORS**



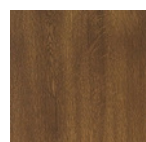
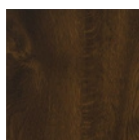
Black



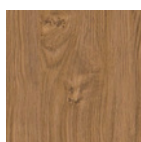
Anthracite



Anthracite Synchro Walnut Structure



Golden Oak



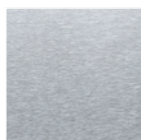
Winchester Oak



Woodec Turner Oak \*

\*Woodec Turner Oak not available in the STANDARD package.

**ACCESSORIES AND DETAILS IN COLORS**



Inox



Brushed Black (extra charge)

---

THE COLLECTION

LINE

**BASIC PRICE FOR THE MODEL INCLUDES: THE DOOR** (leaf width '90' / '100' + frame with threshold) equipped with a multipoint lock with hooks, adjustable strike plates, dog bolts and adjustable 3D hinges with caps  
**ACCESSORIES IN SILVER (Inox)** (handle with upper escutcheon, set of class B cylinders)

---

AVAILABLE OPENING METHODS



handle + handle



handle + door pull



handle + knob



access control, SMART lock in OPTIMUM ENERGY and PREMIUM ENERGY sets



**MODEL L.1** Walnut, double-sided embossing

**PREMIUM ENERGY**

**OPTIMUM ENERGY**

**OPTIMUM**

**STANDARD**

See page 10-11



**MODEL L.2** Walnut, double-sided embossing



**MODEL L.3** Walnut, double-sided embossing



**MODEL L.4** Walnut, double-sided decorative inlay

**ALL MODELS AVAILABLE IN COLORS**



\*Woodec Turner Oak not available in the STANDARD package.

**ACCESSORIES AND DETAILS IN COLORS**



---

THE COLLECTION

# GLASS



**BASIC PRICE FOR THE MODEL INCLUDES: THE DOOR** (leaf width '90' / '100' + frame with threshold) equipped with a multipoint lock with hooks, adjustable strike plates, dog bolts and adjustable 3D hinges with caps  
**ACCESSORIES IN SILVER (Inox)** (handle with upper escutcheon, set of class B cylinders)

**MODEL G.1** Woodec Turner Oak\*, double-sided panels and embossing

**PREMIUM ENERGY**

**OPTIMUM ENERGY**

**OPTIMUM**

**STANDARD**

---

AVAILABLE OPENING METHODS



handle + handle



handle + door pull



handle + knob



access control, SMART lock in OPTIMUM ENERGY and PREMIUM ENERGY sets

See page 10-11



**MODEL G.2** Woodec Turner Oak\*, double-sided panels

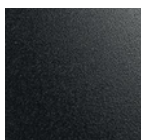


**MODEL G.3** Woodec Turner Oak\*, double-sided panels

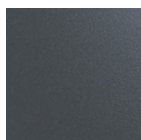


**MODEL G.4** Woodec Turner Oak\*, double-sided panels

**ALL MODELS AVAILABLE IN COLORS**



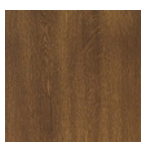
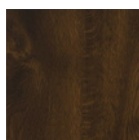
Black



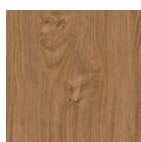
Anthracite



Anthracite Synchro Walnut Structure



Golden Oak



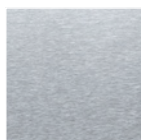
Winchester Oak



Woodec Turner Oak \*

\*Woodec Turner Oak not available in the STANDARD package.

**ACCESSORIES AND DETAILS IN COLORS**



Inox



Brushed Black (extra charge)

---

THE COLLECTION

# CLASSIC



**BASIC PRICE FOR THE MODEL INCLUDES: THE DOOR** (leaf width '90' / '100' + frame with threshold) equipped with a multipoint lock with hooks, adjustable strike plates, dog bolts and adjustable 3D hinges with caps  
**ACCESSORIES IN SILVER (Inox)** (handle with upper escutcheon, set of class B cylinders)

**MODEL C.1** Black, double-sided mouldings

**PREMIUM ENERGY**

**OPTIMUM ENERGY**

**OPTIMUM**

**STANDARD**

---

**AVAILABLE OPENING METHODS**



handle + handle



handle + door pull



handle + knob



access control, SMART lock in OPTIMUM ENERGY and PREMIUM ENERGY sets

See page 10-11



**MODEL C.2** Black, double-sided mouldings

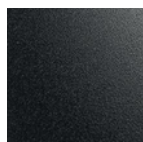


**MODEL C.3** Black, double-sided mouldings

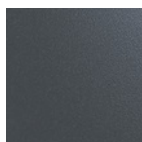


**MODEL C.4** Black, double-sided mouldings

**ALL MODELS AVAILABLE IN COLORS**



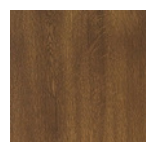
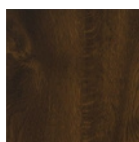
Black



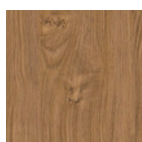
Anthracite



Anthracite Synchro Walnut Structure



Golden Oak



Winchester Oak



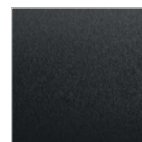
Woodec Turner Oak \*

\*Woodec Turner Oak not available in the STANDARD package.

**ACCESSORIES AND DETAILS IN COLORS**



Inox



Brushed Black (extra charge)

# MATCH THE ENERGY SAVING SET TO THE DOOR OF YOUR CHOICE **lower Ud parameter = improved thermal insulation**

THE MOST ENERGY SAVING

STANDARD	OPTIMUM	OPTIMUM ENERGY	PREMIUM ENERGY
<p><b>Ud=1.1</b> thermal insulation [W/m2K]</p>	<p><b>Ud=0.73</b> thermal insulation [W/m2K]</p>	<p><b>Ud=0.61</b> thermal insulation [W/m2K]</p>	<p><b>Ud=0.57</b> thermal insulation [W/m2K]</p>
<p>door leaf <b>construction wooden</b> rails and stiles + PUR foam core</p>	<p>door leaf <b>construction composite</b> rails and stiles + PUR foam core</p>	<p>door leaf <b>construction composite</b> rails and stile + PUR foam core</p>	<p>door leaf <b>construction composite</b> rails and stiles + PUR foam core</p>
<p><b>thickness 54 mm</b> 2.12 inches</p>	<p><b>thickness 66 mm</b> 2.59 inches</p>	<p><b>thickness 78 mm</b> 3.07 inches</p>	<p><b>thickness 66 mm</b> 2.59 inches</p>
<p><b>steel</b> frame</p>	<p><b>aluminium</b> door frame</p>	<p><b>aluminium</b> door frame</p>	<p><b>composite</b> door frame</p>
<p><b>steel</b> threshold</p>	<p><b>aluminium-composite</b> threshold strengthening the thermal insulation</p>	<p><b>aluminium-composite</b> threshold strengthening the thermal insulation</p>	<p><b>aluminium-composite</b> threshold strengthening the thermal insulation</p>
<p><b>standard</b> handle</p>	<p><b>premium</b> handle with increased safety parameters <b>RC2</b></p>	<p><b>premium</b> handle with increased safety parameters <b>RC2</b></p>	<p><b>premium</b> handle with increased safety parameters <b>RC2</b></p>
<p><b>X</b></p>	<p>possibility to add <b>transoms</b></p>	<p>possibility to add <b>transoms</b></p>	<p><b>X</b></p>

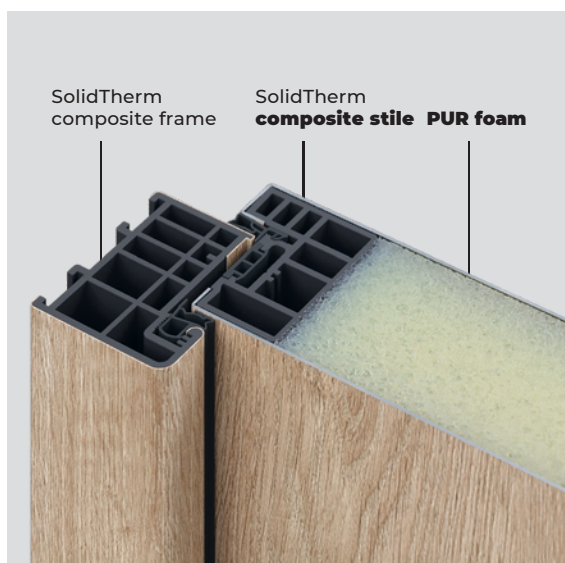
\*Ud coefficient is given for solid doors

# LEARN ABOUT THE DESIGNS THAT AFFECT THERMAL INSULATION PERFORMANCE

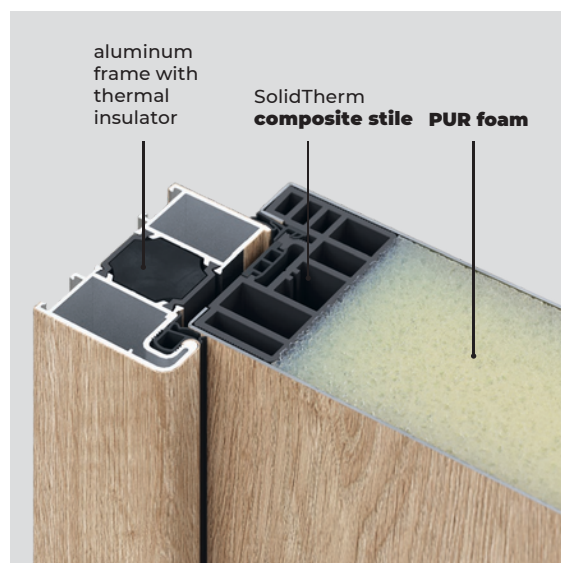
## DURABILITY FOR DECADES THANKS TO MODERN COMPOSITE TECHNOLOGY The **SolidTherm**

**composite** is a specially designed blend of ABS and fiberglass. Unlike wooden structures, it does not absorb moisture and does not deform with temperature fluctuations, and is durable. It guarantees thermal insulation of the structure and tightness of the door for many years.

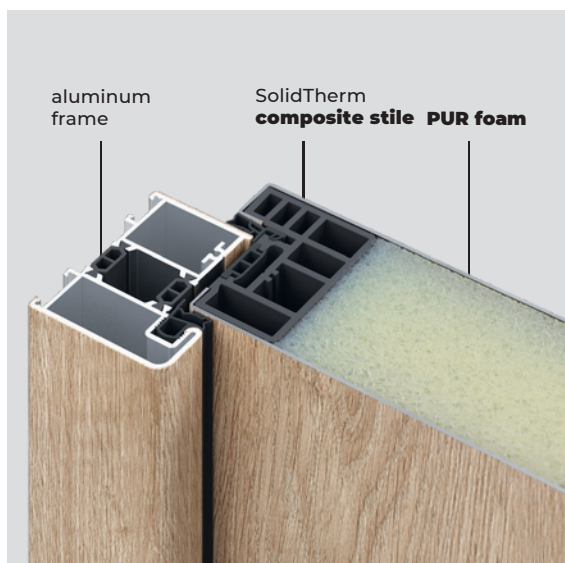
All leaves are filled with **PUR** (polyurethane) foam, which, in addition to high thermal insulation, solidly bonds the entire structure.



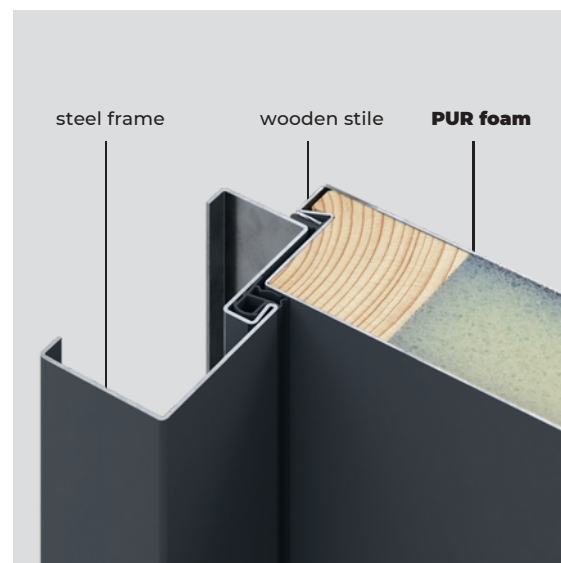
**PREMIUM ENERGY**



**OPTIMUM ENERGY**



**OPTIMUM**



**STANDARD**

# LEARN ABOUT THE BENEFITS THAT COME WITH EACH SET

## THE MOST ENERGY SAVING

STANDARD	OPTIMUM	OPTIMUM ENERGY	PREMIUM ENERGY
2-YEAR WARRANTY	2-YEAR WARRANTY	2-YEAR WARRANTY	2-YEAR WARRANTY
X	X	<b>5 YEARS OF PROTECTION</b> Up to 5 years of protection product at authorized installation <b>THERMO.</b>	<b>5 YEARS OF PROTECTION</b> Up to 5 years of protection product at authorized installation <b>THERMO.</b>
X	X	X	<b>THERMAL IMAGING SURVEY</b> Confirmation of the quality of installation and the product's thermal insulation level

\* Free with the purchase of the three-layer installation kit for THERMO DOORS



## MEASUREMENT / INSTALLATION

We will help you find a professional Installer who will measure and install the door using the best installation method.

Learn about our dedicated installation kits for THERMO doors created and recommended by Good Installation Academy installers.

**THE BASIC PRICE INCLUDES:** **doors:** leaf width '90' / '100' + frame with threshold, multipoint lock with hooks, adjustable catches, interlocking bolts and adjustable 3D hinges with caps, **accessories in silver (inox):** handle with top rose, set of B class cylinders

---

## EXTRA CHARGE LIST:

**HANDLE (SOLO SOLID) + DOOR PULL (ROUND OR SQUARE), bottom escutcheon + cylinder**

**inox** / 150 cm door pull + handle

**inox** / 150 cm door pull with push button + handle

**black** / 150 cm door pull + handle

**black** / 150 cm door pull with push button + handle

---

**HANDLE + HANDLE, upper escutcheon**

**inox** / handle + handle

**black** / handle + handle

---

**HANDLE + KNOB, upper escutcheon**

**inox** / knob + handle

**black** / knob+ handle

---

### CYLINDERS

**silver** / class B

**black** / class B

**silver** / with emergency function

**black** / with emergency function

**silver** / building grade

**black** /building grade

---

### LOCKS / ACCESS CONTROL

**electric door strike with the roller function (day / night)**

for solutions: handle + door pull / handle + knob

**electric door strike with the roller function + reed switch,**

for solutions: handle + door pull with push button / handle + knob

**reed switch** for all opening methods **SMART** (ekey dLine biometric reader,

Winkhaus EAV3 automatic door bolt, power supply), dedicated for door pulls without push buttons

---

### 12 V POWER SUPPLY

Dedicated to door pulls with a push button

---

### DOOR VIEWERS

**silver** / door viewer

**black** / door viewer

**silver** / panoramic door viewer

**black** / panoramic door viewer

---

### DOOR CLOSERS

**silver** / with an arm and lock function

**black** / with an arm and lock function

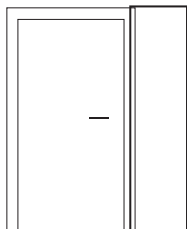
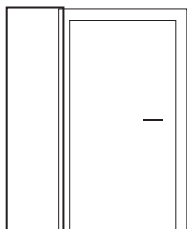
**silver** / with a rail and lock function

**black** / with a rail and lock function

reinforcement for door closer

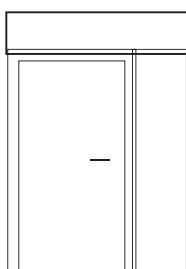
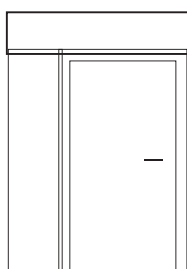
## SIDE AND UPPER TRANSOMS:

SIDELIGHTS FOR THE **OPTIMUM AND OPTIMUM ENERGY SET**

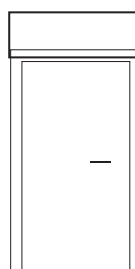


width	height			
400	2085	2185	2285	2385
500				
600				
700				
800				

### SIDE TRANSOM (dimensions in mm)



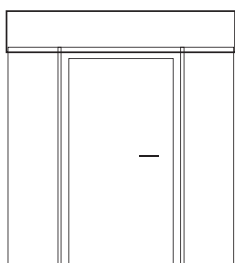
height	width	
1454	400	500
1554		
1654		
1754		
1854		
1954		



height	width	
1454	400	500
1554		
1654		
1754		
1854		
1954		

### UPPER TRANSOME AND SIDE TRANSOM OPTION (dimensions in mm)

### UPPER TRANSOM (dimensions in mm)



height	width	
1854	400	500
1954		
2054		
2154		
2254		
2354		
2454		
2554		
2654		
2754		

### UPPER TRANSOME WITH THE OPTION OF SIDE TRANSOMS (dimensions in mm)

## GLAZING AVAILABLE IN DOORS AND DOOR LIGHTS



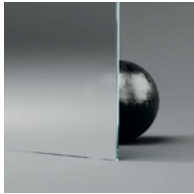
Black



Reflex graphite



Graphite



Venetian Mirror



Matt



Transparent

**EXTRA CHARGES FOR GLAZING IN DOORS / TO DOOR MODEL**

**Venetian Mirror**

**Black glass:**

- STANDARD SET - other sets

**EXTRA CHARGES FOR GLAZING OF TRANSOMS / PRICE PER m2**

**Venetian Mirror**

**Black glass**

The glazing we use (33.1 - safety) is characterized by increased impact strength, and has a protective function (after an impact, the glass breaks, but its pieces are held in place by an undamaged layer of PVB film).

Glazing is composite: doors - double-chamber (three-pane) or triple-chamber (four-pane) sets, depending on the thickness of the door, sidelights - double-chamber (triple-glazed) sets.

The glazing packages employ a thermally insulated inner frame in black.

## DIMENSIONAL TABLES

**THERMO exterior doors (standard height)**

	SIZE	S <sub>s</sub>	H <sub>s</sub>	D <sub>s</sub>	S <sub>o</sub>	H <sub>o</sub>	O <sub>s</sub>	O <sub>w</sub>	S <sub>z</sub>	H <sub>z</sub>	T <sub>s/w</sub>
STANDARD	90	968	2040	54	1050	2090	920	2025	1030	2080	+10/+5
	100	1068			1150		1020		1130		
	90	984			1074		934		1130		
OPTIMUM	100	1084	2037	66	1174	2095	1034	2042	1054	2085	+10/+5
	90	984			1074		934		1154		
	100	1084			1174		1034		1054		
OPTIMUM ENERGY	100	1084	2037	78	1174	2095	1034	2042	1054	2085	+10/+5
	90	984			1074		934		1154		
	100	1084			1174		1034		1054		
PREMIUM ENERGY	100	1084	2037	66	1174	2095	1034	2042	1054	2085	+10/+5
									1154		

When changing the height, the dimension of HS,HO,OW,HB,HZ is increased by 100 mm, 200 mm or 300 mm, respectively

**KEY TO DIMENSIONS**

S<sub>s</sub> total width of the door leaf (including the rebates)

H<sub>s</sub> total height of the door leaf (including the rebate)

D door leaf thickness

S<sub>o</sub> width of the wall opening prepared for embedding the frame

H<sub>o</sub> height of the wall opening prepared for embedding the frame, measured from the level of the finished floor

O<sub>s</sub> width in frame clearance

O<sub>w</sub> height of the opening after door installation (measured from finished floor level)

S<sub>z</sub> overall frame width

H<sub>z</sub> overall frame height

T<sub>s/w</sub> permissible tolerance of deviation in width | height of wall opening



#### BUILDING A SUSTAINABLE HOME

Through innovative design and production processes, we provide the most sustainable door, window and building solutions for customers today and tomorrow.

#### Contact Us



Phone:  
+1 512-522-2284



Email:  
[info@avoradoors.com](mailto:info@avoradoors.com)



Website:  
[www.AvoraDoors.com](http://www.AvoraDoors.com)



Address:  
Texas Facility 1309 Ave H Grand  
Prairie, TX 75050



AVORA DOORS

**ILLUMINATING** check options  
/ p. 15



**COHESIVE INTERIOR** see our range of  
interior doors



inside view

Model M.2 / Anthracite / OPTIMUM ENERGY package, square door pull + SOLO SOLID handle 400 mm sidelight