

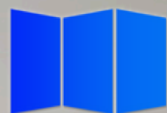


AVORA DOORS

Aluminum Doors & Windows.

Elevate your home with Avora Doors' Aluminum Doors & Windows. Sleek, durable, and built for modern living, they bring in light, boost efficiency, and stand the test of time — where craftsmanship meets innovation.

CRAFTSMANSHIP | SUSTAINABILITY | INNOVATION



AVORA DOORS





Beautiful and sustainable living

Step into a world where aluminium design meets true craftsmanship. At Avora Doors, every product is shaped with dedication, purpose, and an eye for long-lasting beauty. Our team works with precision to create systems that elevate your home built to look stunning, perform flawlessly, and stand the test of time.

From windows and doors to façade elements and custom aluminium solutions, each Avora product is engineered for modern living. We focus on comfort, strength, and visual elegance, bringing together the features that make everyday life better.

Sustainability drives everything we do. Aluminium is naturally insulating, endlessly recyclable, and contributes to a cleaner future. It's part of who we are and part of every Avora creation helping your home stay efficient while supporting the planet.

Innovation is at the heart of what we do. At Avora Doors, we're constantly creating, improving, and designing for the future. Our skilled team of engineers and designers works closely with builders, architects, and homeowners to bring every residential vision to life.









With trusted Avora partners and distributors providing guidance and support, planning a new build or upgrading an existing space becomes simpler and more seamless.

Until then, let our work inspire you.



Aluminium, a quality statement

With aluminium, you make a clear statement. You choose a durable and modern material with unique properties and advantages. For top quality and carefree enjoyment.

 <p>Diversity of styles</p>	 <p>Endless colour palette</p>	 <p>100% Belgian</p>
 <p>Recyclable product</p>	 <p>25 year Seaside colour guarantee</p>	 <p>Light & naturally strong</p>
 <p>Burglar-proof</p>	 <p>Maintenance friendly</p>	 <p>Energy-efficient</p>

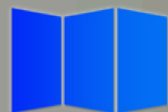


Creative with aluminium

Minimalist, clean lines, distinctive appearance, delicate detailing... it is no surprise that the purest architectural pearls are created with aluminium.

Architecture with large windows, for example, for a boundless indoor and outdoor feeling. Or timeless facade cladding with vertical and horizontal profiles in various designs. Anything but average. Aesthetically and thermally in perfect balance.

Which is why architects like to be creative with aluminium. And Avora Doors helps them develop 'the perfect fit'.



AVORA DOORS



©Aluextra

- 8 -

WINDOWS

more light, more happiness

Natural light, comfortable temperatures, and a peaceful atmosphere are key to a healthy home. Windows play a big part in creating that environment. They open your space to the outside world, bringing in brightness and a calming connection to your surroundings.

High-quality thermal and acoustic performance in windows and doors helps block out heat, cold, and unwanted noise—making your home quieter, cozier, and more enjoyable.

That's what comfort feels like.

Aluminium windows are light makers and good luck charms!



IMPRESSIVELY SLIM,
MAXIMUM LIGHT

MAX LIGHT



Are you a fan of large glass surfaces and narrow window frames? Then choose the Max Light. This window system consists of 4 different styles to suit your home. Fixed windows, upturned single or double windows, and tilt-and-turn windows. Invisible drainage makes this window even more beautiful.



MODERN



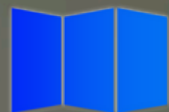
STEEL



DESIGN



INVISIBLE



AVORA DOORS





©Alu-xtra



MAX LIGHT STEEL

Extend your architectural style to your windows

Max Light Steel are aluminium windows with a steel look. Ideal for lofts or industrial buildings, but also perfect in country villas. With the Steel version, cross timbers are often chosen to subdivide your window.





AVORA DOORS





STAR75

The latest technologies and innovations united in one window system.

The streamlined design of the Star75 in combination with the ultra-performance insulation makes this the ideal window system for low-energy homes, whether newly constructed or renovated.

Curved windows? That's also possible. Avora Doors bends the aluminium profiles in its own workshop.

Choice of 3 styles:
Modern, Luxus, Invisible

25
YEARS
COLOR
LOCKED

25-year colour guarantee on more than 50 colours. Read more on page 64

FOR EVERY
ARCHITECTURAL STYLE



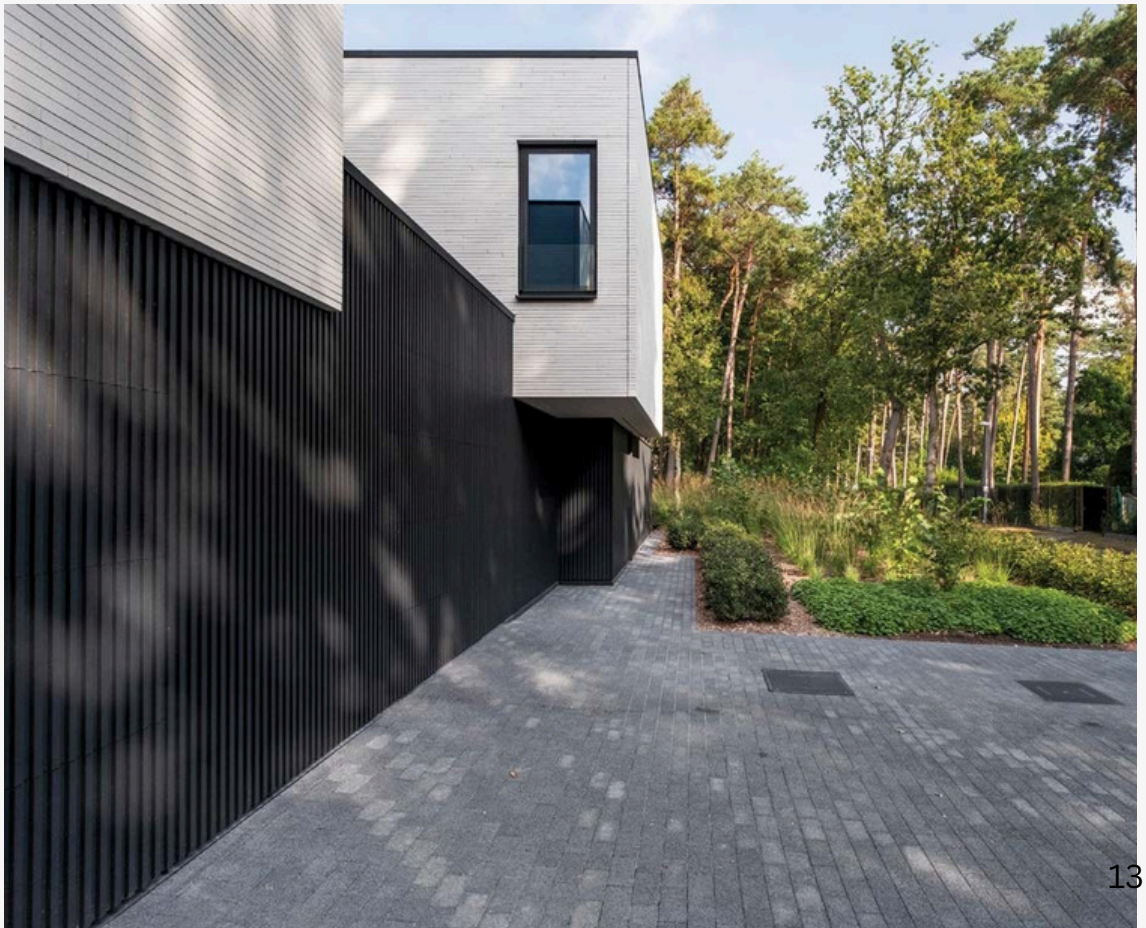


AVORA DOORS



STAR75

Star75 invisible or hidden wing. What makes this window system unique is that fixed windows and windows that can open are now indistinguishable from each other.





AVORA DOORS



Thanks to hidden wing

Minimalist

With its invisible wing design, this window system achieves a truly seamless look—fixed panels and operable windows appear identical, creating a clean, uninterrupted façade that defines modern minimalism and elevates the architecture with subtle sophistication.



AVORA DOORS



THE REAL
COMFORT WINDOW
THAT MAKES WARMTH
AND SILENCE TANGIBLE

STAR90

This window system excels thanks to its excellent thermal properties, making it particularly suitable for use in passive construction projects. A passive house is a highly insulated house with ideal comfort in winter (warm) and in summer (cool). It has a high-quality thermal shell, which means that it consumes very little energy.

The acoustic performance of the Star90 also greatly increases the comfort of the residents.

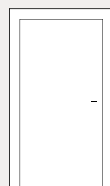


Suitable for passive construction
 $U_w = 0.80 \text{ W/M}^2\text{K}^*$

DOORS

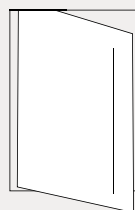
first impression

You get the first impression of a home the moment you open the door. That's why Avora Doors offers a wide selection of door designs to match every style. The opening wing can be crafted from glass, an aluminum panel, or a combination of both—customized to your vision. For an even more streamlined interior look, choose invisible hinges.



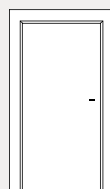
SMOOTH DOOR

Modern solution in which the opening wing is in line with the door frame. So, there is no difference in level, either on the inside or outside.



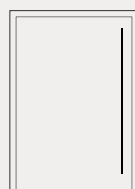
PIVOT DOOR

Unique architectural pivot door in which the invisible integrated hinges in the floor and ceiling ensure that the door rotates around its vertical axis.



OVERLAY DOOR

Door in which the opening wing rests on the frame.



XL MAGNITUDE DOOR

An architectural door where the decorative panel is on top of the wing, and everything looks streamlined. The magnet system ensures that your door doesn't jam when the sun shines on it.

DOORS.



AVORA DOORS

Architectural

Pivot door with invisible hinges.



AVORA DOORS



DOORS

A door handle or door pull is a small detail that makes a big difference. Whether from our permanent collection or custom-made, Avora Doors finishes each handle in the same color as your door. Because we like everything to be perfectly matched.

And because safety is also important, all the exterior doors have a multi-point lock. It is still possible to open the door with a key, but automated doors with a keypad, mobile phone or finger scan are becoming increasingly popular.





AVORA DOORS





AVORA DOORS

SLIDING WINDOWS

an infinite view

Looking to bring a minimalist look into your home and enjoy a stunning view outside?

Avora Doors aluminum sliding windows create the magic. They open up your space with more light, more flow, and more freedom. Whatever your lifestyle calls for — universal, open-corner, recessed-sill, or ultra-slim minimalist profiles.

Avora Doors offers a sliding window system that glides effortlessly and elevates every room.

Here's to a blissful indoor-outdoor feeling. May your home feel as open and inspiring as the view beyond.





VG500

The VG500 is multi-usable for different house styles and satisfies all the contemporary requirements relating to thermal insulation values.

Choose a monorail if you want a narrower window frame, giving you a greater incidence of light. Or opt for a duorail in which the fixed and movable parts are in symmetry. The aesthetic highlight is a flat sill where the floor inside and outside is at the same height, with no step. And very wheelchair friendly.

THIS VG500 IS ALSO AVAILABLE IN A MAXLIGHT VERSION WITH SLIMMER PROFILES.

UNIVERSAL
SLIDING WINDOWS
FOR NEW BUILDINGS
AND RENOVATION



Flat

sill



AVORA DOORS



© ALU-xtra



ULTRAGLIDE

THE ULTIMATE
SLIDING WINDOW
IN LARGE SIZES

A room with a view — that's exactly what you create with the ultra-large Ultraglide sliding window. Choose the lift-and-slide system if you want the 450 kg sliding wing to glide effortlessly every time.

**THIS ULTRAGLIDE IS ALSO AVAILABLE IN A
MAXLIGHT VERSION WITH SLIMMER PROFILES.**



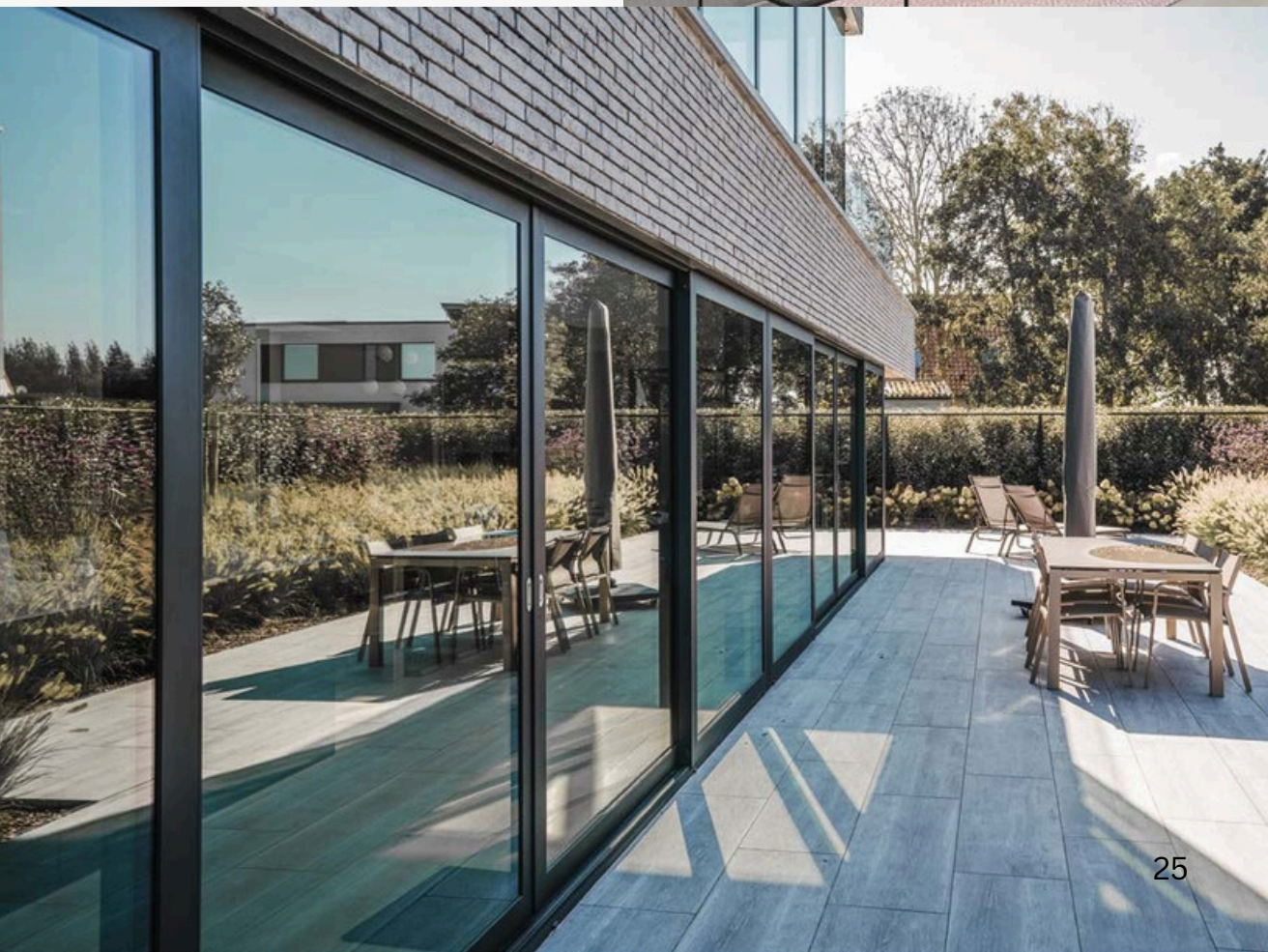
AVORA DOORS

ULTRAGLIDE

An open angle of 90°: it's possible with this Ultraglide sliding window. No window profile on the corner, an open view outside!

You can choose between a monorail, duorail or even trirail where you slide open 2 parts, one behind the other.

Safe? Absolutely. The Ultraglide and VG500 are RC2-certified for burglary prevention.





AVORA DOORS

**Big
Bigger
Biggest**

© Alu-xtra

MINILINE

Miniline is like a sliding glass wall. All the aluminium profiles are built into the floor, ceiling and wall. What remains: only the vertical aluminium profile, which is just 2cm wide. Thermally insulated.

Can be made up to 4 metres high. Your home and the space around it become one.





AVORA DOORS





AVORA DOORS

GIGA-GANTIC OPENNESS

PANORAMA

With a Panorama folding wall, you slide all the parts open to 1 side or from the middle to both sides. No fixed part is left, so that your room becomes an open space. Want to lock your pool house? This glass harmonica wall works perfectly.



MC WALL

If you are looking for an extremely large window that exceeds the limits of our normal windows, a curtain wall is the ideal solution.



CONSERVATORIES

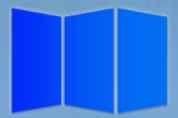
cocoon in style



Joie de vivre: that's what we introduce into your life with an Avora Doors conservatory. The beauty, the comfort and the constant connection with outside create an instant feeling of happiness. Enter a space that allows you to immerse yourself in the surrounding nature, season after season. A meeting space, a place to recharge your batteries, a home office... a conservatory as an extension of your home is the sublime decor that meets all your needs.

A world of possibilities opens up to you. Feel it for yourself.

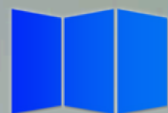




AVORA DOORS

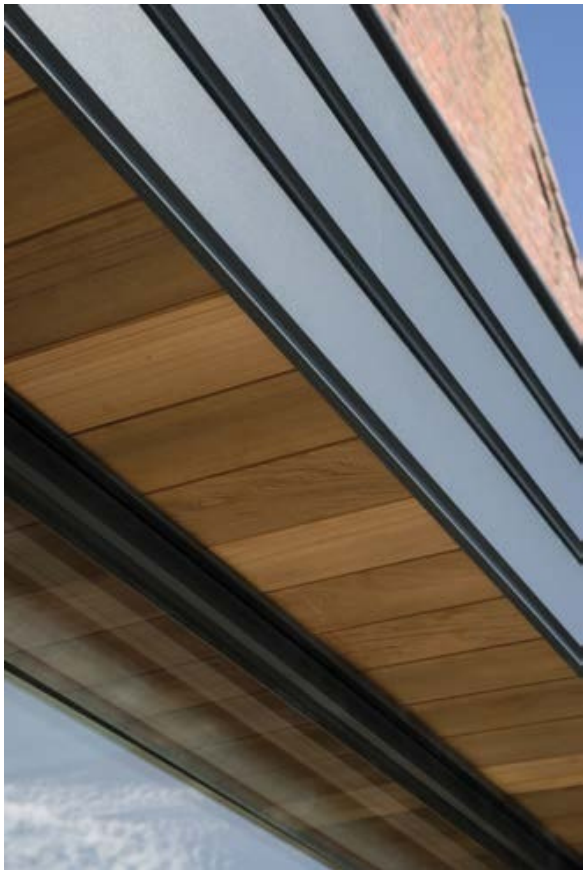
Space in which to meet





AVORA DOORS





A conservatory is an excellent place for relaxation. To relax and find serenity after a hard day.

Enjoy the sun with the sliding windows open or watch the snow with the windows closed. Your Avora Doors conservatory is thermally insulated, making it a wonderful place to spend time every day. It is an extension of your home that provides an instant feeling of happiness, season after season. You decide what your conservatory looks like. Classic or modern? It's always cosy.



AVORA DOORS

Space in which to relax





AVORA DOORS

Space in which to enjoy



Because you can look up at the sky. And see the sun or the stars. It feels like you're outside, but you're sheltered. Beautiful furniture, soft cushions, fine interior design items: they can stay there all year round without getting soiled.

Enjoying your conservatory means enjoying nature. Avora Doors also thinks of that. Aluminium is 100% recyclable, so no aluminium ends up in the landfill. A conservatory is best combined with Star65 or Star75 windows or a VG500 sliding window. Aluminium systems for which Avora Doors has been awarded a Silver Cradle to Cradle certificate. So, they contain no harmful substances: good for you and good for the environment.

Choose from a wide range of colours and enjoy a standard 15-year colour guarantee or a 25-year guarantee on more than 50 colours. Ask our Avora Doors distributors. You can find them on our website: www.AvoraDoors.com.



OUTDOOR

holiday in your garden

Create a holiday feeling in your home. With a pergola or louvre roof, you can enjoy beautiful days from the first day of spring until well into autumn. It offers you shelter when it rains or cool shade in the middle of summer. Our glass sliding systems protect you from the wind without obscuring the view of your garden. A moment for yourself or a party with friends is never far away.

Driven by innovation and with a passion for beauty, let us introduce you to our outdoor options.



SOMNIUM

A pergola with louvres that perfectly matches your home. Attached to the facade or free-standing in the garden. You can open and close it with the remote control. You choose: give the sun complete free play, tone down the sun's rays a little or enjoy complete shade. When it rains, the louvres close automatically. Yes, with this minimalist and streamlined Somnium you hardly need to lift a finger.





AVORA DOORS

Space to experience





AVORA DOORS



SOMNIUM & GLASS GLIDE

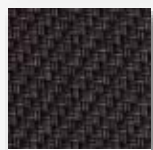
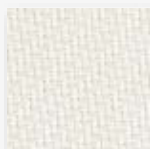
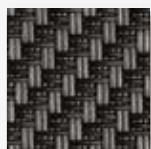


AVORA DOORS



Space to **PERSONALISE**

Design your pergola the way you want it. The Somnium can be fitted with a roof in louvres or in glass. Or one linked to the other. If you want extra protection against the wind, go for a Glass Glide glass windbreak or for the sunscreens that slide down into the support posts. You can choose them in a colour that matches your Somnium. Are you the romantic type? Then the built-in LED lighting creates a pleasant vibe in the evening.

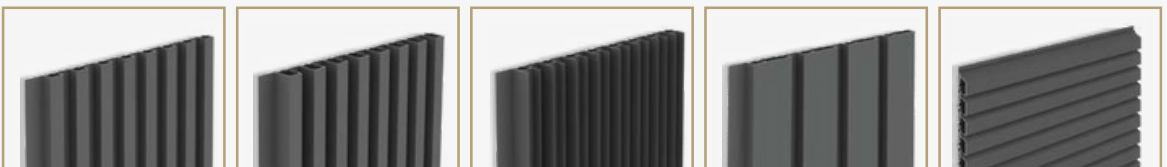


DECO WALL



YOUR HOME IN A CHIC
AND TRENDY LOOK WITH
THIS CLADDING

The aluminium Deco Wall facade cladding is the favourite of architects as a finishing touch for modern homes. Contemporary, stylish and sustainable through and through. The facade cladding is constructed using a simple click system with vertical or horizontal profiles in a range of designs. The invisible attachment and the straight lines give your home a streamlined look. Choose from 4 finishing profiles for vertical placement and 1 for horizontal placement. You can also use it to cover doors and gates.



NARROW 2 CM DEEP NARROW 4 CM DEEP OPEN U-PROFILE WIDE 2 CM DEEP HORIZONTAL



AVORA DOORS





AVORA DOORS

INTERIOR DOORS

sublimely stylish
living comfort



SINGLE DOORS



DOUBLE DOORS



PIVOT DOORS



SLIDING DOORS



INTERIOR WALLS

IDA - Interior Doors Aluminium.

Synonymous with minimalist interior doors and walls that envelop and fill your interior with atmosphere, character and cosiness. The unique finishing touch. With IDA, you invite daylight into your home. Flexibility is the key, because you can combine single, double, pivot doors and sliding doors with fixed glass walls.





AVORA DOORS

AN OPEN AND
STYLISH SENSE OF
SPACE AND PRIVACY

IDA DOORS





Space and **LIGHT IN YOUR HOME**





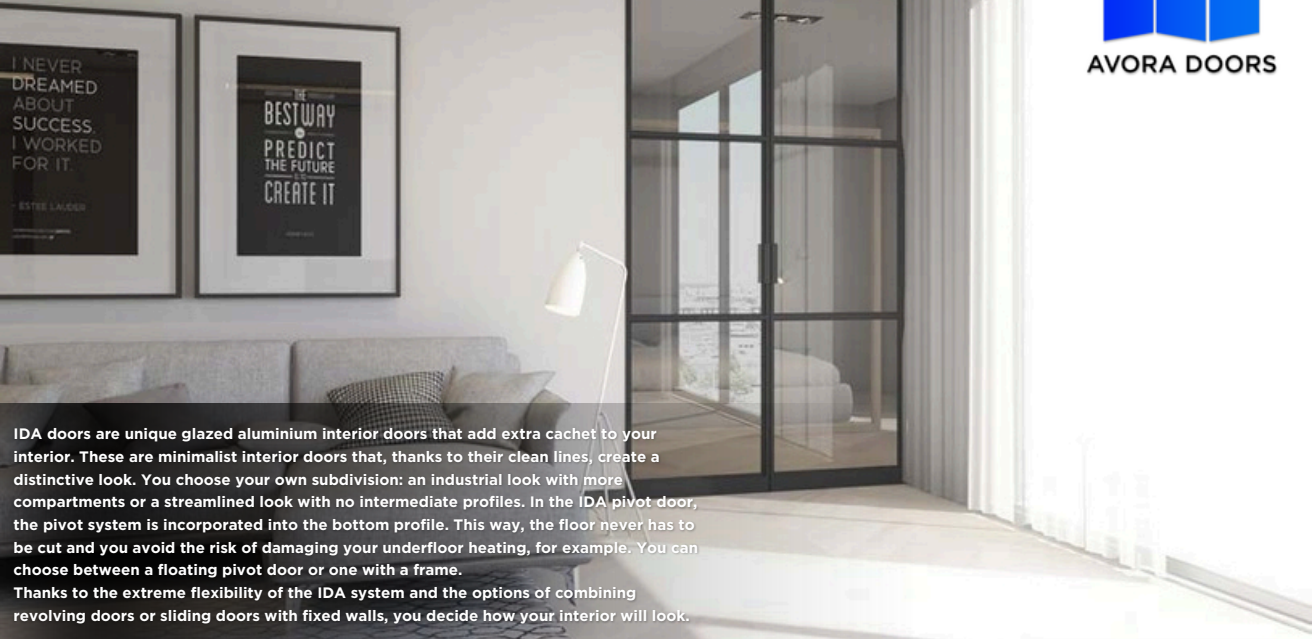
AVORA DOORS

IDA DOORS





AVORA DOORS



IDA doors are unique glazed aluminium interior doors that add extra cachet to your interior. These are minimalist interior doors that, thanks to their clean lines, create a distinctive look. You choose your own subdivision: an industrial look with more compartments or a streamlined look with no intermediate profiles. In the IDA pivot door, the pivot system is incorporated into the bottom profile. This way, the floor never has to be cut and you avoid the risk of damaging your underfloor heating, for example. You can choose between a floating pivot door or one with a frame. Thanks to the extreme flexibility of the IDA system and the options of combining revolving doors or sliding doors with fixed walls, you decide how your interior will look.



MODERN RAIL



INDUSTRIAL RAIL



25-year colour guarantee, that's unique

You can enjoy a unique 25-year colour guarantee on Avora Doors complete T - TC - PT - MT colour range. With a 'Qualicoat Seaside' label on top of that. This guarantees excellent colour performance, even at sea where the salty wind is extra stressful for your aluminium profiles. But any other colour of your dreams is also available. You receive a 15-year colour guarantee as standard.

And because we have 3 powder coating installations at Avora Doors, we have full control over the process and these guarantees are a promise!





Matte, glossy or textured

We powder-coat your aluminium windows and doors in the colour of your choice. You decide whether they are given a matte, glossy or granulated look.

Bicolour

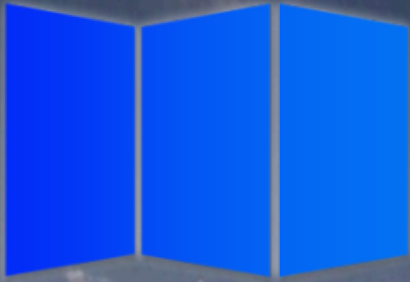
You want the exterior colour of your windows to match your facade. But for the inside, would you like a colour that matches your interior? Then choose bicolour windows and Avora Doors will powder-coat the inside and outside of your windows in two different colours.



Anodisation

If you like the original aluminium structure, you can have your windows anodised. They are then dipped in a chemical electrolytic bath and given the colour of your choice in a metal oxide bath. Very trendy and stylish!





AVORA DOORS

Contact Us



Phone:
+1 512-522-2284



Email:
info@avoradoors.com



Website:
www.AvoraDoors.com



Address:
Texas Facility 1309 Ave H Grand
Prairie, TX 75050

