

AVORA DOORS

THIN FRAME WINDOWS & DOORS

Avora Doors presents a premium selection of Thin Frame Windows and Doors crafted for modern aesthetics, durability, and maximum visibility. Perfect for homes or commercial projects, each product is tailored to meet your unique design and performance needs.

Sleek

| *Durable*

| *Customizable*

Contact Us



Phone:
+1 512-522-2284



Email:
info@avoradoors.com

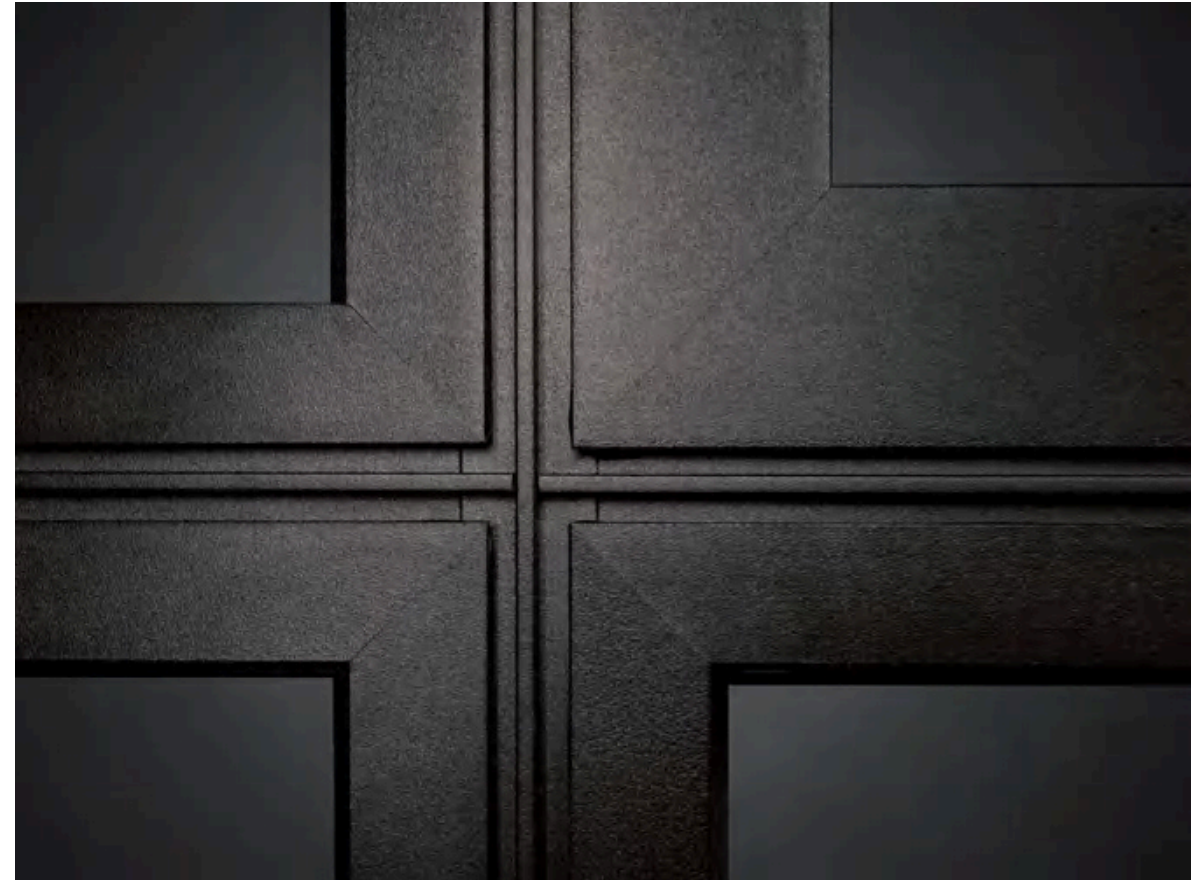


Website:
www.AvoraDoors.com



Address:
Texas Facility 1309 Ave H
Grand Prairie, TX 75050

75/85 System Horizontal Window Series



Product Introduction

75/85 System Casement Window Series

- Slim frame design, glass area over 88% (12% more than standard windows)
- Concealed hardware for a minimalist, elegant look with multiple opening options
- Thermal break structure, wall thickness up to 2.5 mm for strength and insulation
- Durable craftsmanship, adhesive-injected joints for higher load capacity
- Glass options: 35 mm slot supports triple glazing, laminated, or insulated glass
- Screen options: external or internal opening; 85 series features flush frame-sash design

Color Series



Jazz Black Metallic Titanium Gray Dark Coffee Ceramic Champagne Enamel White



Inner Glass Gasket

- Interior and exterior can be dual-color; both sides customizable

Inward-Opening Sash Specifications

Fan Width	400-950MM
Fan Height	400-2800MM
Load Bearing	150KG

75/85 Inward-Opening & Tilt-Turn Technical Parameters

Visual Dimension		Profile Thickness	Profile Wall
Frame Width: 44 mm	Sash Overlap with Frame: 71 mm	Frame: 75 / 85 mm	1.6~2.5MM
Mullion: 61 mm Opening Sash: 50 mm	Sash Overlap with Mullion: 88 mm	Sash: 85 mm	

Turn on direction

- Internal flat opening
- Inside-out
- Level off
- Outside hanging
- Outward openhanging

75 Outward-Opening Technical Parameters

Visual Dimension		Turn	Thickness	Profile Wall
Frame Width: 44 mm	Sash Overlap with Frame: 71 mm	Sash Overlap with Frame: 95 mm	Frame: 75 mm	1.6~2.5MM
Mullion: 61 mm Opening Sash: 28 mm	Sash Overlap with Mullion: 88 mm	Sash Overlap with Mullion: 112 mm	Sash: 85 mm	

118 System Casement Window Series



Product Introduction

118 Series Integrated Screen Casement Window

- Integrated window & screen design, frame and sash flush (for outward-opening)
- Handles: hidden handle standard; inward-opening sash optional with exposed handle, outward-opening only with hidden handle
- Screen: standard 0.8 mm 304 stainless steel mesh (black, optional silver); HD mesh optional
- Concealed hinges for better airtightness and a cleaner look

Color Series



- Supports dual-color design; interior and exterior colors customizable

Outward-Opening Sash Specifications

Fan Width	400-950MM
Fan Height	400-1900MM
Load Bearing	80KG

118 Inward-Opening & Tilt-Turn Technical Parameters

Visual Dimension		Profile Thickness	Profile Wall
Frame Width: 44 mm	Sash Overlap with Frame: 71 mm	Frame: 118 mm	1.6~2.5MM
Mullion: 61 mm Opening Sash: 50 mm	Sash Overlap with Mullion: 88 mm	Sash: 85 mm	

Turn on direction

- Internal flat opening
- Inside-out
- Level off
- Outside hanging
- Outward openhanging

118 Outward-Opening Technical Parameters

Visual Dimension		Profile Thickness	Profile Wall
Frame Width: 44 mm	Sash Overlap with Frame: 95 mm	Frame: 118 mm	1.6~2.5MM
Mullion: 61 mm Opening Sash: 28 mm	Sash Overlap with Mullion: 112 mm	Sash: 85 mm	

128 System Flat Window Series



Product Introduction

85 & 128 Series Casement Windows

- Sealing: Optional glue-free design with inner/outer pressure strips or sealant; automotive-grade EPDM co-extruded gaskets for excellent sealing and long lifespan
- Frame Design: Integrated corner-pressed bead, slimmer interior lines for a more elegant and narrow look
- Integrated Screen: Frame and sash flush; inward-tilt series has only 27 mm visible mullion for a minimalist style
- Craftsmanship: All series use adhesive-injected joints on frame, sash, and mullion for stronger structure and higher load capacity

Color Series



- Interior and exterior can be dual-color; both sides customizable

Inward-Opening Sash Specifications

Fan Width	400-950MM
Fan Height	400-2800MM
Load Bearing	150KG

128 Inward-Opening & Tilt-Turn Technical Parameters

Visual Dimension		Profile Thickness	Profile Wall
Frame Width: 44 mm	Sash Overlap with Frame: 71 mm	Frame: 128 mm	1.6~2.5MM
Mullion: 61 mm Opening Sash: 50 mm	Sash Overlap with Mullion: 88 mm	Sash: 85 mm	

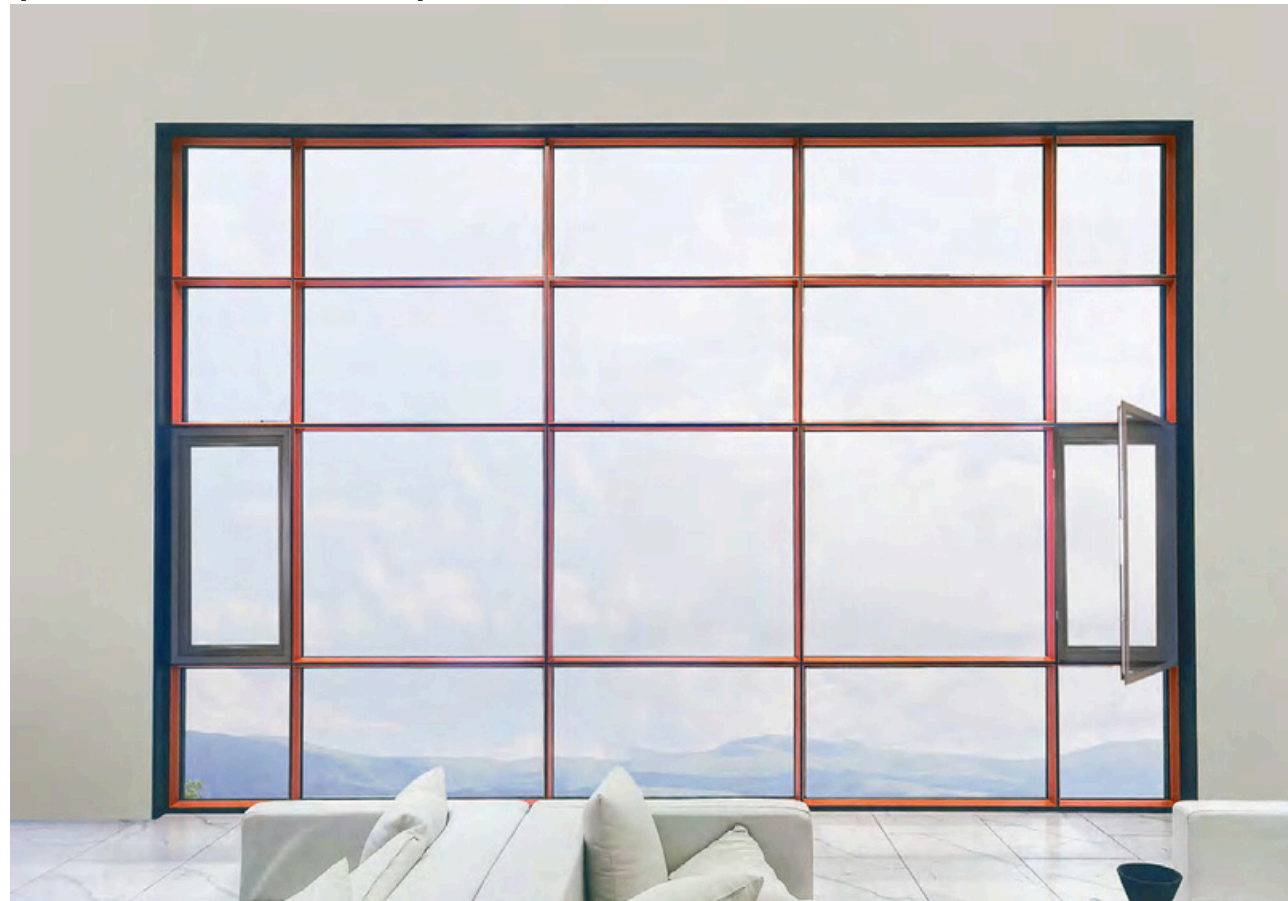
Turn on direction

- Internal flat opening
- Inside-out
- Level off
- Outside hanging
- Outward openhanging

128 Outward-Opening Technical Parameters

Visual Dimension		Profile Thickness	Profile Wall
Frame Width: 44 mm	Sash Overlap with Frame: 95 mm	Frame: 118 mm	1.6~2.5MM
Mullion: 61 mm Opening Sash: 28 mm	Sash Overlap with Mullion: 112 mm	Sash: 85 mm	

118/128 System Casement Window (Athens Series)

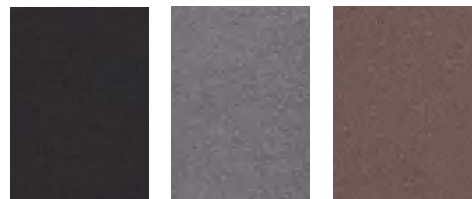


Product Introduction

Upgraded 118 & 128 Series Casement Windows

- Beveled bead design, slimmer visible frame, more stylish appearance
- Slim-frame integrated screen, double-sided flush sash design
- Dual drainage: both exposed and concealed options, with unique floor-drain system
- Optional opening anti-theft grille for safety and practicality
- Automotive-grade EPDM sealing strips for durability and strong performance

Color Series

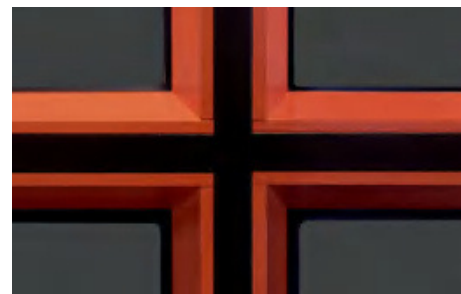


Jazz Black Metallic Titanium Gray Dark Coffee

- Supports dual-color design; interior and exterior colors customizable

Turn on direction

- Internal flat opening
- Inside-out
- Level off
- Outside hanging
- Outward openhanging



Beveled Bead

118/128 System Casement Window (Beethoven Series)



Product Introduction

Upgraded 118 & 128 Series Casement Windows

- Trapezoid bead design, slimmer visible frame, more elegant look
- Slim-frame with integrated screen, double-sided flush sash design
- Dual drainage: exposed and concealed, with unique floor-drain system
- Optional opening anti-theft grille, safe and practical
- Automotive-grade EPDM co-extruded sealing strips for excellent durability and performance



Trapezoid Bead



Concealed Drainage

160 System Curtain Wall Horizontal Window Series



FLAT WINDOW HARDWARE

INSIDE WINDOW HARDWARE HANDLE



HOPO pro



Italian STORO



Italian GIESSE

OUTSIDE WINDOW HARDWARE HANDLE



HOPO Concealed Type



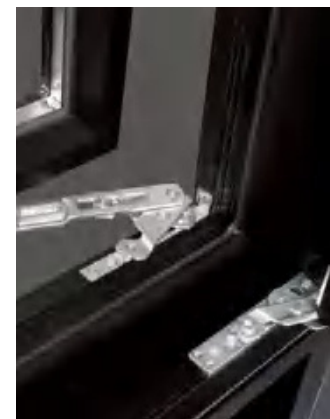
Italian STORO Concealed Type

Inward-opening windows can use either exposed handles or concealed handles, while outward-opening windows can only use concealed handles.

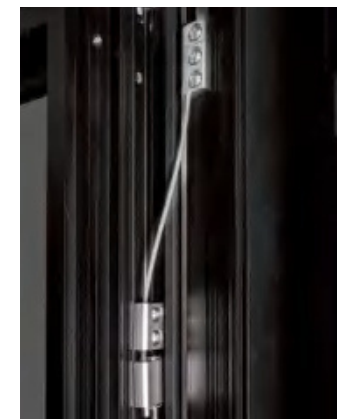
Glass Guardrail



Detail Care



High Load-Bearing Hinges



Anti-Fall Rope



Child Safety Lock

STRUCTURAL DIAGRAM AND SEALING PROCESS

Casement windows all use a system sealing process, with glue applied at every connection point for strength and durability. Structural diagram



Mullion Sealing:



Outer Frame Corner Sealing:

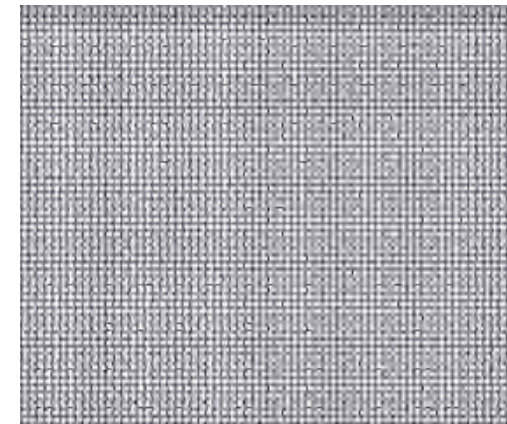


Sash Pin Sealing:

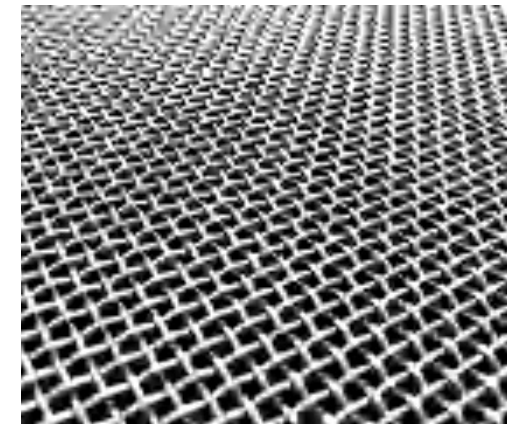


Introduction to Specialized Stainless Steel Mesh Screen Window

High-definition 304 mesh, with stronger transparency



Standard 0.8 stainless steel mesh, thicker and more durable



Specialized locks for stainless steel mesh screen windows



Fan Width

When locked, the screen window cannot be opened, providing an anti-theft function. When unlocked, the screen window can be opened for easy cleaning.

Seamless Glass Corner

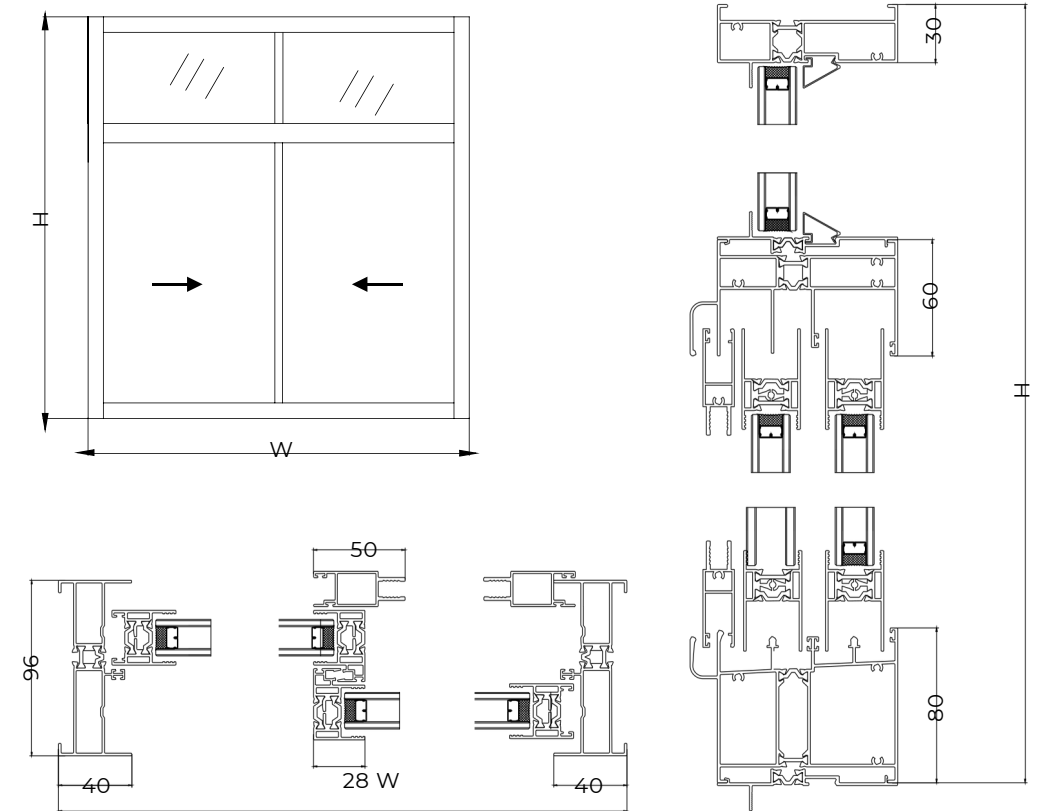


After special shaping, the glass is joined at a 90° corner without using aluminum mullions, providing a clearer view and a stronger overall visual effect.

96 Thermal Break Sliding Window Series



Node Diagram

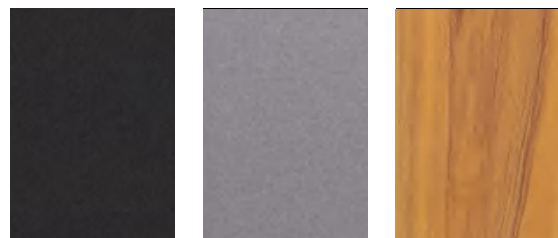


Product Introduction

96 Series Sliding Window

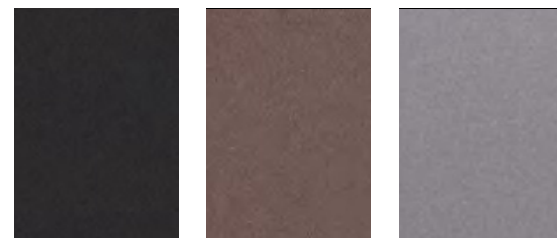
- Slim frame design for more light, glass area over 88% (12% higher than standard windows)
- Side-mounted latch, simple and convenient to use
- Thermal break structure for better insulation
- Three-track system with integrated stainless steel mesh screen
- Glass specification: 5 + 15A + 5 insulated glass

Indoor Color



Jazz Black Space Gray Brazilian Rosewood

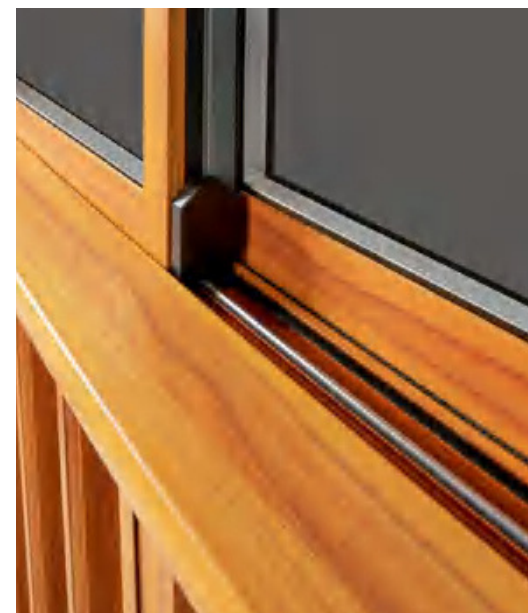
Outdoor Color



Jazz Black Metallic Coffee Space Gray

- Supports dual-color customization for interior and exterior, with selectable colors on both sides

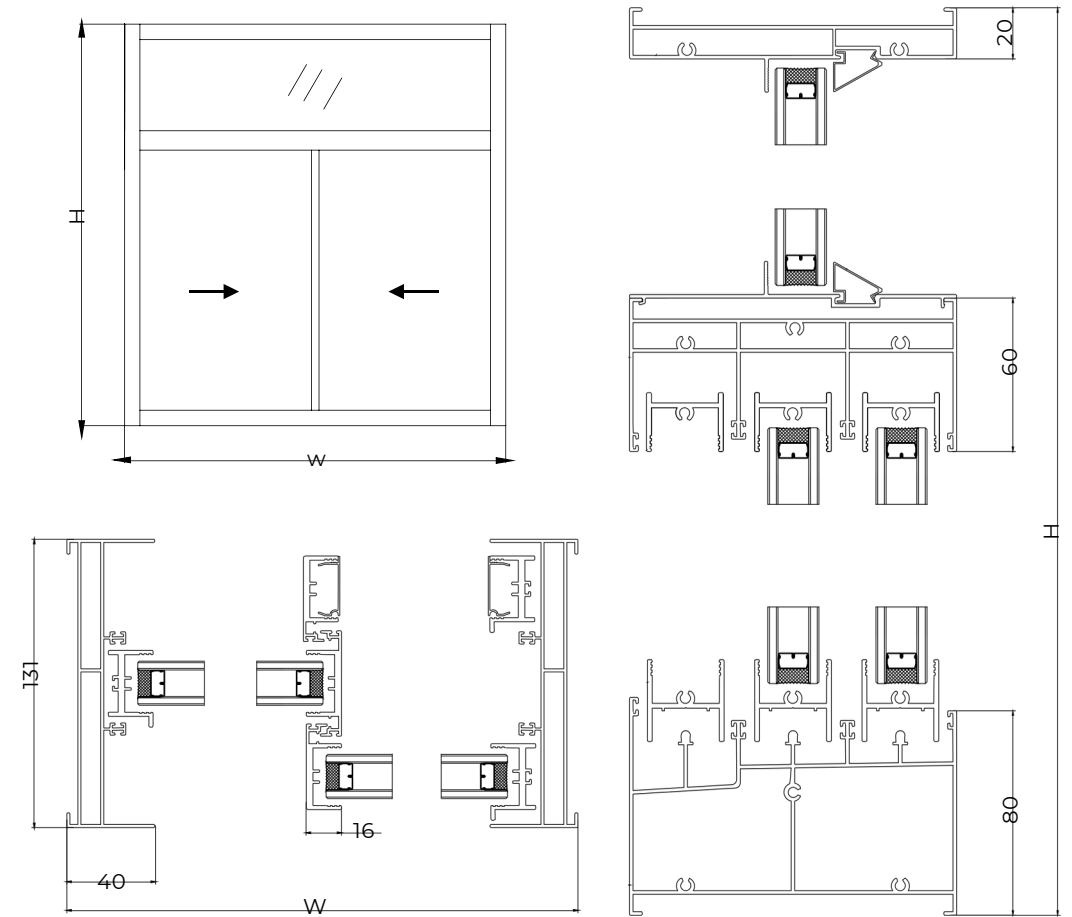
Optional installation of Guardrail and Handrail



130 Ultra-Slim Sliding Window Series



Node Diagram



Product Introduction

130 Series Sliding Window

- Slim frame design with over 90% glass area (15% higher than standard windows) for maximum light and openness
- Side-mounted latch, easy and convenient to use
- Non-thermal break design
- Three-track system with integrated stainless steel mesh screen
- Glass specification: 5 + 15A + 5 insulated glass

Color Series



Jazz Black

Space Gray

Metallic Coffee

- Does not support dual-color customization; single color can be selected

Optional installation of Guardrail and Handrail



75/118 Thermal Break Insulated Casement Door Series

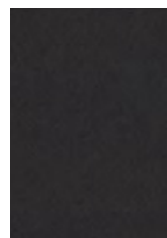


Product Introduction

Thermal Break Swing Door

- Thermal break structure with large insulated cavity for excellent sound and heat insulation
- Heavy-duty hinges to prevent sash sagging
- Strong waterproofing, airtightness, and wind resistance
- Compatible with 304 stainless steel mesh door or accordion folding screen door
- Injected adhesive craftsmanship on frame and sash for high structural strength
- Glass options: 5 + 24A + 5 insulated tempered glass, supports triple glazing (three glass, two cavities)

Color Series



Jazz Black



Heavy-Duty Hinge

- Supports dual-color customization for interior and exterior, with selectable colors on both sides

Folding screen door



Folding Screen Door (Half Open)



Folding Screen Door (Fully Closed)



Standard with HOPO



Upgradeable to iHandle Fingerprint Lock

Opening Sash Specifications

Fan Width	400-1000MM
Fan Height	1200-2600MM
Load Bearing	200KG

75/118 Casement Door Technical Parameters 75/118

Visual Dimension		Profile Thickness	Profile Wall
Frame: 44	Opening Sash: 93	Outer Frame: 75/118	1.6MM
Mullion: 61		Sash: 85	

Turn on direction

- Internal flat opening
- Level off

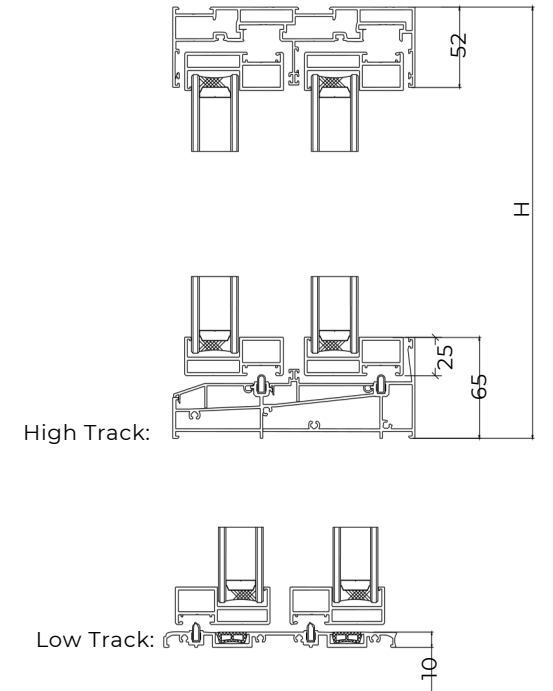
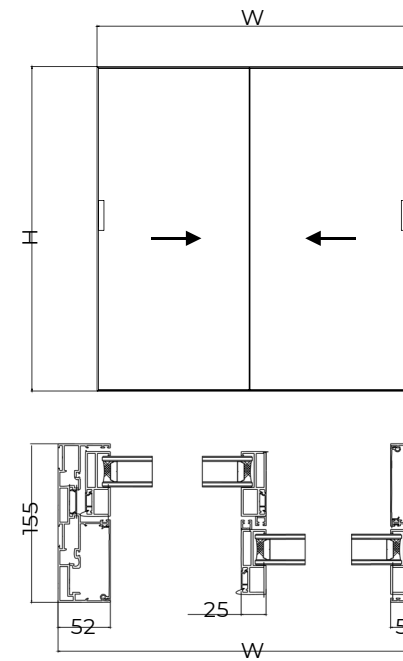
25 System Ultra-Slim Hidden Sash Sliding Door



AVORA DOORS



Node Diagram



Visible Lock



Concealed Lock

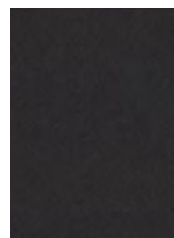


Product Introduction

Ultra-Slim Sliding Door

- Ultra-narrow frame, light transmittance up to 95%
- Concealed side-mounted hardware, minimalist and elegant, easy to use
- Swing-roller sealing system with anti-lift function for enhanced safety and security
- Embedded hidden sash design, wind-resistant and typhoon-proof
- System adhesive craftsmanship for high strength; single panel up to 8 m²
- Track options: high track for outdoor use, low flat track for indoor use
- Glass: 5 + 20A + 5 insulated tempered glass, optional built-in blinds

Color Series



Jazz Black

- Same color inside and outside, customizable color

Opening Sash Specifications

Single panel not exceeding 8m²

Fan Width	400-4000MM
Fan Height	1200-4000MM
Load Bearing	300KG

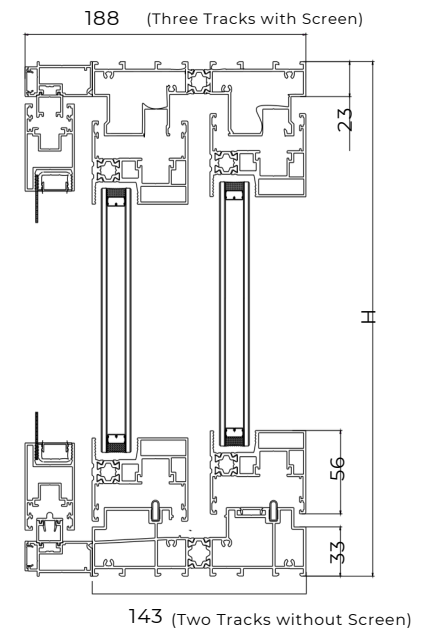
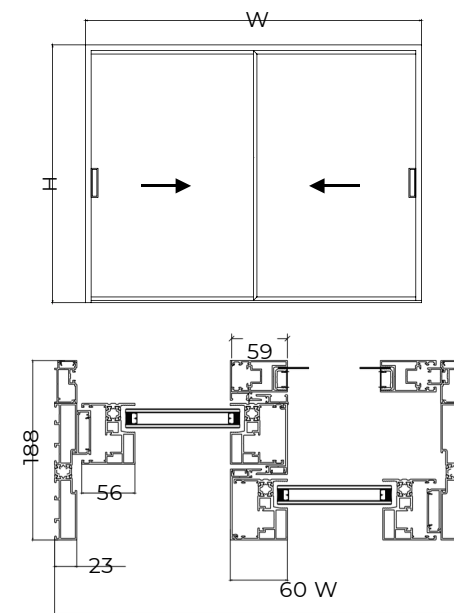
Turn on direction

- Two rails, two fans
- Two rails, three fans
- Two rails, four fans

56 Series Insulated Lift-Sliding Door



Node Diagram



Lift Handle



Sliding Handle

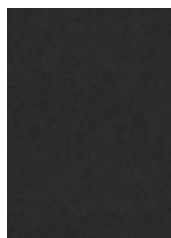


Product Introduction

Narrow-Frame Lift-Sliding Door

- Slim profile design, light transmittance up to 92%
- Injected adhesive + corner crimping process for stronger structure, safety, and sealing
- Lift & slide system: lifts for smooth sliding, locks in any position, drops for secure sealing
- Full-bearing contact, friction-free sliding, smooth and silent operation
- Optional three-track system with stainless steel mesh screen door
- Glass: 5 + 12A + 5 insulated tempered glass

Color Series



Jazz Black

- Supports dual-color design; interior and exterior colors customizable

Opening Sash Specifications

Single panel not exceeding 4.5m²

Fan Width	400-2500MM
Lift Fan Height	1200-2600MM
Height of push-pull fan	1200-3200MM
Load bearing	150KG

Turn on direction

- Two rails, two fans
- Two rails, four fans
- 3-track belt yarn

Interior Sliding Door

Introduction (06/07/16/18)



Product Introduction

Minimalist Sliding Door Concept

- Simplicity over excess – embraces frugality, avoids waste, and returns to nature
- Minimalist expression – slim frame, clean design, and refined configuration
- Modern elegance – strong sense of lines, wide open views, and understated beauty
- A lifestyle attitude – removing unnecessary decoration, pursuing simplicity, and returning to authenticity

Color Series



Jazz Black

Ceramic Coated Champagne

Brushed Brass

Enamel White

Door handle

U-shaped Handle



Straight Handle



Sliding lock

U-shaped Handle Lock (Single-Sided Lock)



Key Lock Box (Double-Sided Lock)



OPAK hardware

Pulley



Buffer



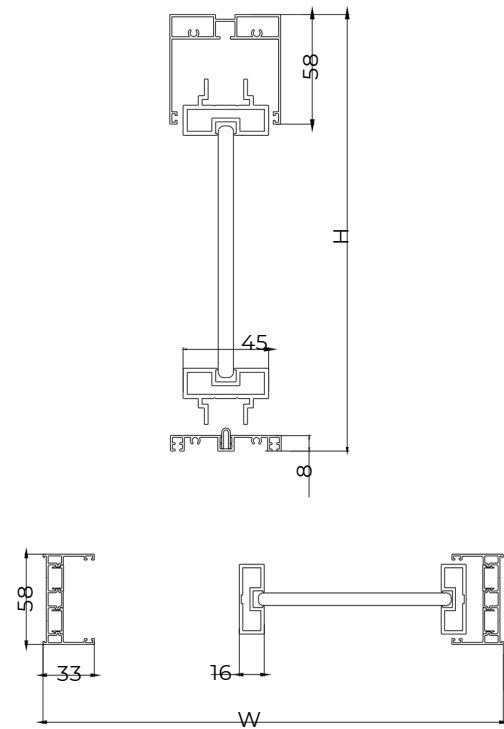
Usage Requirements for the Buffer:

- Sliding door single panel, one-way buffer: minimum panel width 580mm
- Sliding door single panel, two-way buffer: minimum panel width 680mm
- Hanging sliding door single panel, one-way buffer: minimum panel width 520mm
- Hanging sliding door single panel, two-way buffer: minimum panel width 780mm

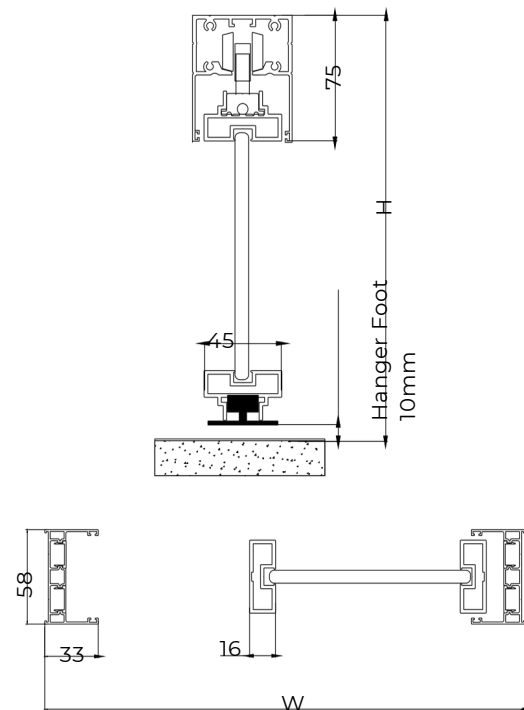
Single Track Series (06/07/16/18)



Single Track Sliding Door Node Diagram



Single Track Hanging Sliding Door Node Diagram



Double Track Series (06/07/16/18)

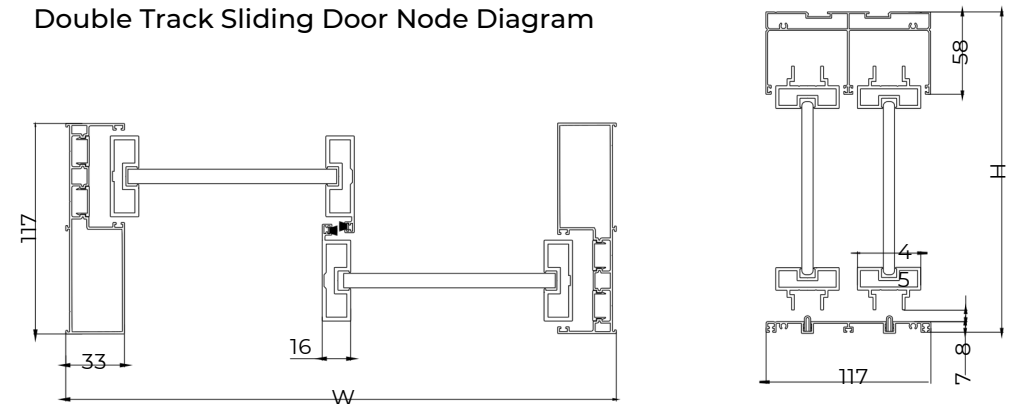


Opening Methods:

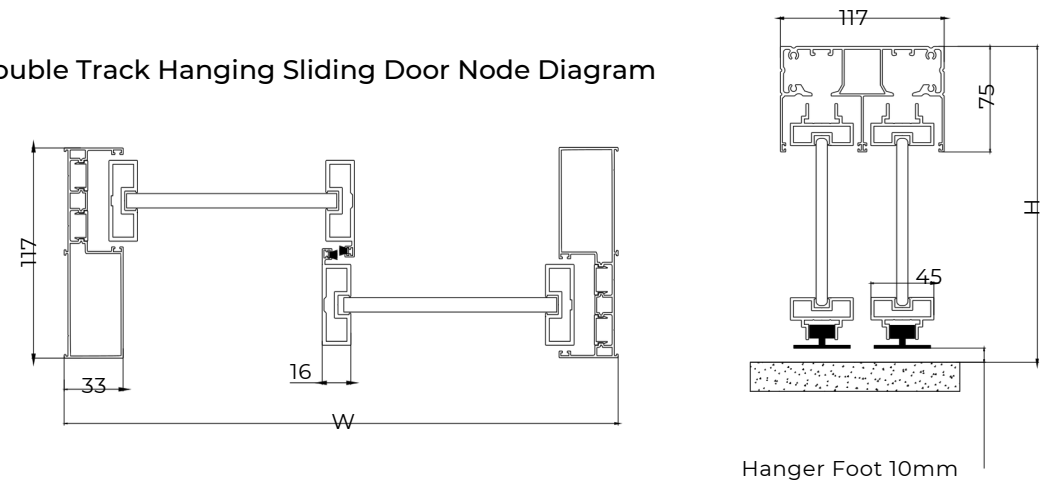
Two tracks, double panels, two tracks, four panels, two tracks, opposite-direction linkage, two-panel linked pocket sliding / hanging sliding



Double Track Sliding Door Node Diagram



Double Track Hanging Sliding Door Node Diagram



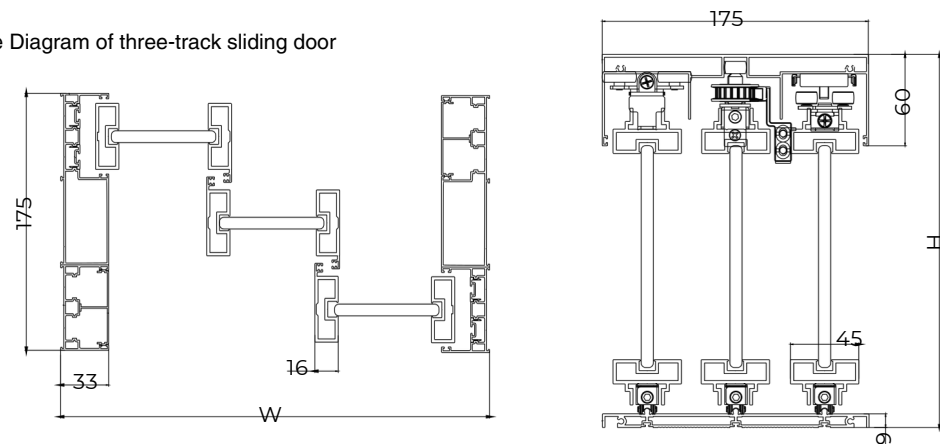
Three Track Series (06/07/16/18)

TRIPLEX series (06/07/16/18)

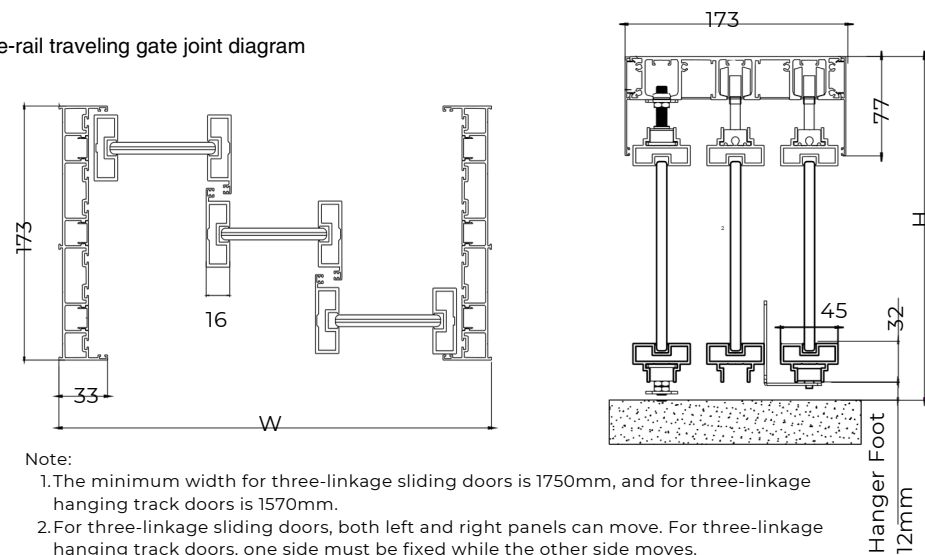
Opening Methods: Three-track sliding / hanging sliding, three-linkage sliding / hanging sliding, three-panel linked pocket sliding / hanging sliding



Node Diagram of three-track sliding door



Three-rail traveling gate joint diagram



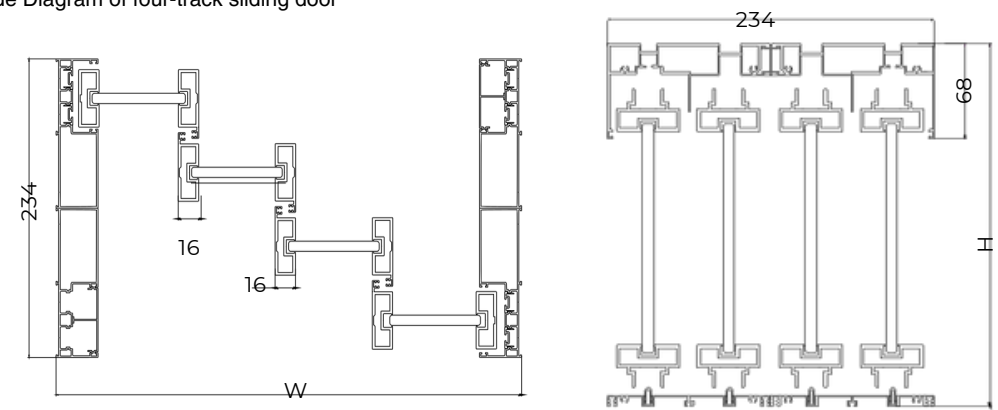
- Note:
- 1.The minimum width for three-linkage sliding doors is 1750mm, and for three-linkage hanging track doors is 1570mm.
 - 2.For three-linkage sliding doors, both left and right panels can move. For three-linkage hanging track doors, one side must be fixed while the other side moves.

Four Track Series (06/07/16/18)

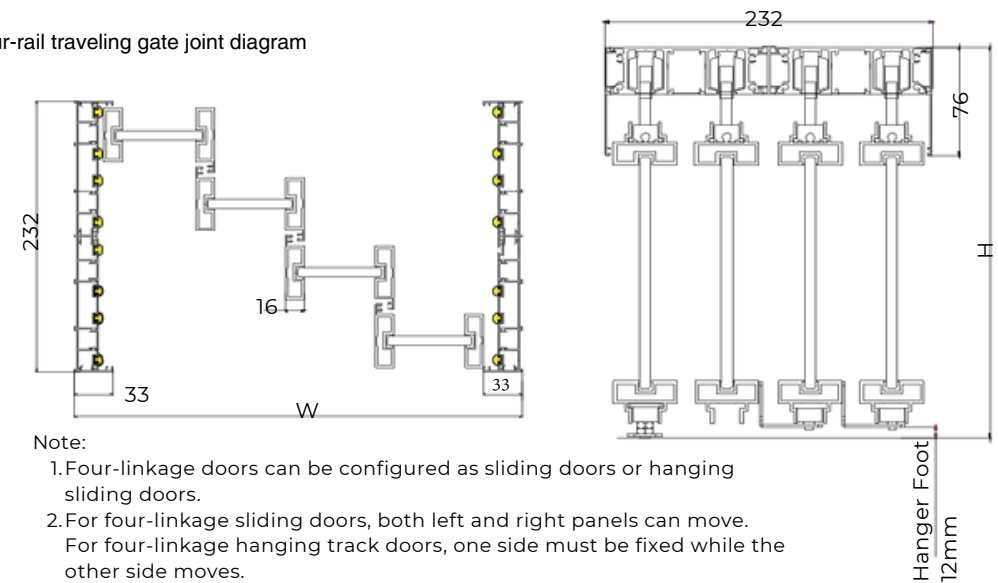
Opening Methods: Four-track sliding / hanging sliding, four-linkage sliding / hanging sliding doors



Node Diagram of four-track sliding door



Four-rail traveling gate joint diagram



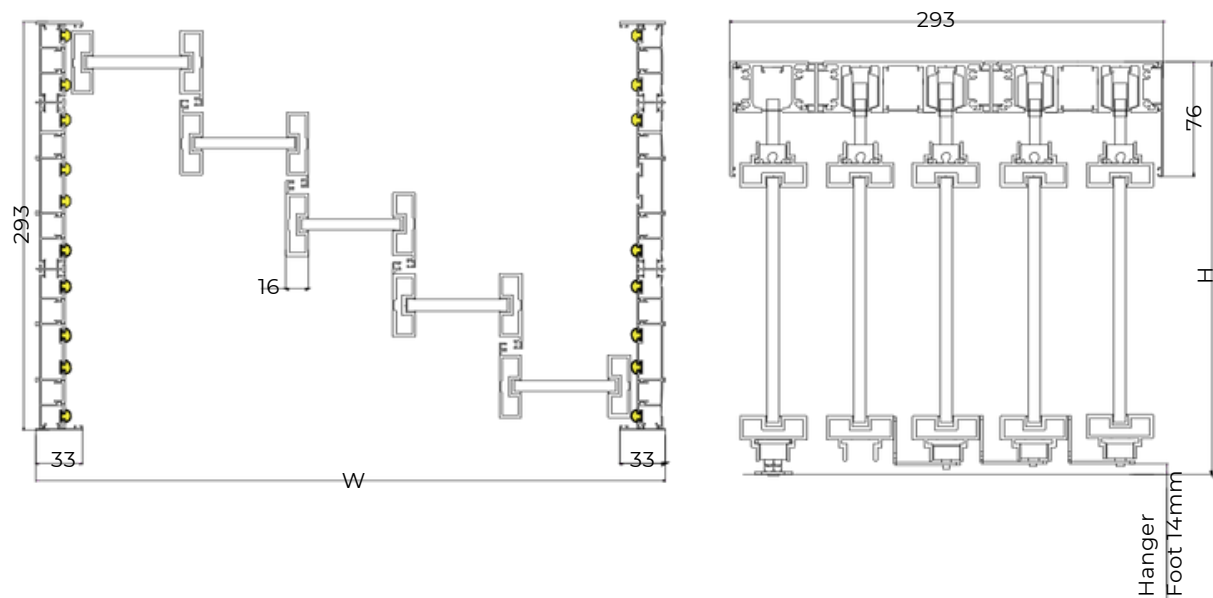
- Note:
- 1.Four-linkage doors can be configured as sliding doors or hanging sliding doors.
 - 2.For four-linkage sliding doors, both left and right panels can move. For four-linkage hanging track doors, one side must be fixed while the other side moves.

Five Track Series (06/07/16/18)

Opening Methods: Five-track sliding / hanging sliding, five-linkage hanging sliding doors



Five-track node diagram

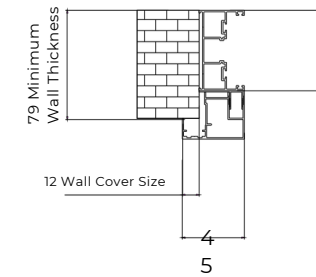


Note: Five-linkage doors can only be made as hanging sliding doors, not as sliding doors. For hanging track doors, one side must be fixed while the other side moves.

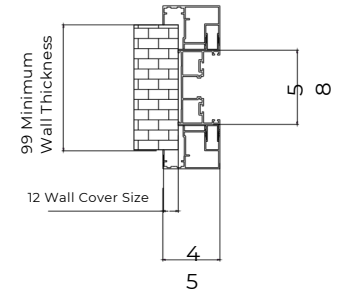
Interior Sliding Door Frame Kit Introduction

Monorail

Single Frame:

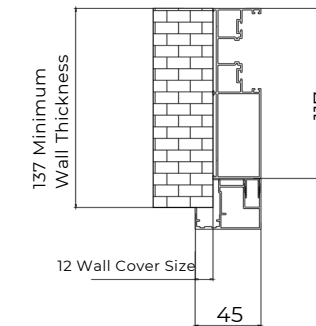


双包:

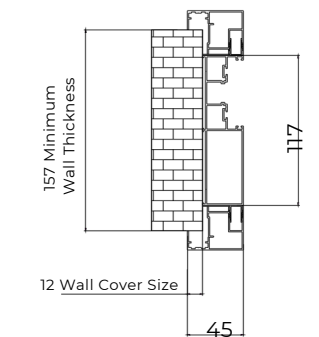


Two tracks

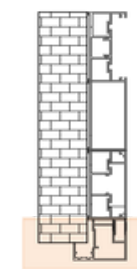
Single Frame:



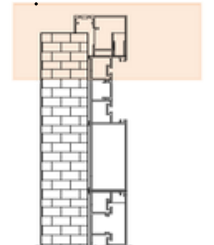
双包:



single trim



double trim



Three-track

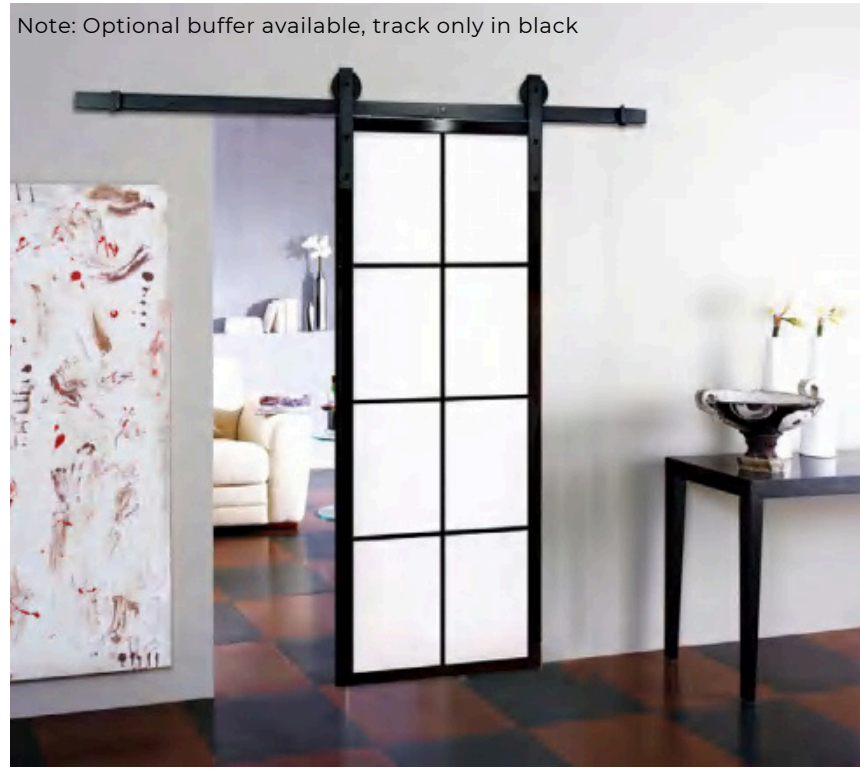
Note: There is also a 65mm trim with 32mm wall cover, available only in black stock.

Interior Sliding Door Frame Kit Technical Parameters

Single packet minimum	Track Width +20mm
Double packet minimum	Track Width +40mm
Visual dimension	45MM
Wall dimensions	12MM

Barn Door (06/07/16/18)

Note: Optional buffer available, track only in black



Style of interior door glass

(Interior Narrow Frame System)

Colored Glass



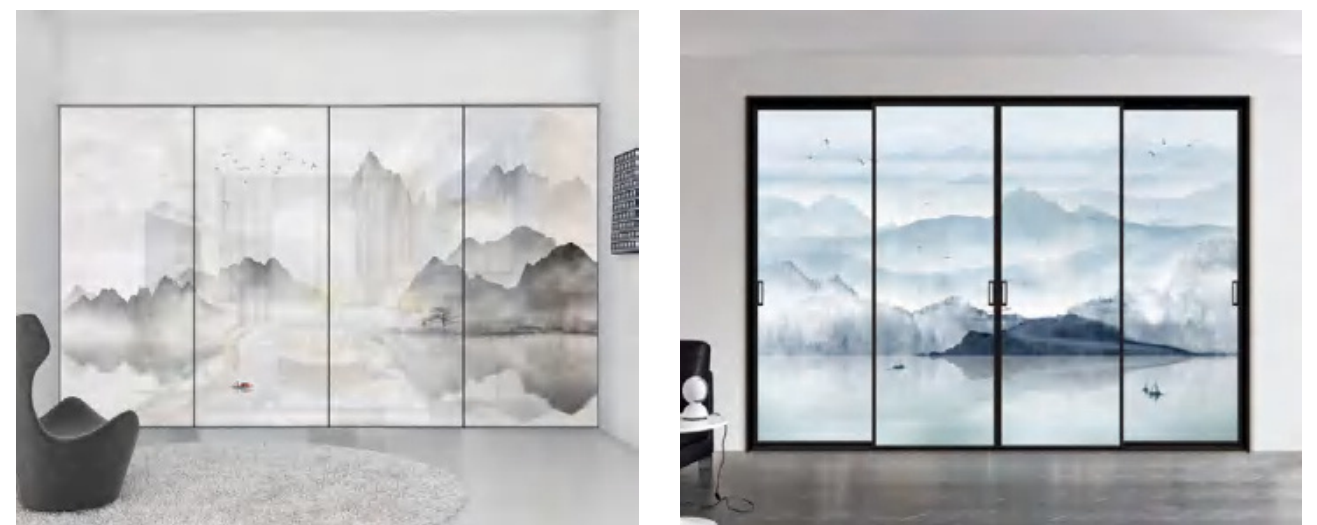
Landscape Painting



90° Open Door (06/07/16/18)



Landscape Painting



Interior Casement Door Introduction (06/07/16/18)

Note: Casement doors use concealed floor-to-ceiling hinges, offering good load-bearing performance and a sleek appearance.



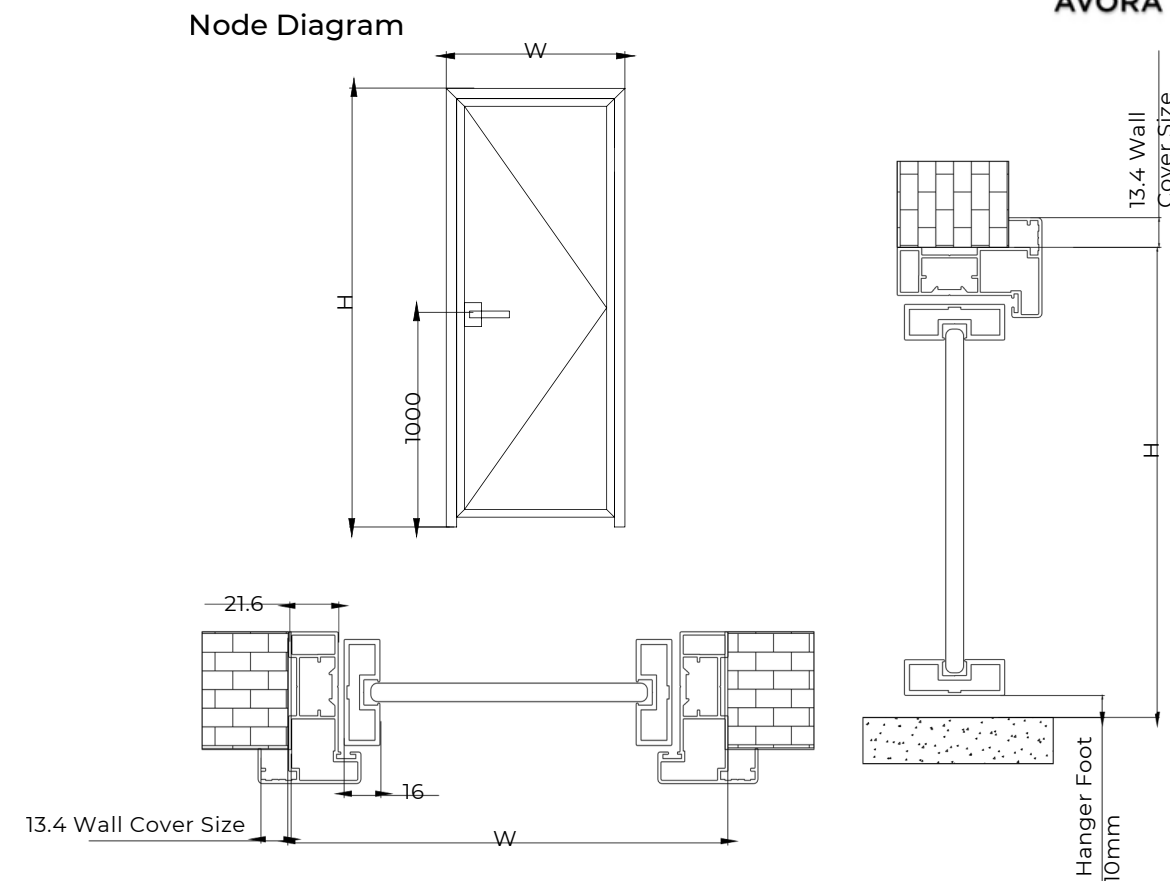
Main Frame: 35mm
Secondary Frame: 45mm

Color Series

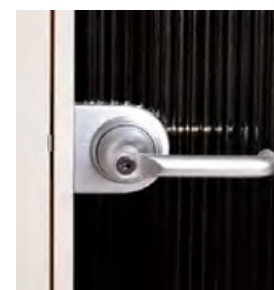


black champagne brass brushed white

- 06/07/16/18 Series Stock Colors



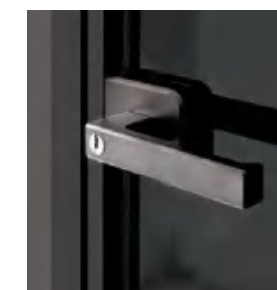
Door lock



Mechanical Lock



07 Dedicated Mechanical Lock



Standard Magnetic Lock



Fingerprint Lock

Product Introduction

Single Frame:

- Inner opening
- outside opening
- External opening
- Out sourcing

Double Frame:

- Inner opening
- Out sourcing

Note: Casement doors use concealed floor-to-ceiling hinges, offering strong load-bearing capacity and a sleek appearance.

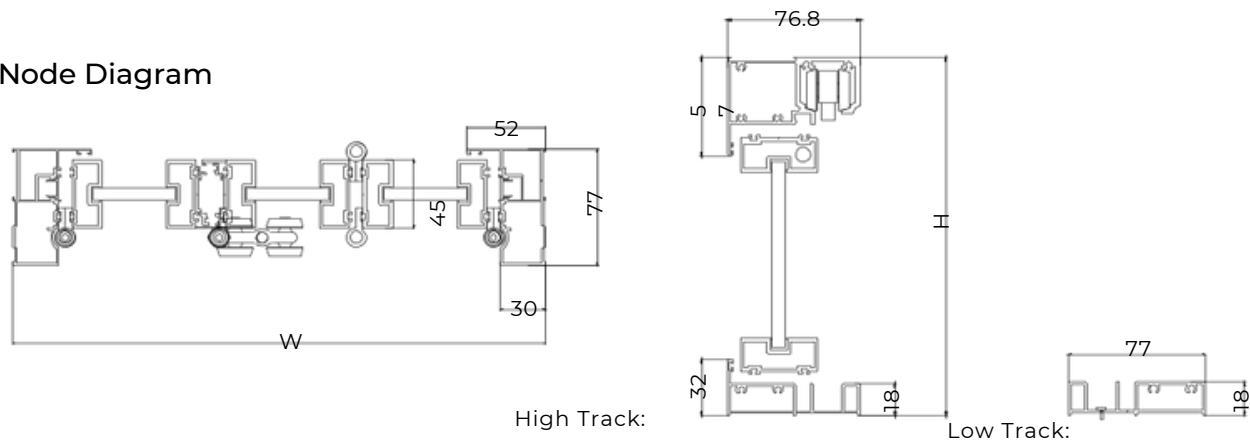
Interior Casement Door Frame Kit Technical Parameters

Single packet minimum	50MM	
Double packet minimum	100MM	
Visual dimension	Main Frame: 35mm	Secondary Frame: 45mm
Wall dimensions	13MM	

Interior 20 Folding Door



Node Diagram



Color Series



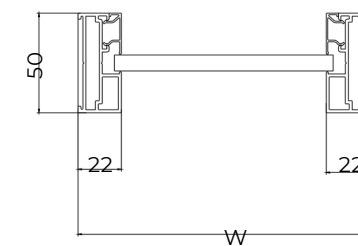
Jazz Black

- Narrow-frame folding doors are only available in Jazz Black stock.
- Any number of panels can be made, and an additional casement door can be added for odd-numbered panels.

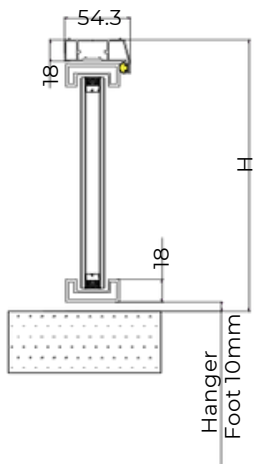
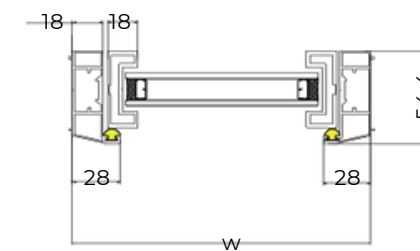
Partition Casement Door



Fixed node diagram



Partition level door node diagram



Color Series



Jazz Black

- Narrow-frame partitions are only available in Jazz Black stock.
- Partition casement doors have no frame trim but can be made as frameless casement doors.