



PREFAB STEEL TINY HOUSE



AVORA DOORS



AVORA DOORS

CONTENTS

1/	OUR STORY	13-14/	S-DESIGN STYLE
2/	TINY HOUSE	15-16/	A-DESIGN STYLE
3/	WHY IS IT ?	17-18/	STUDIO STYLE
4/	FCS ADVANTAGE	19/	PRODUCT SPECIFICATIONS
5/	PREFABRICATED SYSTEMS	20/	INSTALLATION PROCESS
6/	TINY HOUSE ADVANTAGE	21/	INTERIOR DECORATION
7-8/	C-DESIGN STYLE	22/	EXTERIOR DECORATION
9-10/	S-DESIGN STYLE	23 - 26/	STRUCTURE DIAGRAM
11-12/	T-DESIGN STYLE	27 - 30/	PROJECT COOPERATION



AVORA DOORS

WHY CHOOSE AVORA DOORS

A style and design that makes a statement

We provide tailored services to create doors and windows of the highest technical quality that surpass each clients unique specifications . Our team of designers and engineers will be available to you throughout the entire construction process from design to installation and after service .



TINY HOUSES



LIFE SIMPLIFICATION



ENCIRONMENTAL CONSCIOUSNESS



SOUND FISCAL PLANS



SELF SUFFICIENCY



LIFE ADVENTURES

START _____

Experience tiny house living in a sustainable, low-impact home!

SIMPLE LIFE

PREFAB TINY HOUSE

- The term "tiny house" is sometimes used interchangeably with "micro-house".
- Tiny homes may be rented or owned. You may choose a mini home on wheels or your small home may set on a foundation. Most tiny houses are independent structures—some are parked on land with other buildings or a larger home. Other tiny houses are parked on their own lot. Some tiny houses are designed and built by the owner themselves, while others are purchased, adapted from trailers, or built from a tiny house kit. Tiny houses come in all shapes, sizes, and forms, but they all enable simpler living in a smaller, more efficient space.





What is CSF?

- Cold Formed Steel (also known as **CFS**, Light Gauge Steel & LGS), is one of the most sustainable materials used in modern buildings and is increasingly popular due to environmental factors as well as cost and efficiency. It can be seen in common household appliances & buildings all over the world. Its composition, properties and uses are essential to understanding its benefits in the construction industry.



AVORA DOORS

SPEED OF CONSTRUCTION



Construction is quick and simple with the FRAMECAD accurate steel frame system components.

SAVE LABOR COST



Can greatly reduce the total cost of the project, simplify construction at the same time, improve the safety of the building.

VERSATILITY OF



Steel's inherent strength enables architectural and design flexibility – allowing long spans and curves to be easily incorporated into functional designs.

FASTER RETURN OF INVESTMENT



This means high quality results anywhere, using low-cost, low-skilled labour and shorter timeframes.

ECO-FRIENDLY MATERIAL



Thanks to exceptional resistance to fire, corrosion and pests, steel framed buildings are the first choice for extreme environmental conditions.

OFF SITE CONSTRUCTION



The structural integrity of steel frame houses has demonstrated in full-scale simulations that it stays straight, true and most importantly, safe.

CSF
Building Structure





FEATURE SELLING POINT:

- Front large floor-to-ceiling glass windows + interior loft.

AVORA DOORS TINY KITS CAN INCLUDE:

- Pre-assembled Steel Framing.
(can include exterior & interior walls, roof trusses, floor joists, + more)
- Assembly Hardware + Fasteners.

PREFABRICATED SYSTEMS

- The highly accurate and accelerated production of the FRAMECAD system means that walls, trusses and joists can be prefabricated off site at rapid speed.
- The streamlined FRAMECAD roll forming equipment takes up minimal space and allows for easy assembly. Gain a greater degree of quality control in a factory environment compared to on-site construction.
- The efficient and accurate nature of prefabrication allows projects to be produced accurately to design and specification.

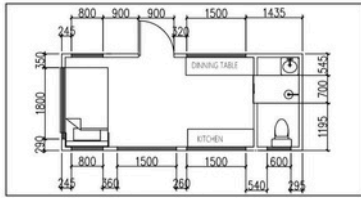




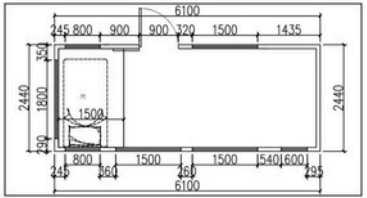
AVORA DOORS

C - DESIGN

FLOOR PLAN

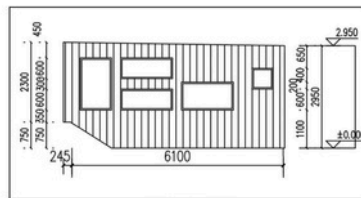


GROUND FLOOR PLAN

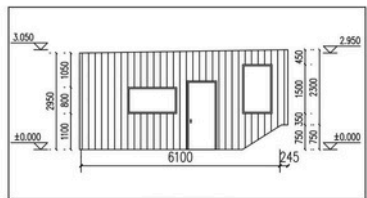


ROOF PLAN

ELEVATION



FRONT VIEW



REAR VIEW

SCENE DIAGRAM



TOWNSEND TRADITIONAL



1 bed



1 bath



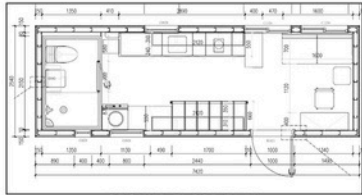
160 ft²



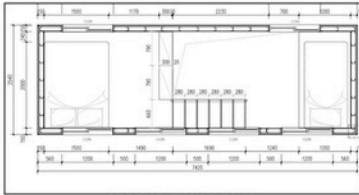
AVORA DOORS

S - DESIGN

FLOOR PLAN

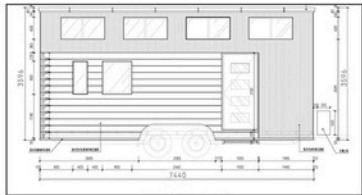


GROUND FLOOR PLAN

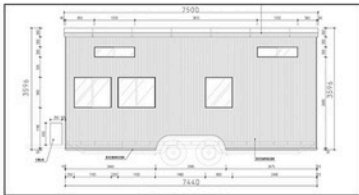


SECOND FLOOR PLAN

ELEVATION



FRONT VIEW



REAR VIEW

SCENE DIAGRAM



TOWNSEND TRADITIONAL



1 bed



1 bath



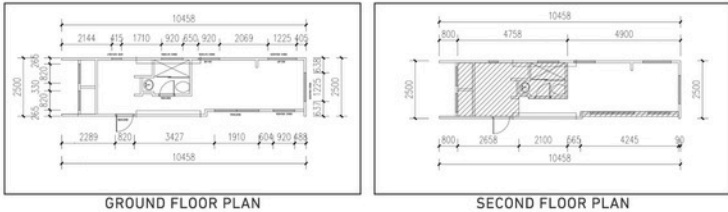
196 ft²



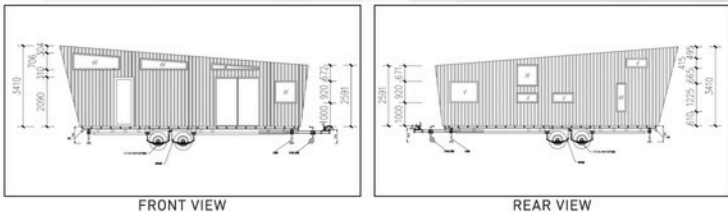
AVORA DOORS

W - DESIGN

FLOOR PLAN



ELEVATION



SCENE DIAGRAM



TOWNSEND TRADITIONAL



2 bed



1 bath



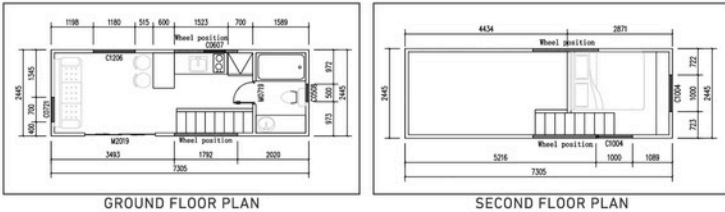
272 ft²



AVORA DOORS

A - DESIGN

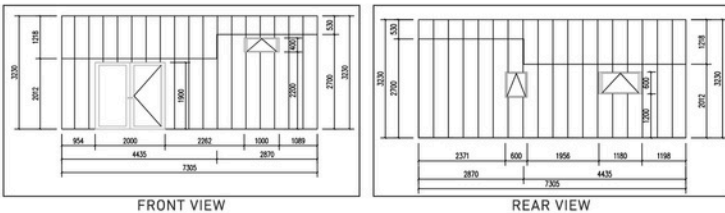
FLOOR PLAN



GROUND FLOOR PLAN

SECOND FLOOR PLAN

ELEVATION



FRONT VIEW

REAR VIEW

SCENE DIAGRAM



TOWNSEND TRADITIONAL



1 bed



1 bath



196 ft²



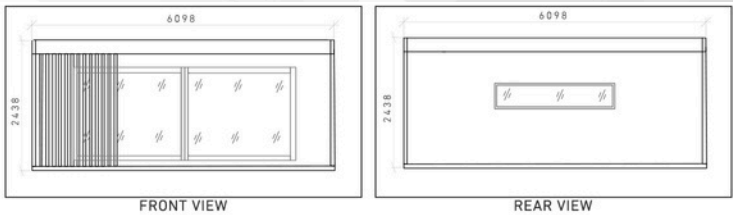
AVORA DOORS

STUDIO

FLOOR PLAN



ELEVATION



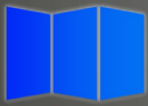
SCENE DIAGRAM



TOWNSEND TRADITIONAL



160 ft²



AVORA DOORS

ABOUT PRODUCT SPECIFICATIONS

By shipping our houses as preassembled kits we utilize the benefits of online purchasing power and fulfillment while avoiding the challenges of offsite construction.

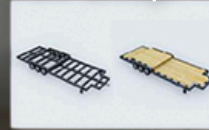
You can assemble the home yourself...or hire a contractor. No home-building experience is needed.

Either way, we reduce labor costs due to a combination of carefully selected building materials combined with the precision of the lightweight steel framing system.

We supply engineered, factory assembled wall and roof panels that are easy to erect so you can have a habitable home in less than 60 days.

Our material-lead-designs and master materials list ensures there is minimal uncertainty throughout the framing process.

1st Step



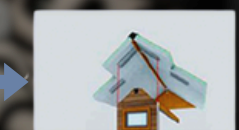
2nd Step



3rd Step



4th Step



Final Step



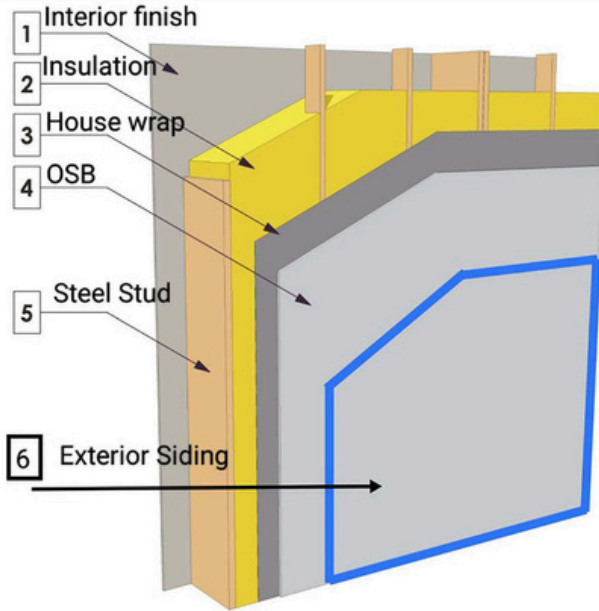


AVORA DOORS

PRODUCT DISPLAY INSIDE THE BOX



STRUCTURE DIAGRAM



1. Interior finish



2. Insulation



3. House wrap



4. OSB



5. Steel stud



6 Exterior siding

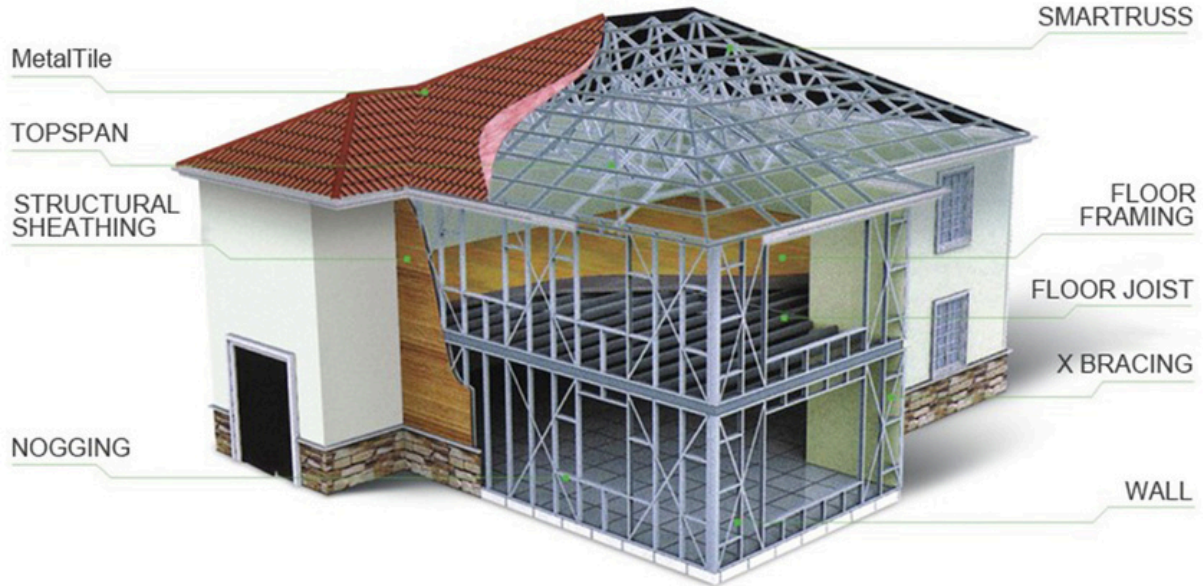




AVORA DOORS

STRUCTURE DIAGRAM

Any size, any layout, we can tailor light gauge steel house especially for you!





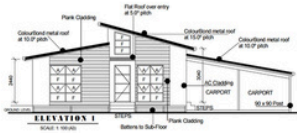
AVORA DOORS

PROJECT COOPERATION

10 LOWTHER STREET, RUSSELL ISLAND, QLD 4184



FLOOR PLAN



7 KENTWELL RD, ALLAMBIE HEIGHTS, SYDNEY



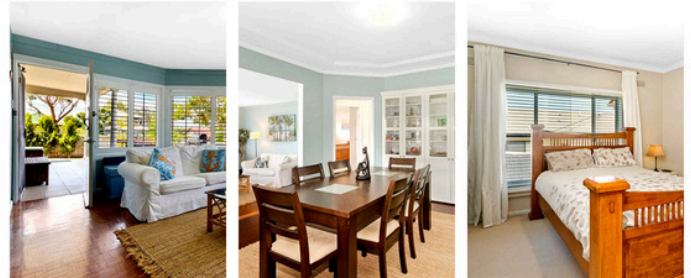
FLOOR PLAN



PROJECT SCENE



PROJECT SCENE





AVORA DOORS

PROJECT COOPERATION

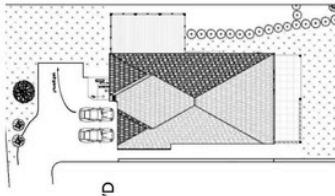
7B BEECROFT RD PENNANT HILLS, SYDNEY



21&7 PLANTATION PLACE, MACKENZIE, QLD 4156



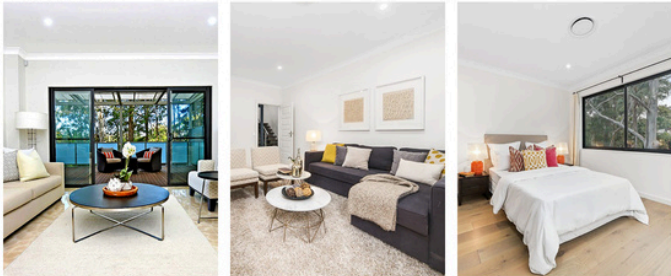
FLOOR PLAN



FLOOR PLAN

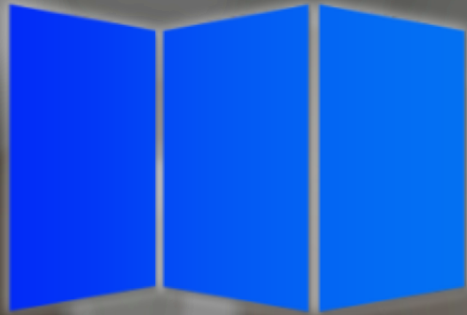


PROJECT SCENE



PROJECT SCENE





AVORA DOORS

Contact Us



Phone:
+1 512-522-2284



Email:
info@avoradoors.com



Website:
www.AvaraDoors.com



Address:
Texas Facility 1309 Ave H Grand
Prairie, TX 75050