

AVORA DOORS

# ***WINDPROOF ROLLER BLINDS***

**Contact Number:** +1 512-522-2284  
**Email:** [info@avoradoors.com](mailto:info@avoradoors.com)  
**Website:** [www.AvoraDoors.com](http://www.AvoraDoors.com)  
**Address:** Texas Facility  
1309 Ave H Grand Prairie, TX 75050



# ***TABLE OF CONTENTS***



AVORA DOORS

1

APPLICATION OF WINDPROOF ROLLER BLINDS

2

WINDPROOF ROLLER BLINDS SOLUTIONS & CORE TECHNOLOGIES

3

WINDPROOF ROLLER BLINDS FABRIC





AVORA DOORS

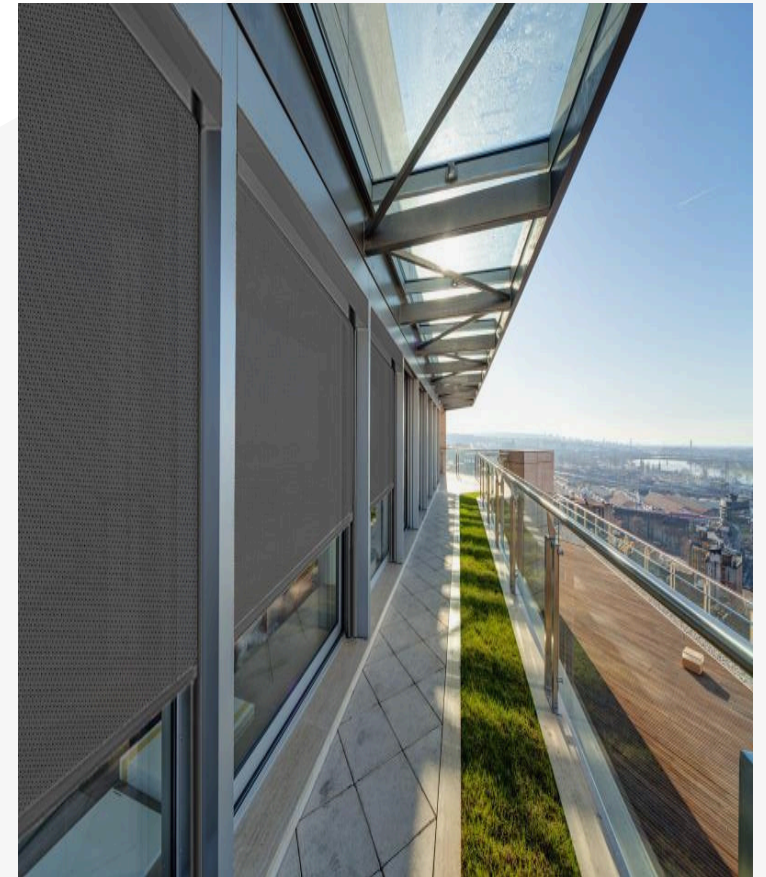
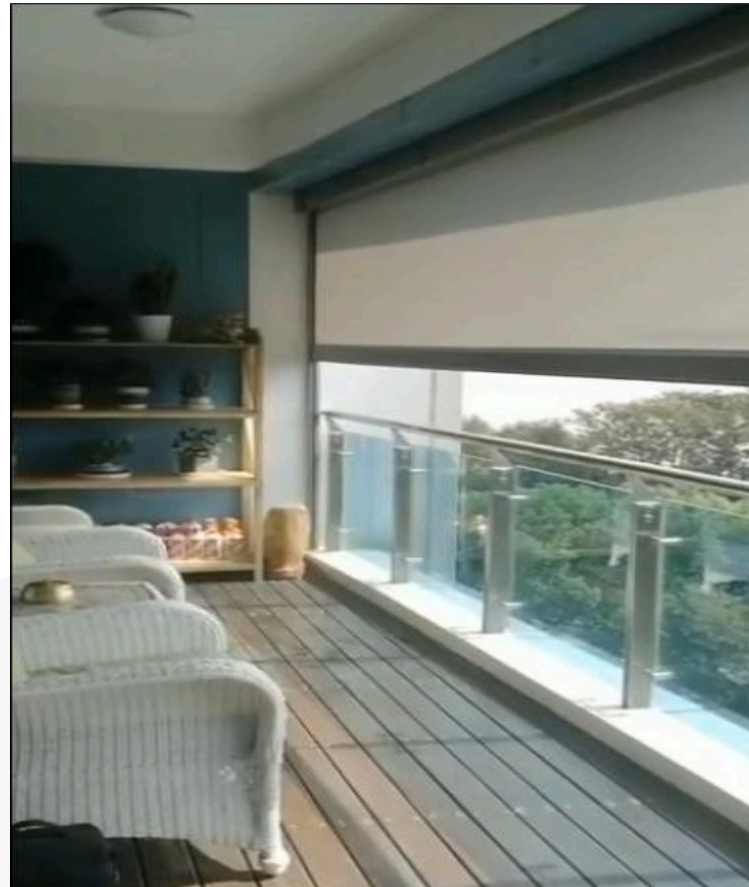
01 >

APPLICATION OF WINDPROOF ROLLER BLINDS





Windproof roller blind have been widely used in villas, sun rooms, restaurants, balconies, hotels, Shinkansen, luxury buses, various sports venues, office buildings, conference rooms, precision equipment factories, dust-free factories, modern homes and other places



Balcony & Outdoor Shading

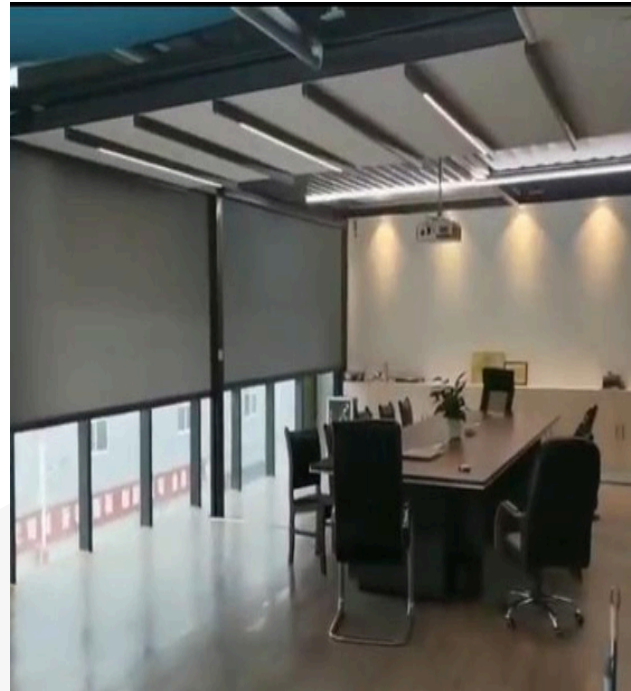
# APPLICATION OF WINDPROOF ROLLER BLINDS



AVORA DOORS



Public Office Lobby



Meeting Room



Indoor Swimming Leisure Center

# APPLICATION OF WINDPROOF ROLLER BLINDS



AVORA DOORS



Outdoor Application Scenarios



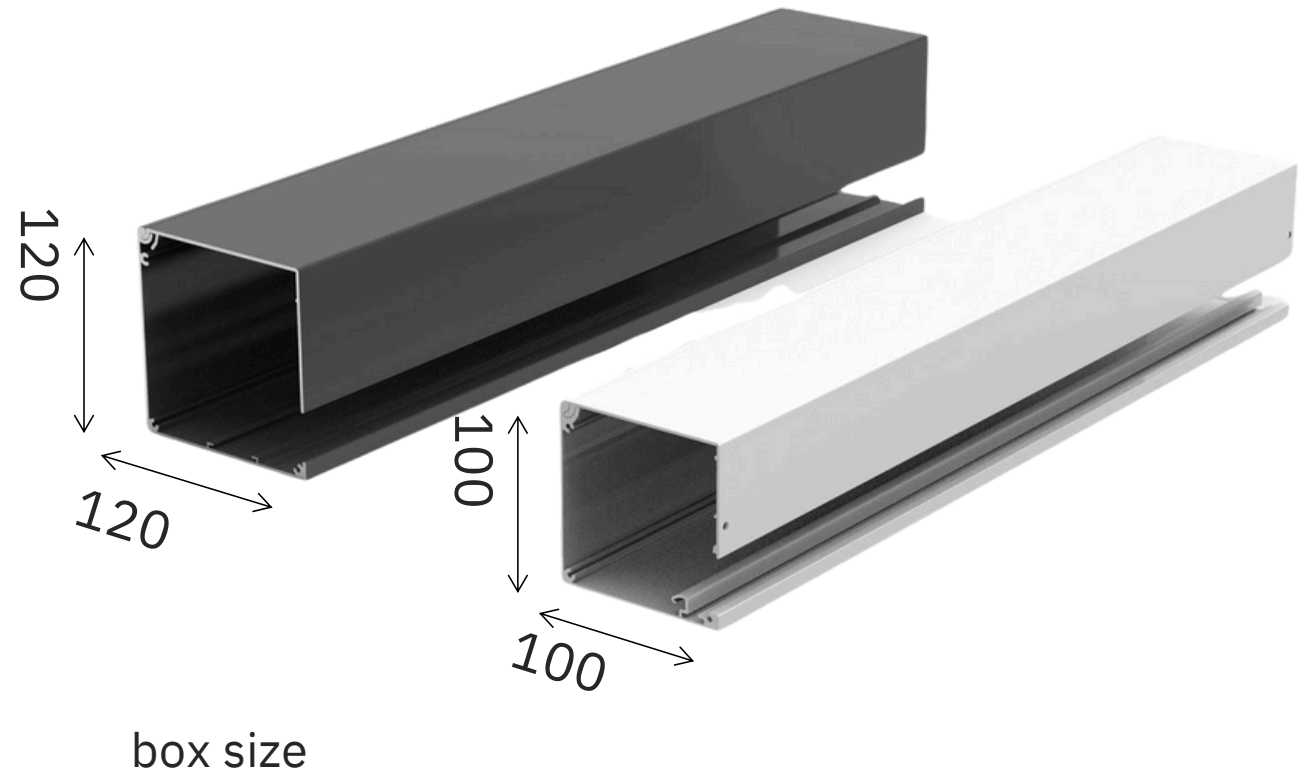
AVORA DOORS

02 >

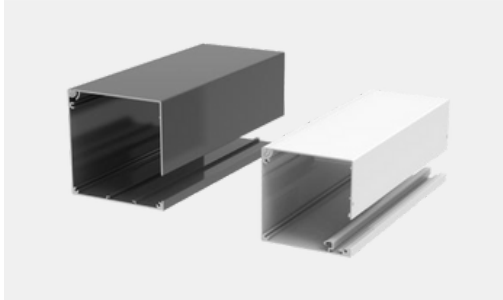
WINDPROOF ROLLER BLINDS SOLUTIONS & CORE TECHNOLOGIES



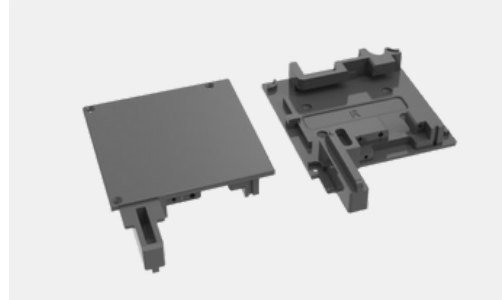
120\*120 upper box is mainly used for outdoor , 100\*100 upper box is mainly used for indoor



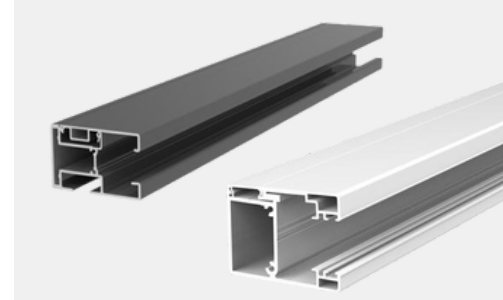
## Aluminum accessories details



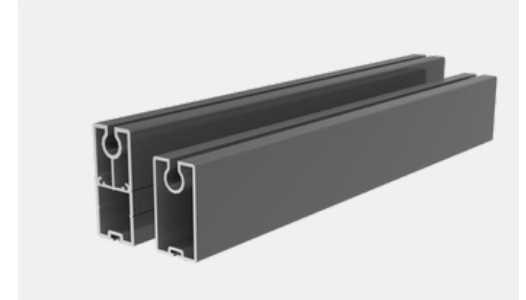
Name: Box  
Size: 120\*120/100\*100  
Thickness: 2mm  
Material: 6063-T5



Name: WR120 side cover  
Size: 120\*120  
Thickness: 2mm  
Material: Alu.



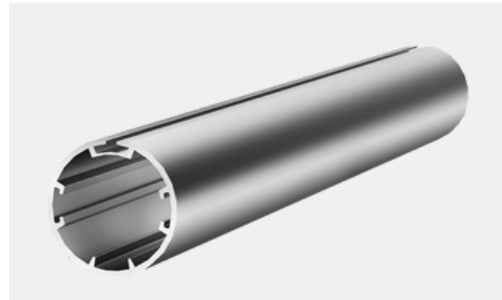
Name: Side frame  
Thickness: 2mm  
Material: 6063-T5



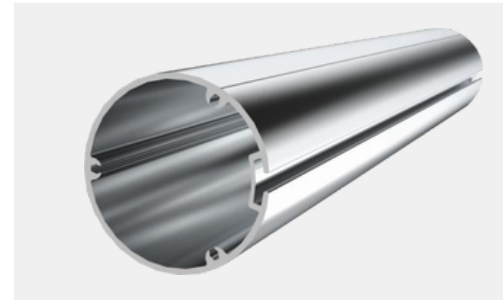
Name: Bottom frame  
Thickness: 2mm  
Material: 6063-T5



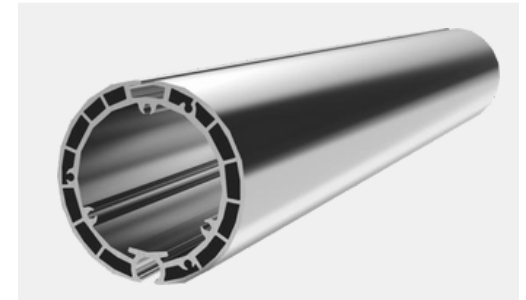
Name: Zipper rail  
Material: PVC



Name: 55 Roller tube  
Size:  $\Phi 55$   
Material: 6063-T5



Name: 63 Roller tube  
Size:  $\Phi 63$   
Thickness: 2.5mm  
Material: 6063-T5



Name: 78 Roller tube  
Size:  $\Phi 78$   
Material: 6063-T5

## Roller blind smart balancer

**Structural features: roller blind fabric zipper protection safety is the most important**

**The use of double-groove bearings and ball bearings, adjustable rail-type slides; the back wheel adaptively adjusts the position of the fabric according to how much the fabric is wound, and protects the zipper in the whole process.**



Strong Wind  
Resistance



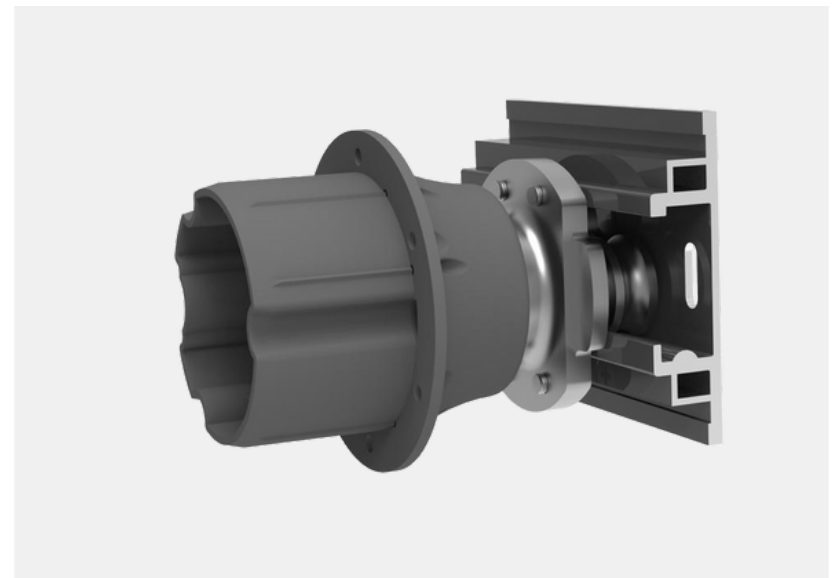
Sun  
Protection



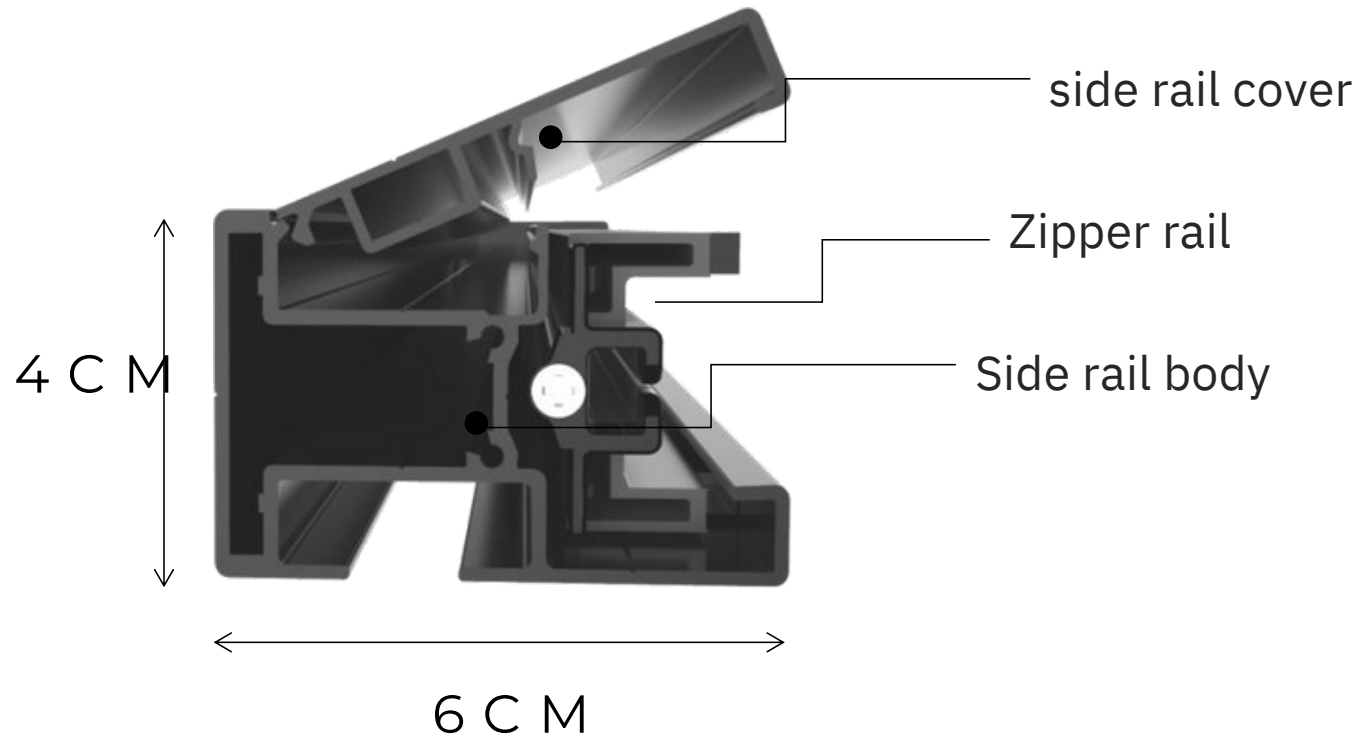
Thermal  
Insulation



Temperature  
Control



### Structure drawing of side rail



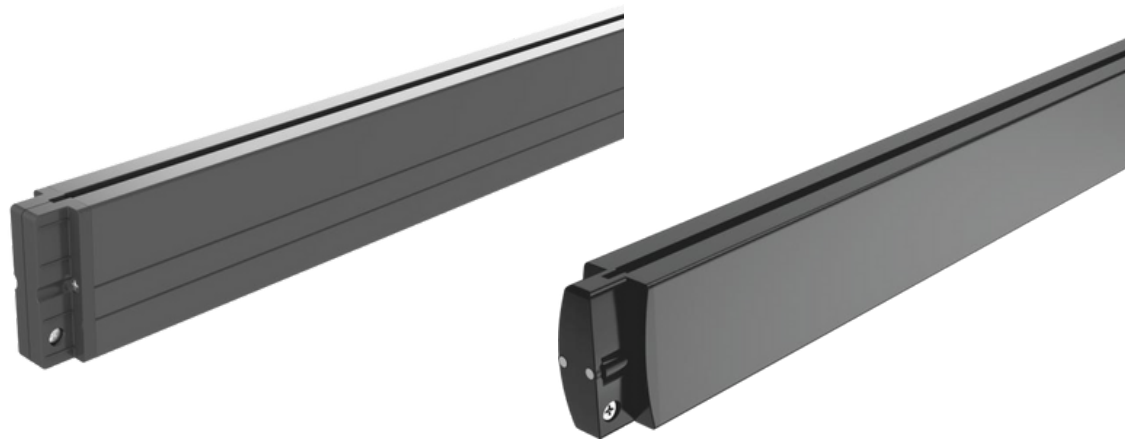
Snap-in type screwless side rail system for easy installation and maintenance

### Side rail zipper guide rail structure diagram



Roller blind can be used normally under high temperature, low cold and high wind pressure, which is convenient and practical

Double-layer zipper guide rail/soft rubber integrated zipper guide rail



Heavy bottom beam

Light bottom beam

- ✦ Ultra-thick wall and thick bottom rail per meter, fixed by screws, firmer and more accurate
- ✦ Three-way design of the bottom rail to improve the bending resistance of the bottom rail
- ✦ Fixed counterweight, up to 3KG per meter
- ✦ Choose to equip with sealing strips and felt strips



Indoor zipper



Outdoor zipper

Special hot-melt adhesive zippers and glue-free zippers ensure the special application of indoor and outdoor windproof roller blinds, tighter welding, and longer use

## Electric system

- ✦ Smart balancer core patented technology
- ✦ Special hot melt adhesive zipper and no cross zipper
- ✦ The shape adopts a classic square structure



Strong Wind Resistance



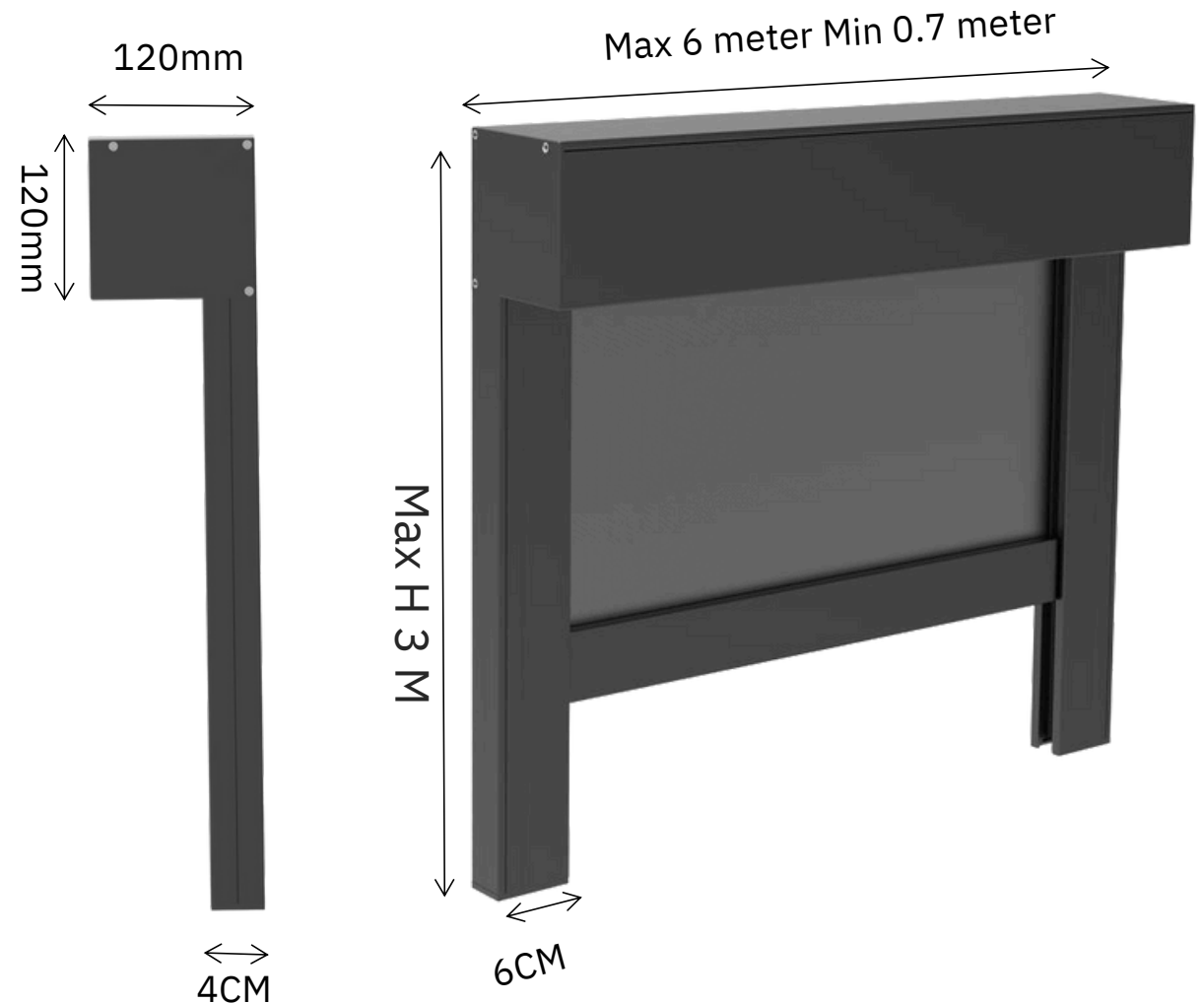
Sun Protection



Thermal Insulation



Temperature Control



## Electric system

Structural features: The unique structure of the motor balancer, end balancer, fixer, etc.; chute type positioning design, automatically adjusts the center position of the roller blind, so that the zipper always enters the zipper guide rail vertically, careful care of the zipper, adjustable chute design, It is convenient to adjust the balance at both ends to reduce the difficulty of installation; multi-bearing system, low damping operation; high versatility of system components, can match: Somfy, Aoke, Duya and other well-known domestic and foreign brand motor systems.



## Manual spring system

- ✦ Smart balancer core patented technology
- ✦ Special hot melt adhesive zipper and no cross zipper
- ✦ The shape adopts a classic square structure



Strong Wind Resistance



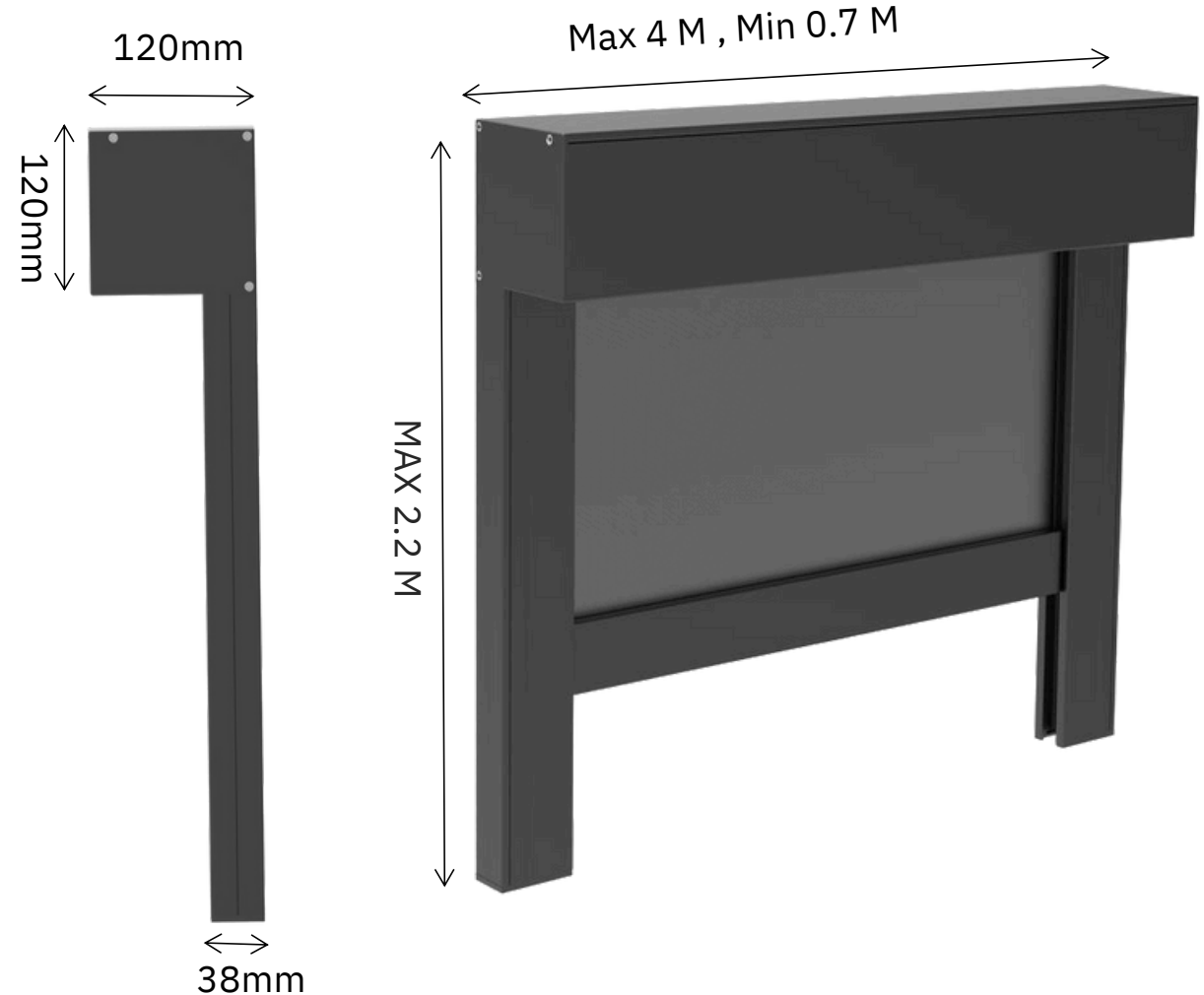
Sun Protection



Thermal Insulation



Temperature Control



## Manual spring system

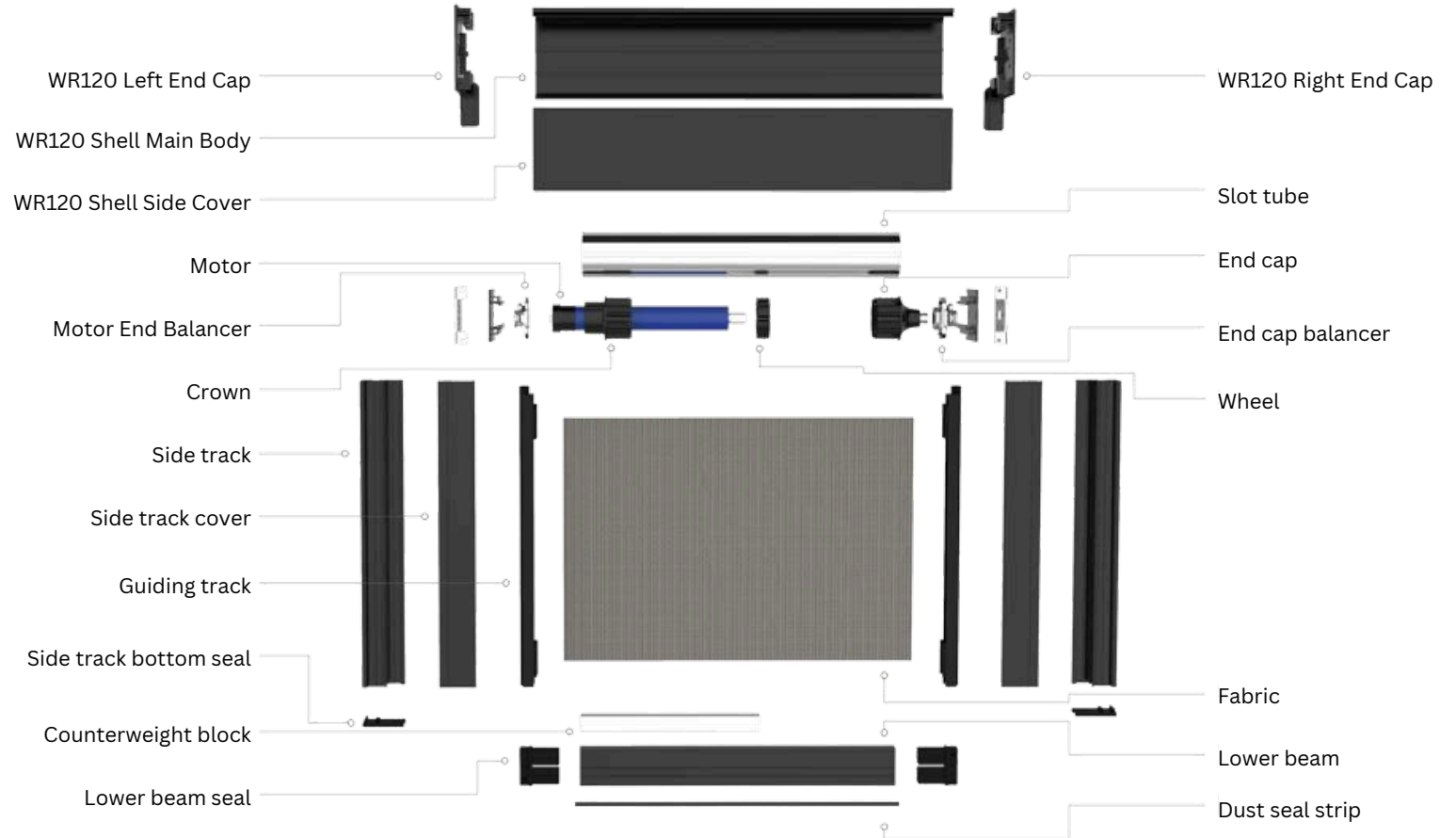
### **Structural features:**

**With a spring system adjusted by the damping device, the same spring system, hand-push windproof roller blinds of various specifications.**

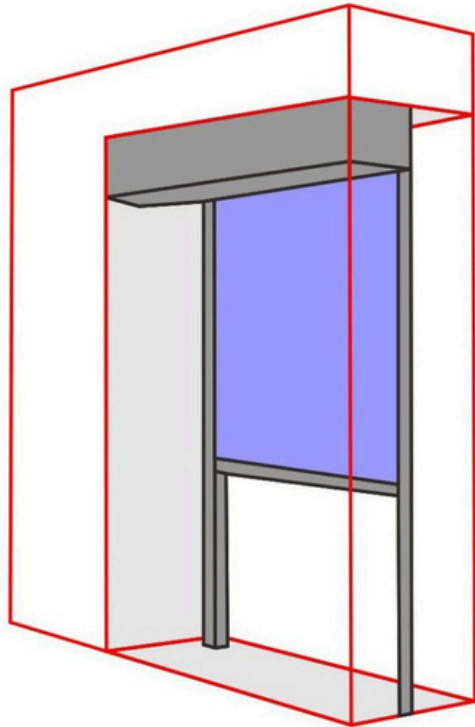


## WR120 System

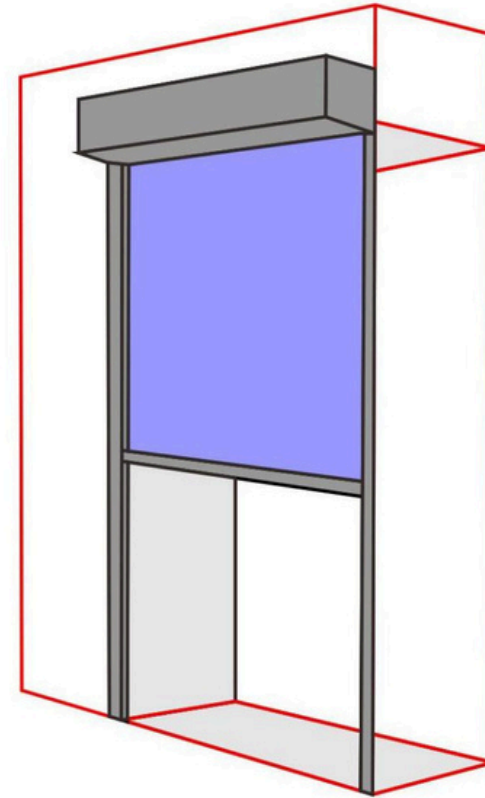
- ✦ Smart balancer core patented technology
- ✦ Special hot melt adhesive zipper and no cross zipper
- ✦ Super-strength thick aluminum
- ✦ The unique lower beam reduces friction, reduces noise, and increases freedom



# Installation method:



INTERIOR FRAME INSTALLATION



EXTERIOR FRAME INSTALLATION



AVORA DOORS

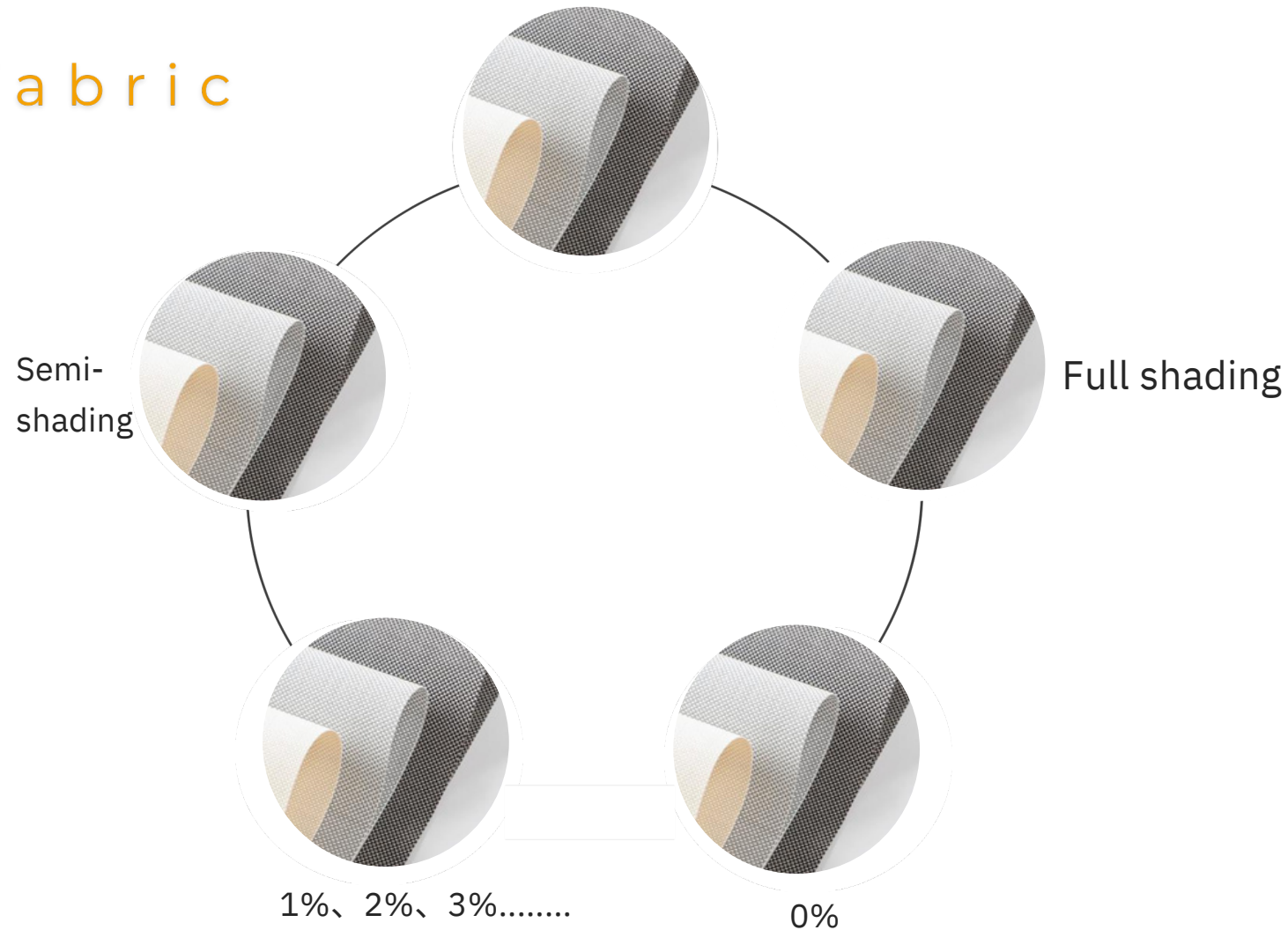
03 >

WINDPROOF ROLLER BLINDS FABRIC



## Flame retardant fabric

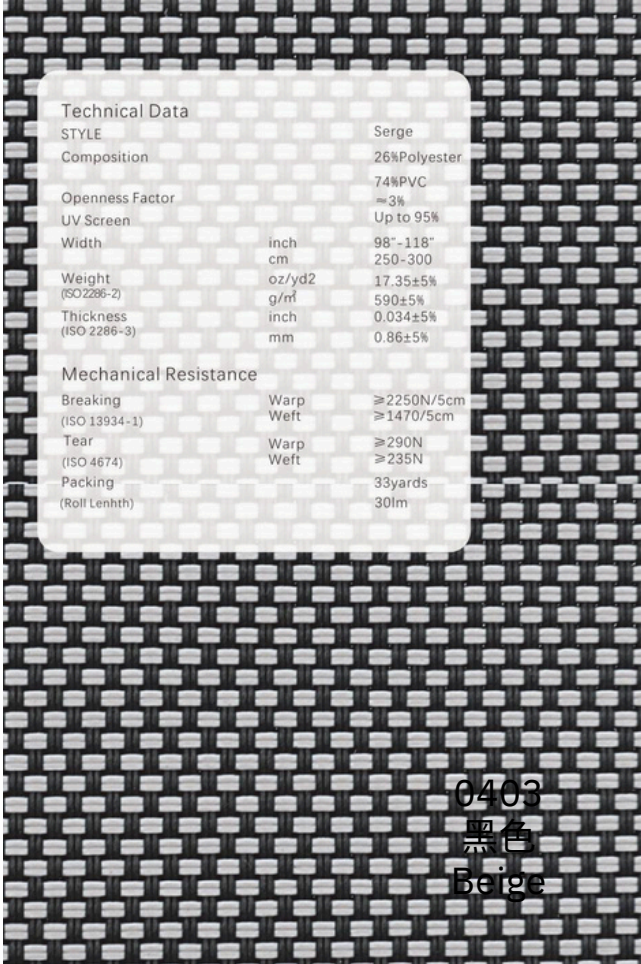
Passed the Australian AS1530-2 and AS1530-3 flame retardant test, the US NFPA 701: 2015 flame retardant test, the California flame retardant test, the German B1 flame retardant test, and the highest flame retardant level French M1 test, and passed the Level B1 Tested by the National Fire Equipment Quality Supervision and Inspection Center



# WINDPROOF ROLLER BLINDS FABRIC

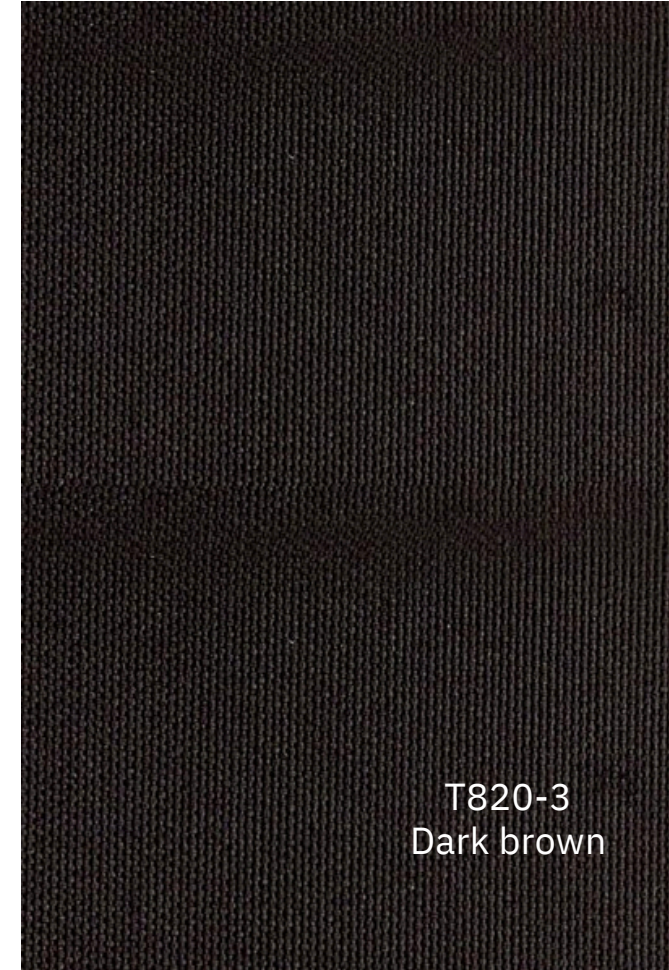
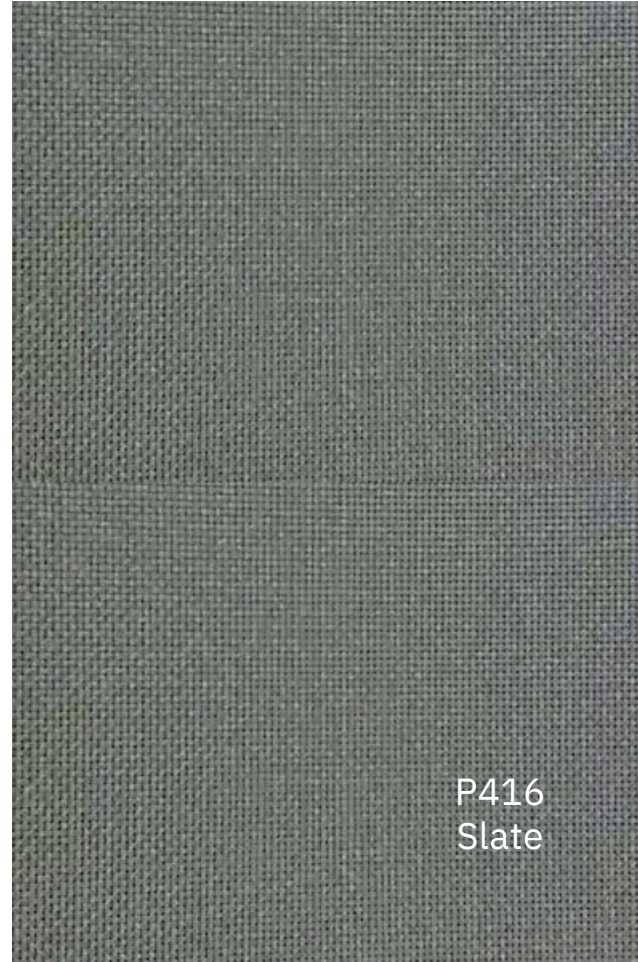


AVORA DOORS



Technical Data		
STYLE		Serge
Composition		26%Polyester 74%PVC
Openness Factor		≈3%
UV Screen		Up to 95%
Width	inch cm	98"-118" 250-300
Weight (ISO 2286-2)	oz/yd2 g/m2	17.35±5% 590±5%
Thickness (ISO 2286-3)	inch mm	0.034±5% 0.86±5%
Mechanical Resistance		
Breaking (ISO 13934-1)	Warp	≥2250N/5cm
	Weft	≥1470/5cm
Tear (ISO 4674)	Warp	≥290N
	Weft	≥235N
Packing (Roll Lenhth)		33yards
		30lm

0403  
黑色  
Beige



# WINDPROOF ROLLER BLINDS FABRIC



AVORA DOORS

